

Education Transport Policy 2026-29
School Admission Arrangements 2026-27
School Admissions Relevant Area 2027-29

Report of the Deputy Director - Head of Inclusion and Learning

Please note that the following recommendations are subject to consideration and determination by the Cabinet (and confirmation under the provisions of the Council's Constitution) before taking effect.

1) Recommendation

That the Cabinet be asked to:

- (a) approve the Education Transport Policy 2026-29;
- (b) approve the Post-16 Education Transport Policy 2026-29;
- (c) approve the normal round co-ordinated admissions scheme 2026-27;
- (d) approve the in-year co-ordinated admissions scheme 2026-27;
- (e) approve the school admissions policies for individual community and voluntary controlled schools 2026-27 including planned admissions numbers;
- (f) approve the relevant areas for school admissions consultations for Devon schools 2027-29;
- (g) approve the admission timetable for the year ahead, at Appendix E.

2) Background

- 2.1 The Council in its role as Education Authority, has a statutory duty to support access to education for children and young people. This includes making provision for school and college transport. The Council is the admissions authority for several maintained schools and is responsible for their admissions arrangements. The Council oversees all applications into state-funded schools no matter their governance as well as supporting public consultations regarding school admission arrangements to ensure they are compliant and are conducted transparently by all schools.
- 2.2 Local authorities are required to provide free school transport for eligible children who live within their area. This means children of statutory school age who attend the nearest suitable school to home where it is beyond an age-related walking distance of 2 or 3 miles. Further requirements relate to children from low-income households. In Devon, entitlement extends on a discretionary basis to designated or catchment schools.

- 2.3 There is a further requirement to support travel to and from education for young people in post-16 education where there is a demonstrable need to do so. This does not amount to a universal entitlement.
- 2.4 All local authorities are required under The Education (Relevant Areas for Consultation on Admission Arrangements) Regulations 1999 to establish specific geographic zones within which admission authorities for schools and academies must consult regarding their admission arrangements. These areas ensure that all stakeholders, including schools, parents, and local authorities, are involved in the consultation process for school admissions policies.
- 2.5 This report, and the recommendations within, ensure the Council will have the necessary admissions policies approved for the 2026-27 academic year, transport policies for the 2026-29 academic years, and approved relevant areas for admissions consultations for the 2027-29 academic years.

3) Proposals

Education transport

- 3.1 There are no proposals to make substantial amendments to the previously determined 2023-26 Education Transport Policy and 2023-26 Post-16 Education Transport Policy, charges that may apply to the provision of some services, or the way in which it operates. The amendments clarify existing policy wording and therefore it is recommended 2026-29 Education Transport Policy and 2026-29 Post-16 Education Transport Policy be determined as for 2023-26 with amendments to wording set out in **Appendix A**
- 3.2 Several own admissions authorities consulted on introducing or making changes to their catchment areas. Devon now needs to consider whether these are recognised for transport purposes, amending the 2026-29 Education Transport Policy accordingly. These considerations consider the potential impact on children and families, other schools, and the education transport budget. The amendments are listed at **Appendix B** with an overview of the approach take and the detailed review and officer comments/recommendations.
- 3.3 The policy documents that were consulted on and the versions with amendments for determination are at [Proposed and Recommended Transport Policy 2026-2029](#).

Admission arrangements

- 3.4 Local authorities are required by the [School Admissions Code](#) to co-ordinate normal round admissions to state-funded schools. Devon has consulted annually on co-ordinated admissions schemes for primary and secondary schools. Normal round is the first opportunity to be admitted into any school, at the beginning of Reception, Year 3 for junior schools and Year 7 for secondary schools. It also includes Year 7 for all-through schools (primary and secondary).

- 3.5 The Council co-ordinates in-year applications for community and voluntary controlled schools and extends this facility to own-admission authority mainstream state-funded schools. The purpose is to enable parents to apply for one or more schools at the same time and promote a fair, transparent and lawful admissions process for all children in the county. By doing so, the Council seeks to minimise instances where children, in particular vulnerable children, are missing education and to ensure compliance with the School Admissions Codes. As an integral part of a fair, legal and transparent admissions service, Devon-wide in-year co-ordination forms a part of the Admissions Service for all mainstream schools. On average, the co-ordinated scheme manages over 7,500 primary admissions, 7,500 secondary admissions and 6,500 in-year admissions each year.
- 3.6 The County Council is the admission authority for community and voluntary controlled schools and must determine an admissions policy for each school annually.
- 3.7 The 2026-27 Normal Round Co-ordinated Admissions Scheme, the 2026-27 In-Year Co-ordinated Admissions Scheme, and individual school policies brought forward arrangements from the previous academic year with some minor amendments, detailed at **Appendix C**. A list of the recommended Published Admission Numbers for community and voluntary controlled schools are detailed in **Appendix D**.
- 3.8 The policy documents that were consulted on and the versions with recommended amendments for approval are at [Co-ordinated Admissions Schemes](#).

Admissions relevant areas

- 3.9 Local authorities are required to determine the area within which the admission authorities of schools within their administrative area must consult on their admission arrangements. These are called admission relevant areas. The current relevant area for Devon is brought forward without amendment. This is detailed within the consultation proposal at [Relevant Areas](#).

4) Alternatives

- 4.1 There have been no significant changes to national guidance on home to school transport nor school admissions in the past year and therefore only minor amendments were considered appropriate for the proposed policies. However, several local proposals/options require reconsideration.

Education transport

- 4.2 Amendments to catchment areas were proposed by several own admission Devon schools for the 2026-27 academic year. Devon needed to consider whether these new or amended areas should be recognised for school transport entitlement on catchment school grounds. These were reviewed and are detailed at **Appendix B**.

Admission arrangements

- 4.2 Several schools requested that a lower PAN be put to consultation. These were reviewed and in general supported unless there were concerns local children could be refused access to their local school. The review and decisions are included in **Appendix D**.
- 4.3 One school requested a higher PAN. Although there is no statutory requirement to consult on an increase to PAN, this was included in the consultation and supported.

Admissions relevant areas

- 4.4 No alternative options were proposed as the current area has proved fit for purpose. The existing relevant areas comply with statutory requirements.

5) Consultations

- 5.1 A combined consultation for transport and admission arrangements took place from 13 November 2024 to 10 January 2025 by:
- Devon's [Have Your Say portal](#)
 - Devon's webpages at [Admissions, transport and relevant areas consultation – Education and Families](#)
 - Notice in the Western Morning News
 - and by email notification to:
 - Elected Members of the local authority
 - Neighbouring local authorities
 - Other councils within Devon and neighbouring local authority areas
 - All state-funded schools in Devon and neighbouring local authorities
 - Schools and Early Years settings were requested to feature the consultation in newsletters or other means used to communicate with their parents
 - Early years settings in Devon and neighbouring local authorities
 - Catholic and Church of England diocese boards of education
 - Education Trades Union representatives
 - The Devon Independent Admissions Appeals Members
- 5.2 Policies support the aim of being a child-friendly Devon as they seek to support efficient access to statutory education and minimise the time that Children And Young People are not in school.
- 5.2 The responses received are detailed at **Appendix F**.
- 5.3 Support was offered to individual trusts to ensure their proposals were legally compliant and any significant changes were flagged locally with key stakeholders. Where proposals from own admission authorities are considered contentious, such as significant changes in catchment, officers work directly with those schools to ensure that key stakeholders are informed.

6) Strategic Plan

- 6.1 The policies that are recommended for determination are statutorily required. The proposals in this report, alongside existing policies, support the Corporate Priority for being Ambitious for Children and Young People by ensuring access to school provision as quickly and efficiently as possible. This includes accessing school provision for children and young people who are deemed as being hard to place, Missing Education or seeking are returning from Electively Home Education and supports proposals in the Corporate Plan 2024-25 in respect of Children's Services.

7) Financial Considerations

- 7.1 There are no direct financial considerations of proposals in the report. A review of changes in school catchment areas has considered the financial implications of these changes.

8) Legal Considerations

- 8.1 The local authority meets its legal requirements by consulting on and determining suitable arrangements for school transport, admission arrangements and an admissions relevant area. Proposals in this report and policies are compliant with national statutory guidance.

9) Environmental Impact Considerations (Including Climate Change, Sustainability and Socio-economic)

- 9.1 Proposals in this paper support Devon's priority of providing local schools for local children, this includes the setting of planned admissions numbers for community and voluntary schools as well as responses to own admissions authority proposals.
- 9.2 Policies relating to admissions and school transport contribute to efficient place and transport and encourage where possible walking and cycling to local Devon schools.

1 Equality Considerations

- 10.1 Impact assessments have been undertaken for the proposal, consultation and determination of education transport arrangements and admission arrangements: published at [Impact Assessments - Admissions and Transport](#).
- 10.2 In terms of applications for school places, Devon meets very high levels of parental preference for school places. In 2024, 97% of primary and 93% of secondary applicants were allocated their first choice for normal rounds admission, 99% and 98% respectively for one of their three choices.

2 Risk Management Considerations

11.1 The key risk is that admission arrangements are not determined by the statutory date of 28 February. This would mean that Devon County Council was not compliant with the requirements of the Code. It would be liable to censure from the Department for Education and the Office of the Schools' Adjudicator (OSA). Otherwise, there are no significant risks that cannot be managed/mitigated.

12) Summary and Recommendations

12.1 The recommendations in this paper will ensure that the Council meets its statutory responsibilities with regard to school admissions and home to school transport as well as its broader role in supporting children and young people.

Jack Newton, Deputy Director – Head of Inclusion and Learning

Electoral Divisions: All

Cabinet Member for Children's Services and Schools: Councillor Andrew Leadbetter

Local Government Act 1972: List of background papers

Background Paper

Date

File Reference

Nil

Contact for enquiries:

Name: Simon Niles/Andrew Brent

Telephone: 01392 383000

Address: Room L60, County Hall, Exeter EX2 4QG

Appendix A

Amendments to wording within the 2026-29 Education Transport Policy

Section	
5.7	Wording added to the effect that transport may be provided to facilitate part-time attendance where this is necessary on medical grounds.
7.2	Wording added with clarification regarding the use of shared pick up and drop off points
7.3	Footnote added to provide for the recovery of additional costs in arranging ad hoc changes of collection after school requested by school at short notice.
9.2	Wording added to clarify the composition of the Transport Eligibility Officer Panel
Glossary	Network reviews Paragraph added to clarify that reviews of transport routes will be carried out periodically and may mean changes to how transport is provided.
	Transport entitlement errors New section added to advise that transport provision may be withdrawn immediately or within 12 weeks where it was given in error.
	Vehicles not arriving Wording added to include returning a child to a nominated drop-off point as an option where a vehicle does not arrive.
Appendix 4	Note added to clarify that catchment area entitlement to transport has no bearing on the statutory entitlements to transport based on distance to the nearest available school.
	10 Matford Brook Academy Wording updated regarding its catchment areas overlapping with other school catchments, and continued catchment school transport entitlement to the pre-existing schools.
	11 Willand School catchment area Wording updated to confirm the continued catchment school transport entitlement to Cullompton Community College.
	12 Atlantic Academy and Great Torrington School Clarification of catchment school entitlement added due to new catchment area overlapping with existing catchment area.
	13 Atlantic Academy and Budehaven Community School Clarification of catchment school entitlement added due to new catchment area.
	14 Axe Valley Academy and The Woodroffe School Clarification of catchment school entitlement added due to new catchment area overlapping with existing catchment area.
	15 All Saints' Marsh Church of England School Clarification of catchment school entitlement added due to new admissions priority area overlapping with existing catchment areas.
	16 Nine Catholic primary schools within Devon Clarification of catchment school entitlement added due to new admissions priority areas overlapping with existing catchment areas.

Amendments to wording within the 2026-29 Post-16 Education Transport Policy

Section	
8.2	Wording added with clarification regarding the use of shared pick up and drop off points
11.2	Wording added to clarify the composition of the Transport Eligibility Officer Panel
Glossary	Network reviews Paragraph added to clarify that reviews of transport routes will be carried out periodically and may mean changes to how transport is provided.
	Transport entitlement errors New section added to advise that transport provision may be withdrawn immediately or within 12 weeks where it was given in error.
	Vehicles not arriving Wording added to include returning a child to a nominated drop-off point as an option where a vehicle does not arrive.

Appendix B

Assessment of own admission authority proposals to amend/introduce catchment areas and subsequent proposed amendments to the recognition by Devon County council of catchment areas and their recognition for entitlement to free transport on catchment school grounds in the 2026-29 Education Transport Policy.

Amendments to school catchment areas for 2026-27 are, in all cases, subject to the determination of admission arrangements by the relevant admission authorities.

Considerations in all cases:

The discretionary entitlement to free transport on catchment area grounds is a long-standing policy in Devon. Its application has with the following aims and considerations which are not proposed to change.

- to be provided to a single school only.
- does not affect statutory entitlement on nearest school or on low-income grounds.
- aim to support Devon schools.
- where recognised, all catchment areas operate in the same way for transport purposes.
- existing passengers to be unaffected by changes to transport entitlement while they remain on roll at the same school and residing at the same address.
- to be no transitional arrangement for younger siblings at the same address.
- all transport entitlement is subject to maximum walking distances of 2 miles for primary school children and 3 miles for secondary school children.
- Transport entitlement is also subject to the availability of walking routes. The shortest route may be less than 2 (or 3) miles but if part is unavailable on safety grounds, the shortest alternative route may be beyond walking distance and therefore with an entitlement to free transport.

There are several proposed changes to school catchment areas 2026-27. They can be viewed here: [DCC School Designation Areas - 2026-27](#)

A) High Bickington Church of England Primary Academy

TEAM Multi-Academy Trust propose to reintroduce an admissions catchment area, covering the same geographical area as previously.

Most residents in the catchment area live within walking distance of the school and are not entitled to free transport. Those living further than walking distance are closest to the school or to Umberleigh school which is full in all year groups. If unable to be admitted to Umberleigh, transport would be provided to High Bickington as the nearest alternative school. This is a largely rural catchment area with few properties further than walking distance.

Specific considerations

- proposals would reinstate the school's former catchment area.

- residents of this primary school catchment would be entitled to free transport on that basis as they were previously and as in other catchment areas across the county.
- would be a new entitlement for children in the area.

How would current passengers be affected if they were new applicants for transport in September 2026?

- The 4 children currently being transported by Devon would be entitled to free transport.

How would the proposed change affect local transport in 2026 if applied to the next reception intake in 2025?

- 9 applicants for the next reception intake.
- 3 do not live in the proposed new catchment area. No effect on entitlement or costs.
- the remaining 6 live in-area and within walking distance. No effect on entitlement or costs.

Children living in-area but closer to Umberleigh would have entitlement to Umberleigh on statutory, nearest school grounds and to High Bickington on catchment school grounds. The decision here is to acknowledge the new catchment areas in the same way as other catchment areas across the county.

Amendment - the catchment area for High Bickington Church of England Primary Academy to be recognised for transport eligibility purposes.

B) Brayford Academy

TEAM Multi-Academy Trust propose to reintroduce an admissions catchment area, covering the same geographical area as previously.

Most residents in the catchment area live within walking distance of the school and are not entitled to free transport. Those living further than walking distance are closest to the school or to Bratton Fleming Primary School. If unable to be admitted to Bratton Fleming, transport would be provided to Brayford as the nearest alternative school. This is a largely rural catchment area with few properties further than walking distance.

Specific considerations

- proposals would reinstate the school's former catchment area.
- residents of this primary school catchment would be entitled to free transport on that basis as they were previously and as in other catchment areas across the county.
- would be a new entitlement for children in the area.

How would current passengers be affected if they were new applicants for transport in September 2026?

- There are currently no passengers on Devon transport to Brayford.

How would the proposed change affect local transport in 2026 if applied to the next reception intake in 2025?

- 3 applicants for the next reception intake.

- none live in the proposed new catchment area. No effect on entitlement or costs.

Children living in-area but closer to Bratton Fleming would have entitlement to Bratton Fleming on statutory, nearest school grounds and to Brayford on catchment school grounds. The decision here is to acknowledge the new catchment areas in the same way as other catchment areas across the county.

Amendment - the catchment area for Brayford Academy to be recognised for transport eligibility purposes.

C) Witheridge Church of England Primary Academy

TEAM Multi-Academy Trust propose to reintroduce an admissions catchment area, covering the same geographical area as previously.

Most residents in the catchment area live within walking distance of the school and are not entitled to free transport. Those living further than walking distance are closest to the school or to Rackenford Church of England Primary School or, the furthest north, to Bishops Nympton Primary School. If unable to be admitted to Rackenford or Bishops Nympton, transport would be provided to Witheridge as the nearest alternative school. This is a largely rural catchment area with few properties further than walking distance.

Specific considerations

- proposals would reinstate the school's former catchment area.
- residents of this primary school catchment would be entitled to free transport on that basis as they were previously and as in other catchment areas across the county.
- would be a new entitlement for children in the area.

How would current passengers be affected if they were new applicants for transport in September 2026?

- The 6 children currently being transported by Devon would be entitled to free transport.

How would the proposed change affect local transport in 2026 if applied to the next reception intake in 2025?

- 15 applicants for the next reception intake.
- 5 do not live in the proposed new catchment area. No effect on entitlement or costs.
- 9 live in-area and within walking distance. No effect on entitlement or costs.
- 1 applicant lives in area, over walking distance, and has Witheridge as the nearest school. No effect on entitlement or costs.

Children living in-area but closer to Rackenford or Bishops Nympton would have entitlement there on statutory, nearest school grounds and to Witheridge on catchment school grounds. The decision here is to acknowledge the new catchment areas in the same way as other catchment areas across the county.

Amendment - the catchment area for Witheridge Church of England Primary Academy to be recognised for transport eligibility purposes.

D) Okehampton Primary School and Foundation Unit

The Dartmoor Multi-Academy Trust propose to reduce its catchment area where it overlaps with the St James Church of England Primary and Nursery School catchment area. St James school was opened in September 2018 and is also a member of the Dartmoor Multi-Academy Trust. St James is now established as a local school serving the eastern part of the town of Okehampton and the rural area to the north-east.

The majority of addresses within the overlapped area are within walking distance of St James as a catchment school and are not entitled to free transport to St James. The routes towards Okehampton primary pass by or close to St James.

By reducing its area, Okehampton would no longer be a catchment school for this area.

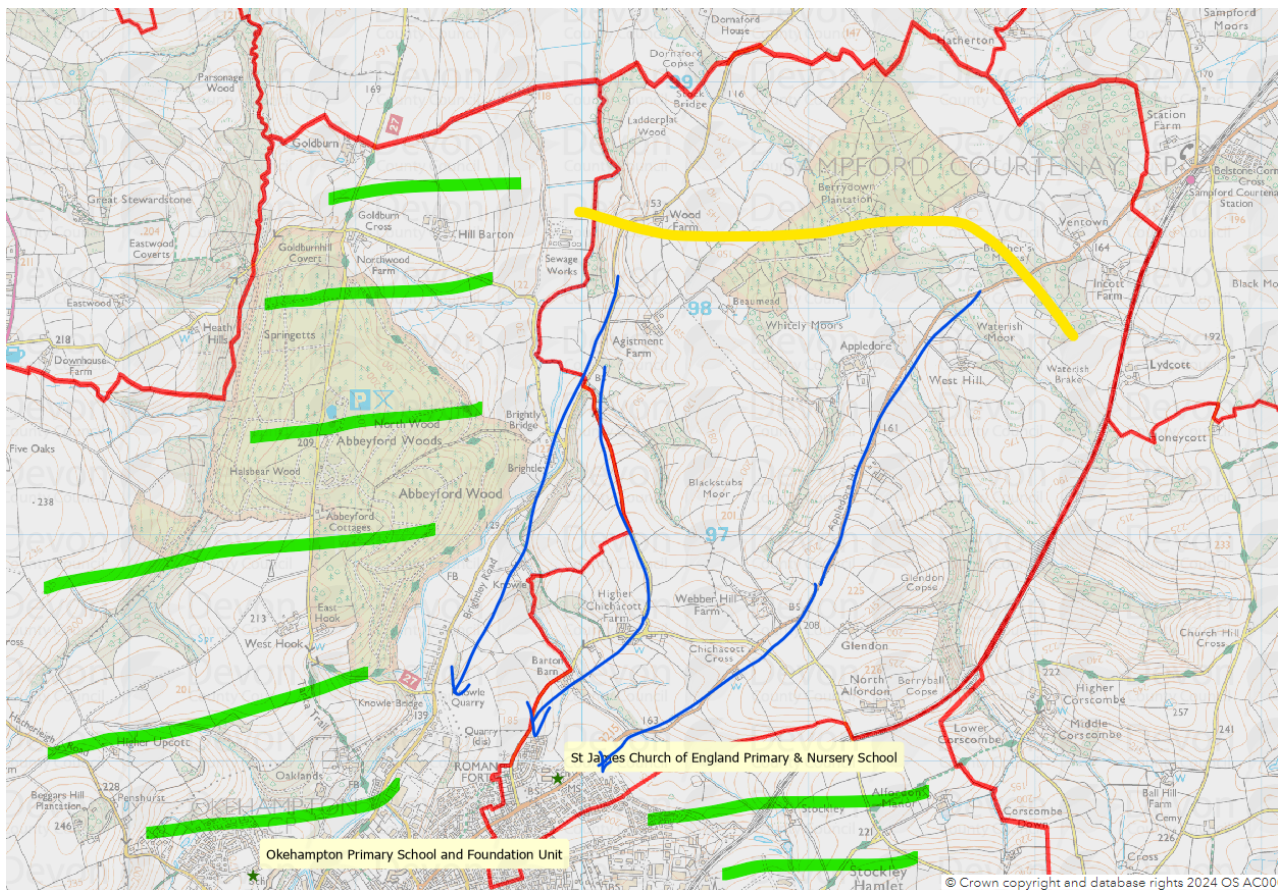
The map below shows the St James' area alongside the north-eastern part of the Okehampton catchment area.

Catchment boundaries are in red.

The remaining Okehampton catchment is hatched with green marking.

The area below the yellow line (approximate marking) is within walking distance of St James'.

Blue lines indicate the travel to school routes towards St James' and Okehampton from the north of the St James' area.



The entitlement to free transport to St James' is unaffected.

There would be no entitlement to free transport on catchment school grounds to Okehampton from the St James' catchment area. The decision here is to acknowledge the new catchment areas in the same way as other catchment areas across the county.

Amendment - the smaller catchment area for Okehampton Primary School and Nursery Unit to be recognised for transport eligibility purposes.

E) Axe Valley Academy

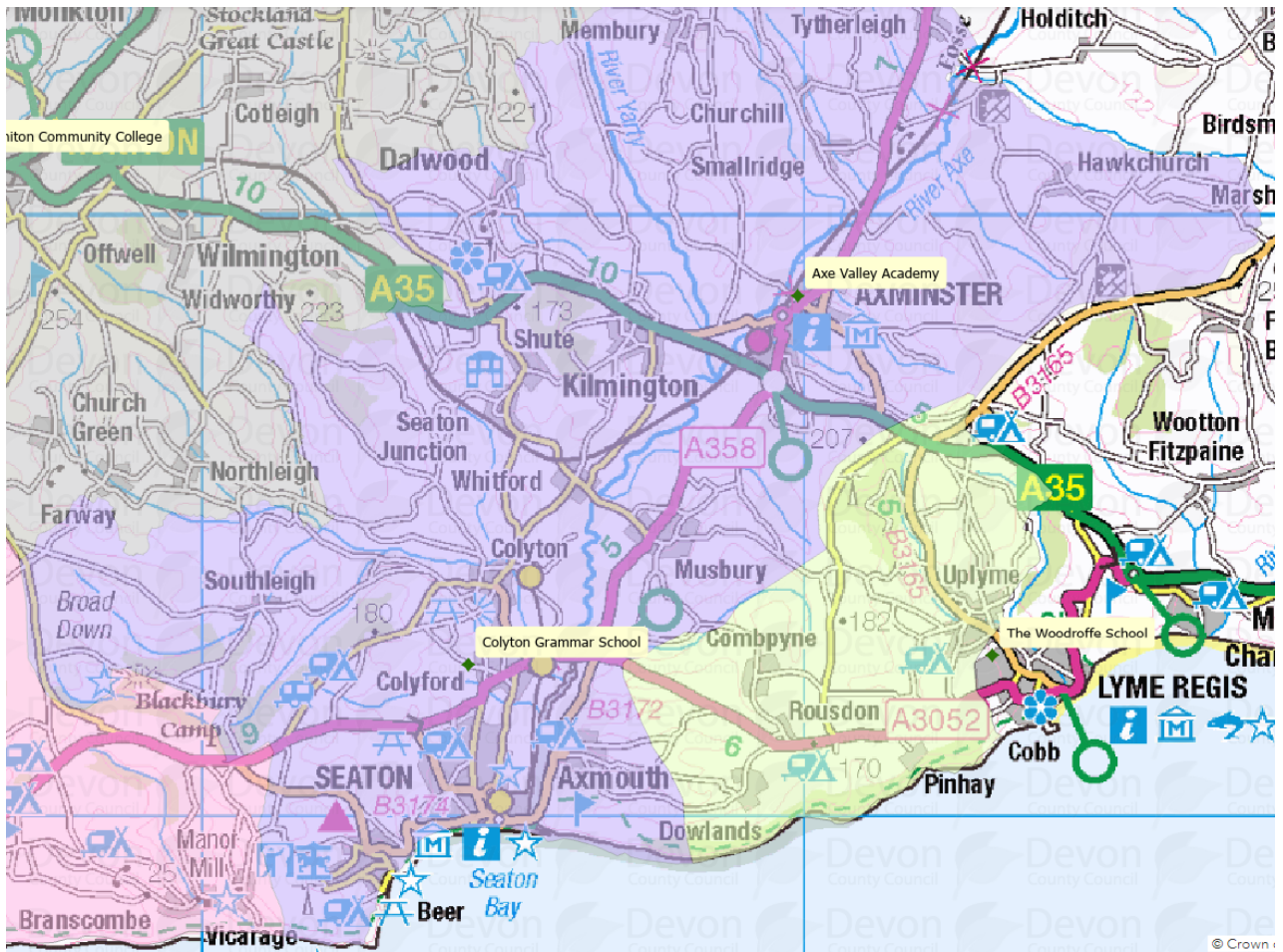
The Blackdown Education Partnership propose to extend the admissions catchment area for Axe Valley Academy within Devon's administrative border to include the catchment for Mrs Ethelston's Church of England Primary Academy. This would establish Axe Valley as a designated secondary school for the south-eastern part of the county. Currently, residents in this part of Devon have admission priority to a Devon primary school but not to a Devon secondary school.

The Woodroffe School is located very close to the county boundary, in the Dorset Council area. The Woodroffe catchment area extends into Devon, closely matching the catchment area for Mrs Ethelston's.

The map below shows the catchment area for Woodroffe, shaded in lime green as it coincides with the catchment area for Mrs Ethelston's Church of England Primary School within the Devon County Council administrative area. The larger part of Woodroffe's catchment lies within the Dorset Council administrative area.

The current catchment for Axe Valley is shaded in purple.

With the extension of Axe Valley's area, the lime green area would be shared at secondary school level by Axe Valley and Woodroffe.

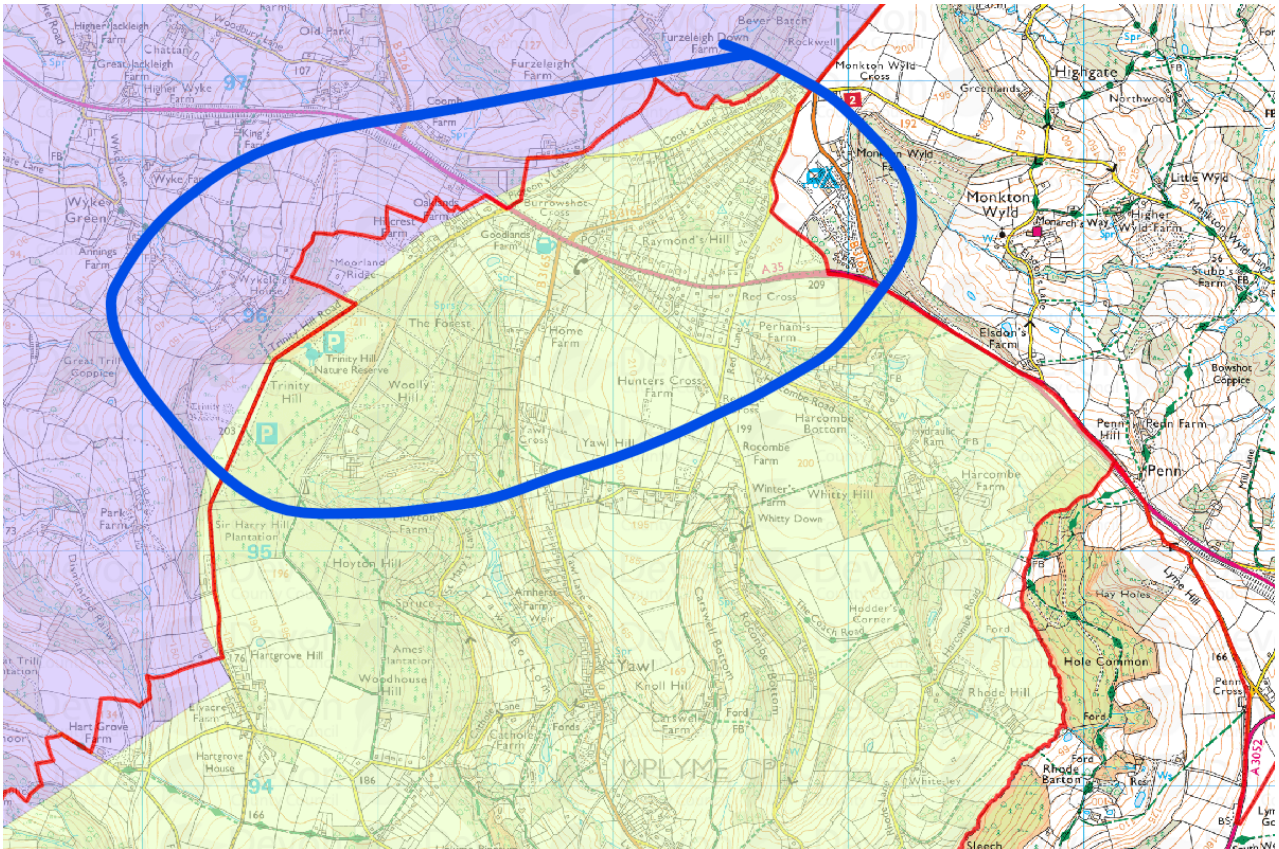


Residents of this area are currently eligible for free transport to Woodroffe on catchment school grounds.

The closest secondary school to most addresses in this area is Woodroffe; most addresses are in the town of Uplyme, within statutory walking distance which means there is no right to free transport on catchment or nearest school grounds.

The second map shows the northern part where the catchment areas would overlap, close to or beyond the statutory walking distance of 3 miles from Woodroffe, approximately circled in blue.

In this area, some of the properties are beyond walking distance from Woodroffe. Under an amended policy, new applications from these addresses would not be entitled to free transport to Woodroffe on catchment school grounds but would be entitled on nearest school grounds.



- The consultation has been raised specifically with Mrs Ethelston's Church of England Primary Academy, The Woodroffe School and with Dorset Council.
- The Woodroffe School has responded to express concern over the impact on admission levels there should catchment school transport be withdrawn for new applicants. The school was also critical of the consultation process.
- Dorset Council similarly responded to the consultation.

How would current passengers be affected if they were new applicants for transport in September 2026?

- subject to a pending route availability assessment, the 12 children currently being transported by Devon (and still at school in 2026) 11 would be entitled to free transport.¹
- of these, 3 households have a younger sibling who would not be entitled to free transport to Woodroffe.

How would the children who have attended or are attending Woodroffe have been affected had this amendment taken place previously (children and young people who are now of year 7-14 age)?

- There are 6 addresses of children across these 8 cohorts where there would have been no entitlement to free transport – on the grounds that the address is within walking distance of Woodroffe or they are beyond walking distance and Axe Valley is the closer school.

¹ This assessment may confirm that a shorter route is available such that all children would be within walking distance of The Woodroffe School.

- These children could still have applied for Woodroffe with the same admissions priority and made their own arrangements for travel, using the same public bus service but without the bus pass being paid for by Devon.

How would the proposed change affect local transport in 2026 if applied to the next year 7 intake in 2025?

- 115 applications by Devon children for secondary transfer to Woodroffe.
- of these, 92 do not live in the Woodroffe catchment. No effect on entitlement or costs.
- of the remaining applicants, 22 live in the Woodroffe catchment and within walking distance of Woodroffe. No effect on entitlement or costs.
- and 1 applicant lives in the Woodroffe catchment, beyond walking distance and with Woodroffe as the closest school. No effect on entitlement or costs.

There would be no entitlement to free transport on catchment school grounds to Woodroffe from within Devon. The large majority of children in this area would not be affected by a change to catchment transport entitlement as they are either not entitled now or would continue to be entitled on nearest school grounds. The decision here is to acknowledge the extended catchment area for Axe Valley in the same way as other catchment areas within the county.

Amendment - the extended catchment area for Axe Valley Academy to be recognised for transport eligibility purposes, removing the transport entitlement to the other local authority school.

Bideford College and Atlantic Academy

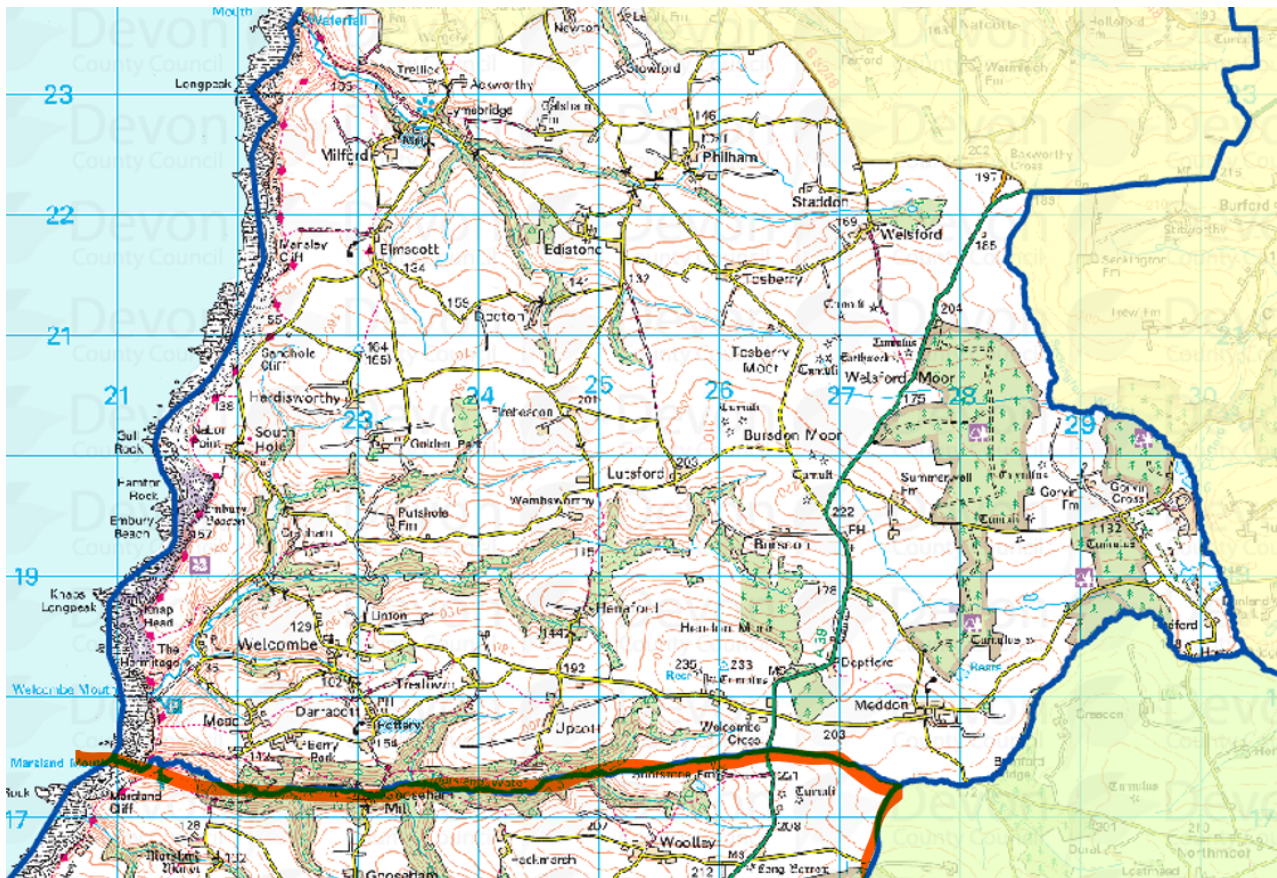
The Athena Learning Trust propose to reduce the admissions catchment area for Bideford College, removing it from the catchment for Hartland Primary School (northern section), Woolsery Primary school and Parkham Primary school (northern section) while introducing a catchment area for the first time for Atlantic Academy, to cover the whole of the Hartland, Woolsery and Parkham school catchments. This would establish Atlantic Academy as the designated secondary school for the north-western part of the county, including the southern section of the Hartland catchment area which has hereto not had a Devon catchment school. Atlantic would also give admissions priority for children in the southern section of the Parkham catchment, most addresses being within walking distance. This area is currently part of the Great Torrington School catchment area.

Atlantic Academy was opened as a new school in 2018.

F) the southern section of the Hartland Primary School catchment.

The catchment area for Hartland Primary School has two distinct parts. The northern part is currently also in area for Bideford College (shaded yellow in the map below); the southern part extends to the county boundary with Cornwall and has no catchment secondary school. These Devon residents have been provided with free transport to Budehaven Community School which is closer to them than Bideford College. The closest school to all addresses in this area is now Atlantic Academy. There is already a statutory eligibility for free transport to Atlantic Academy.

The map below shows the southern part of the Hartland school catchment, unshaded. The green shaded area is in catchment for Holsworthy Community College. The red line indicates the county boundary with Cornwall.



- The consultation has been raised specifically with Hartland Primary School, Budehaven Community School and with Cornwall Council.

How would current passengers be affected if they were new applicants for transport in September 2026?

- the 10 children currently being transported by Devon (and still at school in 2026) would be entitled to free transport.
- of these, 1 household has a younger sibling who would not be entitled to free transport to Budehaven.

How would the proposed change affect local transport in 2026 if applied to the next year 7 intake in 2025?

- 40 applications by Devon children for secondary transfer to Budehaven.
- of these, 36 do not live in the southern part of the Hartland area. No effect on entitlement or costs.
- of the remaining applicants, 4 live in the southern part of the Hartland area, beyond walking distance. The closest school is Atlantic. They would not be entitled to free transport to Budehaven.

- There are 2 applicants with younger siblings. They too would not be entitled to transport to Budehaven.

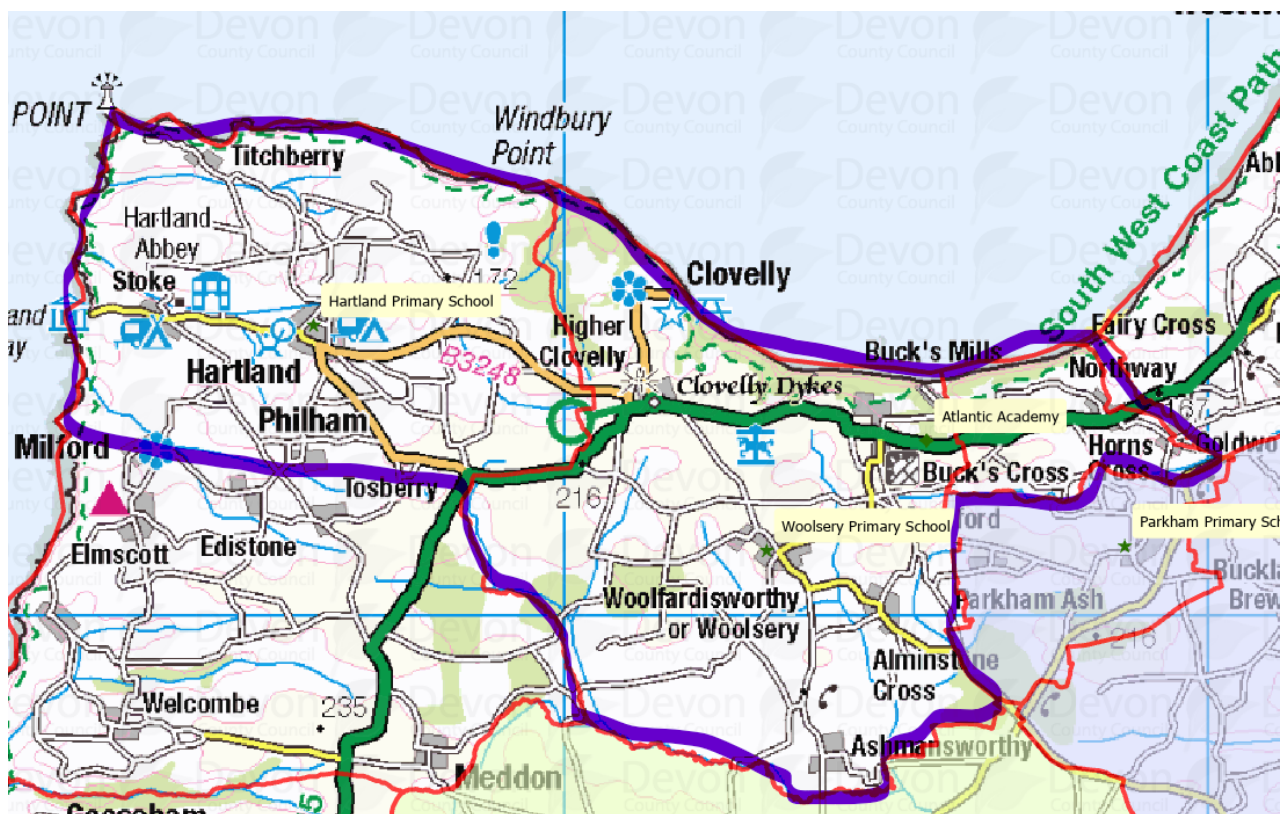
There would be no entitlement to free transport to Budehaven from within Devon. It is not the closest school and is not a catchment school for the area. The decision here is to acknowledge the catchment area for Atlantic in the same way as other catchment areas within the county.

Amendment - the catchment area for Atlantic Academy to be recognised for transport eligibility purposes, removing the transport entitlement to the other local authority school.

G) the northern section of the Hartland Primary School catchment, the Woolserly Primary School catchment and the northern section of the Parkham Primary School catchment

Residents in this area are currently eligible for free transport to Bideford College. The closest school to all addresses in this area is now Atlantic Academy. There is a statutory eligibility for free transport to Atlantic Academy where the address is further than the statutory walking distance of three miles. Transport from Hartland to Bideford travels along the A39, passing Atlantic Academy.

The map below shows these three parts of the proposed new catchment area for Atlantic Academy, highlighted with a purple line.



- The consultation has been raised specifically with Hartland, Woolsery and Parkham primary schools.
- Bideford would no longer be a catchment school for this area.

How would current passengers be affected if they were new applicants for transport in September 2026?

- the 28 children currently being transported by Devon (and still at school in 2026) would be entitled to free transport.
- of these, 12 households have a younger sibling who would not be entitled to free transport to Bideford.

How would the proposed change affect local transport in 2026 if applied to the next year 7 intake in 2025?

- There are 20 applicants for Bideford College who are pupils at either Hartland or Woolsery. None at Parkham.
- If applying for 2026, they would not be in catchment for Bideford and Bideford is not the closest school. They would not be entitled to free transport to Bideford College.

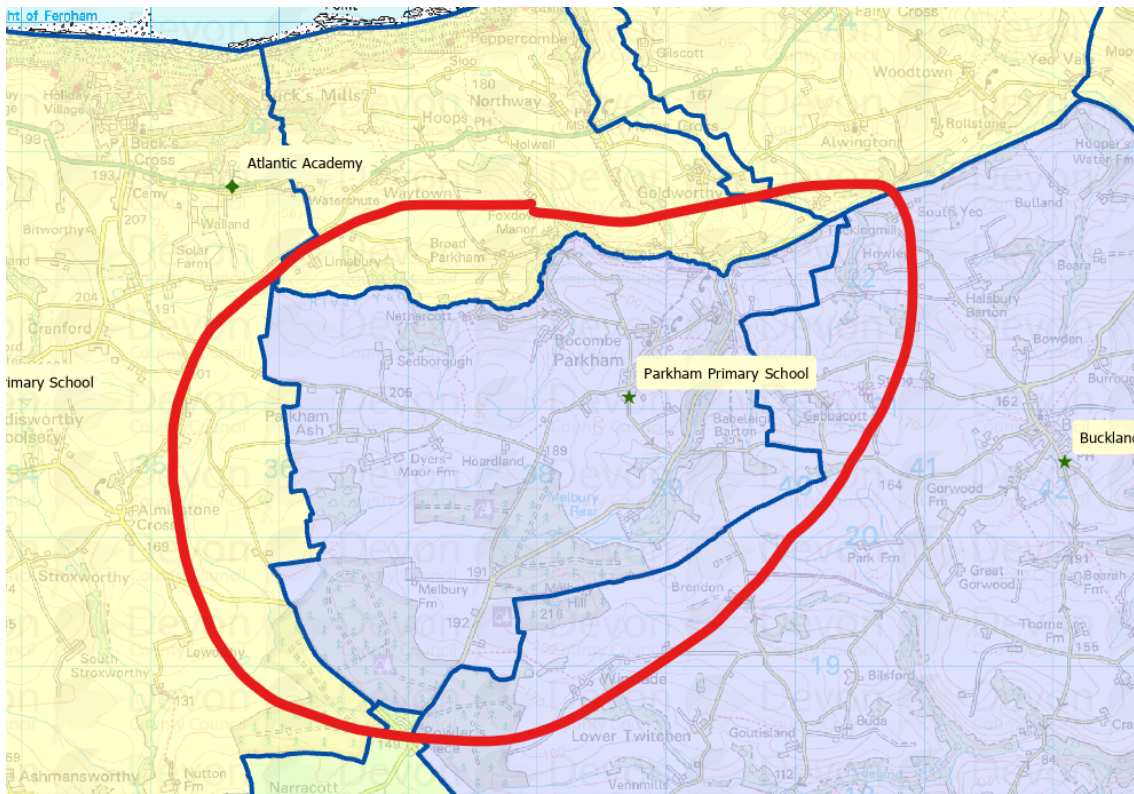
There would be no entitlement to free transport to Bideford from these areas. It is not the closest school and would not be a catchment school. The decision here is to acknowledge the catchment area for Atlantic in the same way as other catchment areas within the county.

Amendment - the catchment area for Atlantic Academy to be recognised for transport eligibility purposes, removing the transport entitlement to Bideford College.

H) the southern section of the Parkham Primary School catchment

Residents in this area have been eligible for free transport to Great Torrington School. The closest school to all addresses in this area is now Atlantic Academy. There is a statutory eligibility for free transport to Atlantic Academy where the address is further than the statutory walking distance of three miles. Addresses in the north-western third of this section of the catchment area for Parkham are within the statutory walking distance to Atlantic Academy.

The map below shows what would be the shared secondary school catchment for Atlantic Academy and Great Torrington School, circled in red.



- The consultation has been raised specifically with Great Torrington School and Parkham Primary School.
- Devon has not previously removed existing catchment school transport entitlement where a school has introduced or extended a catchment area. This should be done where there are capacity issues at the pre-existing catchment school or there is compelling evidence of demand from the local community to do so.
- Great Torrington School has not proposed to amend its catchment area or feeder school links, continuing to see Parkham Primary School and the southern part of its catchment area as valued parts of its community.
- There has been a long-standing recognition of priority for children in the southern part of the Parkham area to attend Great Torrington School, further than the closer alternative of Bideford College, now Atlantic Academy.

How would current passengers be affected if they were new applicants for transport in September 2026?

- the 10 children currently being transported by Devon to Great Torrington (and still at school in 2026) would be entitled to free transport to Great Torrington.
- of these, 7 households have a younger sibling. No impact on entitlement or costs.

How would the proposed change affect local transport in 2026 if applied to the next year 7 intake in 2025?

- There are 8 children on roll at Parkham in Year 6. Of these 3 have applied for Atlantic and 1 for Budehaven. The residents of the southern part of the Parkham catchment area have all applied for Great Torrington School. They will be entitled to transport on catchment school grounds. Academy and 4 for Great Torrington School

- To continue to recognise Great Torrington as the catchment school for transport entitlement purposes is to maintain the status quo. The southern part of the Parkham area has been in catchment for Great Torrington for many years and is a valued part of the school's community. There will continue to be free transport to Atlantic Academy on nearest school grounds for those addresses beyond the statutory walking distance.

The amended policy does not recognise the catchment area for Atlantic Academy for the purpose of transport entitlement.

I) All Saints Marsh Church of England Academy, Newton Abbot

The Learning Academy Partnership has proposed to introduce admissions priority for children living within a two-mile radius of the school. This circle overlaps the surrounding schools' catchment areas.

In a network of standard catchment areas, All Saints' would not be large enough to attract free transport. Measurements for admissions purposes are straight-line; those for transport purposes are the shortest available route. This means that some homes within an admissions 2 mile radius will be further than the statutory walking distance of 2 miles.

The newly introduced admissions priority area would cover addresses that are either under walking distance or already have a long-standing admissions priority to another school. All addresses within the All Saints' Marsh admissions priority area are within walking distance of the school or of another school with admissions priority.

Officers have worked closely with the Trust over the introduction of admissions priority areas and the likely policy not to recognise them for transport eligibility purposes as is the position for other schools taking the same approach.

The amended policy does not recognise the admissions priority area for All Saints' Marsh Church of England Academy for the purpose of transport entitlement.

J) Our Lady and St Patrick's Roman Catholic Primary School

Our Lady's Catholic Primary School, Barnstaple

St John the Baptist Roman Catholic Primary School, Dartmouth

St John's Catholic Primary School, Tiverton

St Joseph's Catholic Primary School, Exmouth

St Joseph's Catholic Primary School, Newton Abbot

St Mary's Catholic Primary School, Axminster

St Mary's Catholic Primary School, Buckfast

St Nicholas Catholic Primary School

The Plymouth CAST Multi-Academy Trust has proposed to introduce admissions priority for children living within a two-mile radius of its schools. These radii would cover part of the catchment area for the closest school or schools. Measurements for admissions purposes are straight-line; those for transport purposes are the shortest available route. This means

that homes within an admissions 2 mile radius will be further than the statutory walking distance of 2 miles.

All addresses within the schools' admissions priority areas are within walking distance of the school or of another school with admissions priority.

Officers have worked closely with the Trust over the introduction of admissions priority areas and the likely policy not to recognise them for transport eligibility purposes as is the position for other schools taking the same approach.

The amended policy does not recognise the admissions priority area for the schools listed above for the purpose of transport entitlement.

Appendix C

Recommendation: to accept the following amendments to wording within the 2026-27 normal round co-ordinated admission scheme

Section	
4.5	Add references to applications for sixth form admissions sixth form.
5.2	Add reference to supplementary information forms for academies in other local authority areas supported by the Devon Admissions Traded Service.
9.2	Add footnote to explain that late applications for children in care and those previously in care are processed differently from timely applications and in-year applications.
16.9	Provision detailed for school transport during the school day to be provided where part-time attendance is on medical grounds rather than parental preference.
29.5	Add footnote to note that an in-year Admission number is known as a Working PAN.
Glossary*	Compulsory School Age Add note that education can be in a school or through elective home education.
	Documentary Evidence Add the words 'identity or' to elements of an application for which evidence may be requested.
	GDPR Add contextual wording for circumstances when details of an application may be shared with another person with parental responsibility.
	Multiple birth siblings Add note to confirm that a multiple birth sibling admitted above 30 in the class would be a permitted exception to Infant Class Size Legislation.
	Nurseries and pre-schools Add wording to explain the criteria for priority to be given to children from a school's nursery.
	Offers Add the word 'attempted' where the school or local authority seeks to contact a parent who has not responded to the offer of a place. Add explanatory note, providing for the time scale for in-year admission after an offer has been made.
	Prejudice to efficient education Add wording to the explanation of future prejudice.
	Waiting lists Add wording to explain that offers from a school's waiting list must be accepted or declined by parents by the end of the next school day.
Appendix 3 and 4	Add wording within the body of the criteria to emphasise the requirement to complete a supplementary information form as evidence of eligibility for certain priority.
Appendix 4	Add note that priority 3 and 6 apply only at the admissions normal round.

* Amendments to the Glossary also apply to the In-Year Co-ordinated scheme and to individual school policies.

Recommendation: to accept the following amendments to wording within the 2026-27 in-year co-ordinated admission scheme

Section	
3.1	Add note to clarify that in-year admission applications are processed through this scheme for schools located in Devon only.
5.2	Add reference to supplementary information forms for academies in other local authority areas supported by the Devon Admissions Traded Service.
6.3	Add footnote to explain the difference between resident and non-resident parent for school admission purposes.
6.4	Add provision for where one parents wants a child to be taught in school and the other parent wants the child to be home educated.
12.6	Amend provision for the In-Year Hard to Place Panel to meet every other week rather than weekly.
13.3	Add wording to clarify that Fair Access arrangements apply where a child does not have access to suitable education other than in school.
30.1	Add footnote to note that an in-year Admission number is known as a working PAN.
Appendix 3 and 4	Add wording within the body of the criteria to emphasise the requirement to complete a supplementary information form as evidence of eligibility for certain priority.
Appendix 4	Add note that priority 3 and 6 apply only at the admissions normal round.

Recommendation: to accept the following amendments to wording within the 2026-27 individual community and voluntary controlled school admission policies

Section	
Page 2	Footnote 5 Add wording to make provision for applications submitted after the closing date to be considered as timely.
	Footnote 7 Add wording to clarify that appeals after the main summer appeal season may be heard after the academic year has started.
Page 4	Oversubscription criteria Add wording within the body of the criteria to emphasise the requirement to complete a supplementary information form as evidence of eligibility for certain priority.
Page 6	School Admissions Policies Add wording detailing what an admissions policy will explain.
	How to apply for admission in-year Add wording to explain in-year admissions. Add wording to clarify that applications received by 6pm on any one day will be considered together.
Page 7	Add new section "Admission when the school is full"

Appendix D

Recommendation: to determine the 2026-27 Published Admission Numbers (PANs) for Community and Voluntary Controlled Schools below.

DfE	School name	Determined PAN 2025-26	Recommended for Determination PAN 2026-27	Comments
2400	Abbotskerswell Primary School	15	15	
2201	Ashwater Primary School	8	8	
3053	Berrynarbor Church of England Primary School	12	12	
2210	Bishops Nympton Primary School	10	10	
2402	Bishopsteignton School	30	30	
2002	Bow Community Primary School	20	20	
2472	Bradley Barton Primary School and Nursery Unit	60	60	
3001	Bramford Speke Church of England Primary School	10	10	
2476	Canada Hill Community Primary School	45	45	
2007	Cheriton Fitzpaine Primary School	15	15	
3105	Chudleigh Church of England Community Primary School	60	60	
2009	Clyst St Mary Primary School	30	30	
3152	Cornwood Church of England Primary School	15	15	
2015	Culmstock Primary School	20	20	
2431	Decoy Primary School	60	60	
2416	Denbury Primary School	17	17	
2223	East Anstey Primary School	7	7	
2207	East-The-Water Community Primary School	60	60	
2420	Exminster Community Primary	60	60	
3060	Goodleigh Church of England Primary School	10	10	
3061	Great Torrington Bluecoat Church of England Primary School	75	75	
2228	Halwill Community Primary School	15	15	

2605	Hatherleigh Community Primary School	30	30	
3779	Haytor View Community Primary School	30	30	
2012	Hayward's Primary School	60	60	
2448	Hazeldown School	60	45	School requested a reduction in PAN from 60 to 45. Forecast demand is low with very small in-area cohorts. There is capacity across the town of Teignmouth. Recommendation: 45
2432	Highweek Community Primary and Nursery School	60	60	
3063	Holsworthy Church of England Primary School	45	45	
2048	Honiton Primary School	60	60	
3065	Ilfracombe Church of England Junior School	90	75	School requested a reduction in PAN from 90 to 60. Forecast demand for places with children moving on from the infant school is 62 or above. This indicates that a reduction in PAN to 60 would be insufficient to meet demand from the infant school and others who may apply from primary schools or otherwise. A compromise reduction to 75 was discussed and agreed with the school. Recommendation: 75
2232	Ilfracombe Infant and Nursery School	120	120	School requested a reduction in PAN from 120 to 90. Forecast demand for places with children moving on from the infant school is 98 or above. This indicates that a reduction in PAN to 90 would be insufficient to meet demand from the catchment area. While the school sees some local parents seeking places at rural alternative schools, the indication is that four forms of entry would be required. Recommendation: 120

3013	Kentisbeare Church of England Primary School	25	25	
2234	Kentisbury Primary School	8	8	
2050	Kilminster Primary School	15	15	
3112	Kingskerswell Church of England Primary School	60	60	
2079	Landscore Primary School	60	60	
2237	Langtree Community School and Nursery Unit	12	12	
2428	Loddiswell Primary School	15	20	The increase in PAN reflects an increase in physical capacity and local demand at the school with the opening of an additional classroom. Recommendation: 20
3014	Lympstone Church of England Primary School	30	30	
3114	Malborough with South Huish Church of England Primary School	15	15	
2622	Mary Tavy and Brentor Community Primary School	15	15	
2715	Modbury Primary School	30	30	
2239	Monkleigh Primary School	15	15	
2054	Newton Poppleford Primary School	30	20	School requested a reduction in PAN from 30 to 20. Forecast demand is low with very small in-area cohorts. There is capacity across the area. Recommendation: 20
2055	Newton St Cyres Primary School	20	20	
3015	Offwell Church of England Primary School	17	17	
3066	Parracombe Church of England Primary School	8	8	
3016	Payhembury Church of England Primary School	15	15	
3017	Plymtree Church of England Primary School	15	15	
2059	Sandford School	30	30	
2060	Seaton Primary School	60	60	
2618	Shaugh Prior Primary School	10	10	
2243	Shebbear Community School	10	10	
2062	Shute Community Primary School	12	12	

3022	Silverton Church of England Primary School	20	20	
2245	South Molton Community Primary School	45	45	
2242	St Giles-on-the-Heath Community School	15	15	
3128	St Michael's Church of England Primary School	60	60	
3024	Stoke Canon Church of England Primary School and Pre-school	15	15	
2033	Stoke Hill Infant and Nursery School	90	90	
2034	Stoke Hill Junior School	90	90	
2446	Stokenham Area Primary School	30	30	
2609	The Erme Primary School	25	15	School requested a reduction in PAN from 25 to 15. Forecast demand is low with very small in-area cohorts. There is capacity across the town of Ivybridge. Recommendation: 15
2461	The Grove School	45	45	
2090	The Topsham School	30	30	
3025	Thorverton Church of England Primary School	15	15	
3026	Uplowman Church of England Primary School	8	8	
2073	Upottery Primary School	15	15	
2209	West Croft School	90	60	School requested a reduction in PAN from 90 to 60 In-area cohorts are higher than 60 but there is capacity across the town of Bideford. Recommendation: 60
2249	West Down School	15	15	
2074	Whimble Primary School	20	20	
2075	Willand School	60	60	
3011	Withycombe Raleigh Church of England Primary School	90	90	

Appendix E

Timetable for the admissions cycle up to May 2026

Statutory dates are in bold.

	Action	Action by
15 January 2025	Deadline for timely applications for the normal round of admissions to primary, infant and junior schools.	Admissions Service
31 January	Deadline for the completion of the consultation on proposed admission arrangements	Admission Authority
28 February	All policies for 2026-27 to be formally determined – including the date of determination in the Policy version section.	Admission Authority
28 February	Appeals timetable to be published	Admissions Service Admissions authority
3 March	National Offer Day for the normal round of admissions to secondary schools for September 2025	Admissions Service
15 March	All policies to be published on school websites All faith policies to be forwarded to Diocese All policies to be forwarded to LA Senior Policy Officer.	Admission Authority
16 April	National Offer Day for the normal round of admissions to primary, infant and junior schools for September 2025	Admissions Service
By 15 May	Deadline for objections to the OSA (Office of the Schools Adjudicator) for 2026-27 determined policies	
Summer term 2025	Review content and presentation of policies for 2027-28	Admissions Service
By 1 August	All faith own admission authority schools will receive a suggested new document for consideration	Admissions Service
By 1 September	All other own admission authority schools will receive a suggested new document for consideration	Admissions Service
By 30 September	Faith schools to meet and agree a proposed policy then forward to Diocese (CE confirmed timescale)	Admission Authority
31 October	Deadline for timely applications for the normal round of admissions to secondary schools.	Admissions Service
By 31 October	Diocese to forward proposed policies to LA Policy Officer	CE Diocese Catholic Diocese (if required)
By 31 October	All other own admission authority schools to return proposed policies to LA Policy Officer	Admission authority
1 November	LA-hosted consultation live for proposed admission arrangements for 2027-28	Admissions Service
9 January 2026	LA-hosted consultation ends	Admissions Service
31 January	Deadline for the completion of the consultation on proposed admission arrangements	Admission Authority
28 February	All policies for 2027-28 to be formally determined – including the date of determination in the Policy version section.	Admission Authority

28 February	Appeals timetable to be published	Admissions Service/Authority
15 March	All policies to be published on school websites All faith policies to be forwarded to Diocese All policies to be forwarded to LA Senior Policy Officer.	Admission Authority
By 15 May	Deadline for objections to the OSA for 2027-28 determined policies	

Appendix F

Responses to the consultation

- There have been no responses to the consultation regarding the proposed normal round and in-year co-ordinated admissions schemes.
- There have been no responses from third parties regarding the proposed Published Admission numbers and other arrangements for individual community and voluntary controlled schools.
- Responses regarding the proposed arrangements of own admission authority schools have been forwarded to the schools and Trusts concerned for their consideration.

Local authority officers have continued discussion with all schools through the consultation period to clarify matters and address queries about arrangements.

Responses were received during the consultation period from The Woodroffe School. The headteacher and governing board felt that the consultation had not been sufficiently robust and transparent regarding the proposal by Blackdown Education Partnership to extend the catchment area of Axe Valley Academy and the potential for there to be an amendment to the entitlement to free transport on catchment school grounds to The Woodroffe School. Further, the school expressed concern that there would be a negative impact on the number of applications that would be made by children from within the Devon section of its catchment area.

Dorset Council also responded during the consultation period with concerns about the impact on the level of admissions to The Woodroffe School and commented that the consultation could have been clearer about the potential changes. Dorset's view is that transport entitlement should not be amended in response to changes to application volumes at a school.

Officers made contact with the school as a key stakeholder during the consultation to ensure that leaders there would be able to review and comment. Officers have assessed the potential impact of catchment transport not being provided to The Woodroffe School as detailed in Appendix B.