

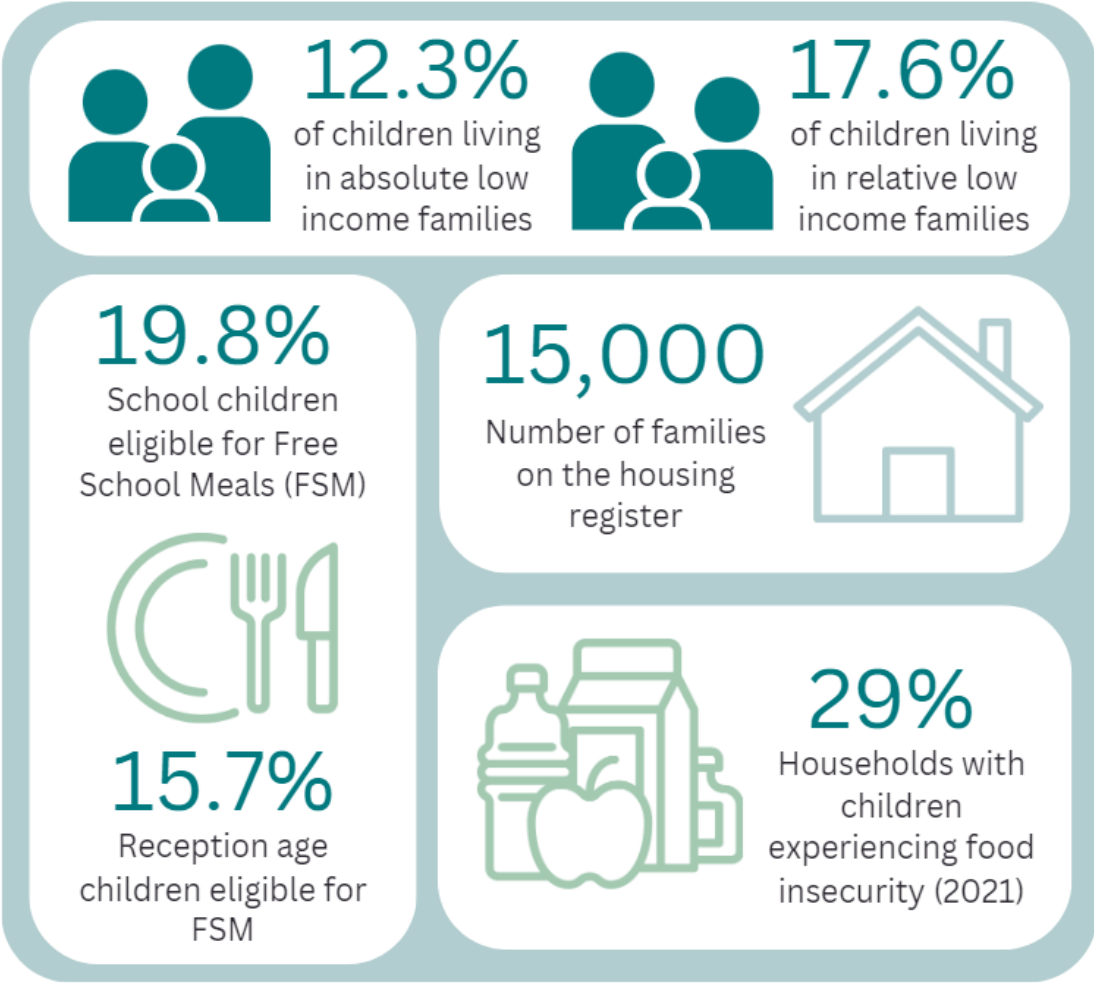


Early Years Strategy for Devon 2024 – 2034

Making Devon the best place to grow up

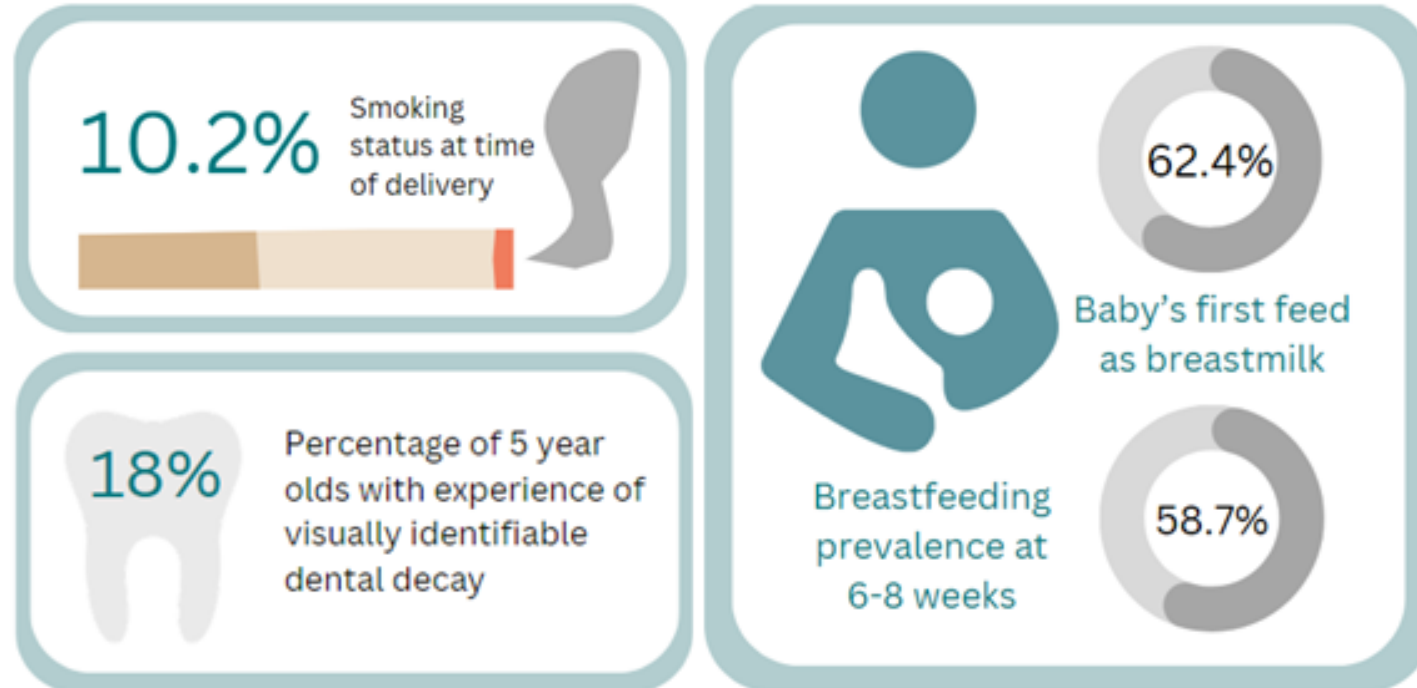
Health and Wellbeing Board
9th January 2025

Deprivation in Devon



Data taken from Public Health Outcomes Framework, June 2024

Health data



Data taken from Public Health Outcomes Framework, June 2024

School readiness

| | | England | South-West | Devon |
|--|----------------|----------------|-------------------|--------------|
| School readiness (% achieving GLD) | 2021/22 | 65.2 | 66.3 | 65.8 |
| | 2022/23 | 67.2 | 68.0 | 67.4 |
| School readiness in children eligible for Free School Meals (% achieving GLD) | 2021/22 | 49.1 | 46.1 | 44.9 |
| | 2022/23 | 51.6 | 47.5 | 47.1 |

Source: DCC 'Starting well' JSNA Headline Report

Early Years Strategy for Devon 2024-2034

Our vision

All children in Devon will have the best possible start in life with happy, healthy, and safe childhoods, to realise their full potential and thrive.

Our aims

Achieve prioritisation



Prioritise the early years across the system

Emphasise prevention



Highlight system-wide benefits of prevention and early intervention

Create sustainability



Collaborate to create a sustainable and resilient Early Years System

Foster connectivity



Work together to create an Early Years System that is connected and aligned

Our strategic priorities

- 1 System connectivity & effectiveness
- 2 Early development & school readiness
- 3 Provision of accessible support
- 4 Workforce wellbeing & development
- 5 **Childcare sufficiency, inclusion, & accessibility**
- 6 Community strengthening

6 Strategic Priorities

1

From conception, parents/carers and their children are supported to fulfil their potential by an effective and connected Early Years System

2

All children have a positive journey through their early years to the end of Reception, and are well supported and ready to start Year 1 in school

3

Families and children are well supported when experiencing stressors, to reduce their burden and the likelihood of adverse outcomes

4

Children's early development and learning is expertly supported by a strong, skilled, knowledgeable and well led Early Years System workforce who always advocate for the safety of all children

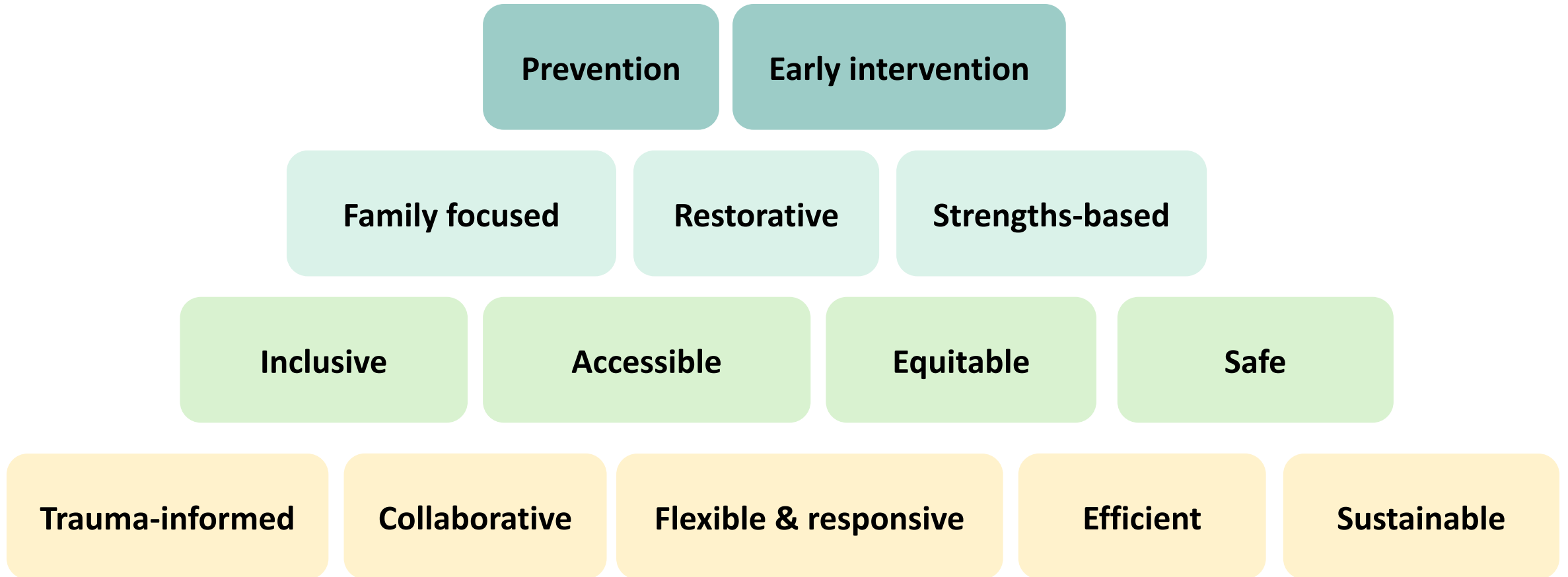
5

Parents can access sufficient, high quality, and fully inclusive childcare places that support early learning and childcare needs

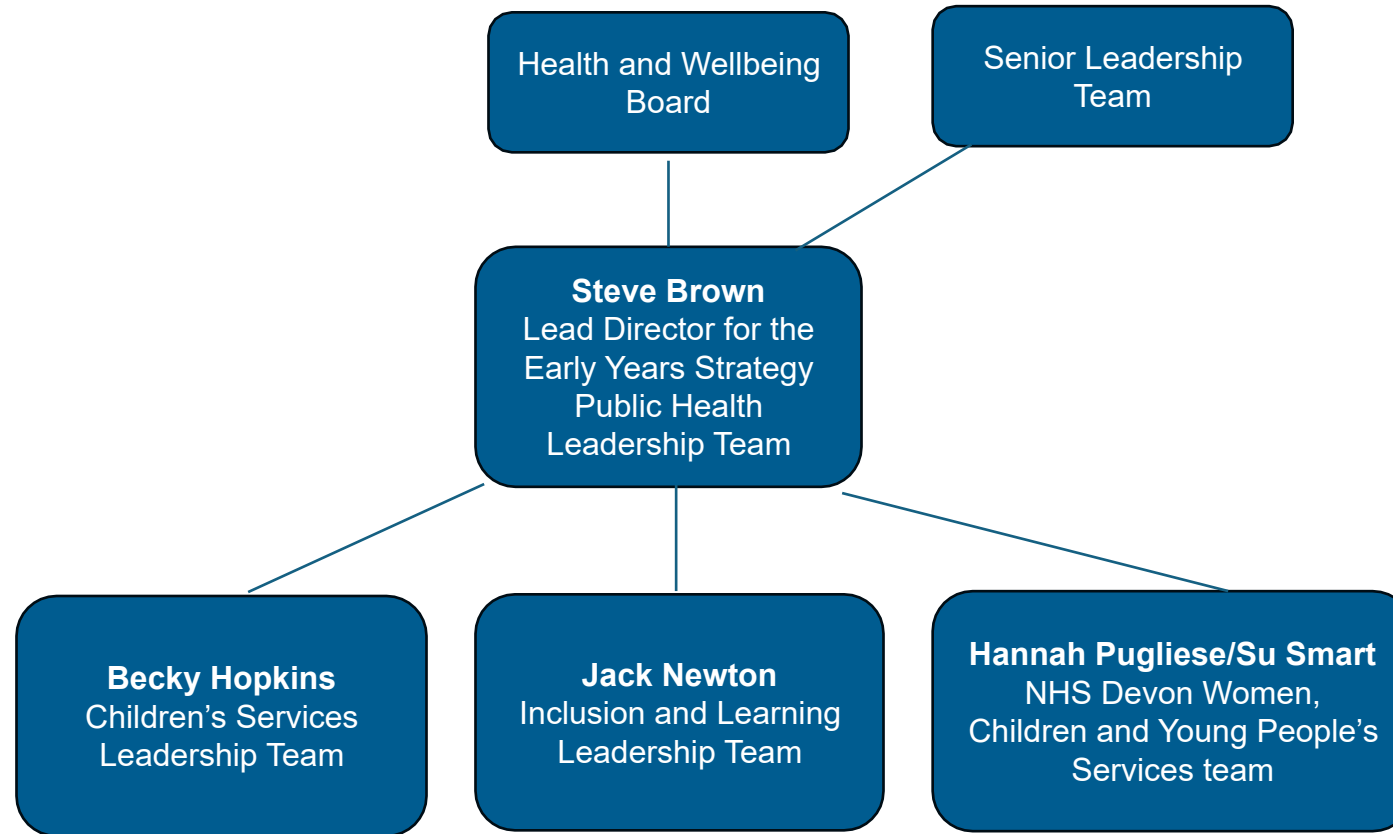
6

Communities are strengthened to enable families to be the best they can be

Guiding principles



Proposed governance structure



Next steps

- Governance arrangements to be agreed
- Strategy to be signed off and published
- Action plan to be developed with partners and stakeholders
- Working group to be set up to take actions forward