

# Devon Sexual Health Needs Assessment

## Devon Health & Wellbeing Board

Thursday 25<sup>th</sup> April 2024

9:30am – 12:30pm

Abenaa Gyamfuah-Assibey - Public Health Commissioning Manager (Sexual Health)

Louise Cox - Senior Public Health Analyst

# Background

- **Sexual Health is an important part of overall health and wellbeing**

## Health Needs Assessment aims to:

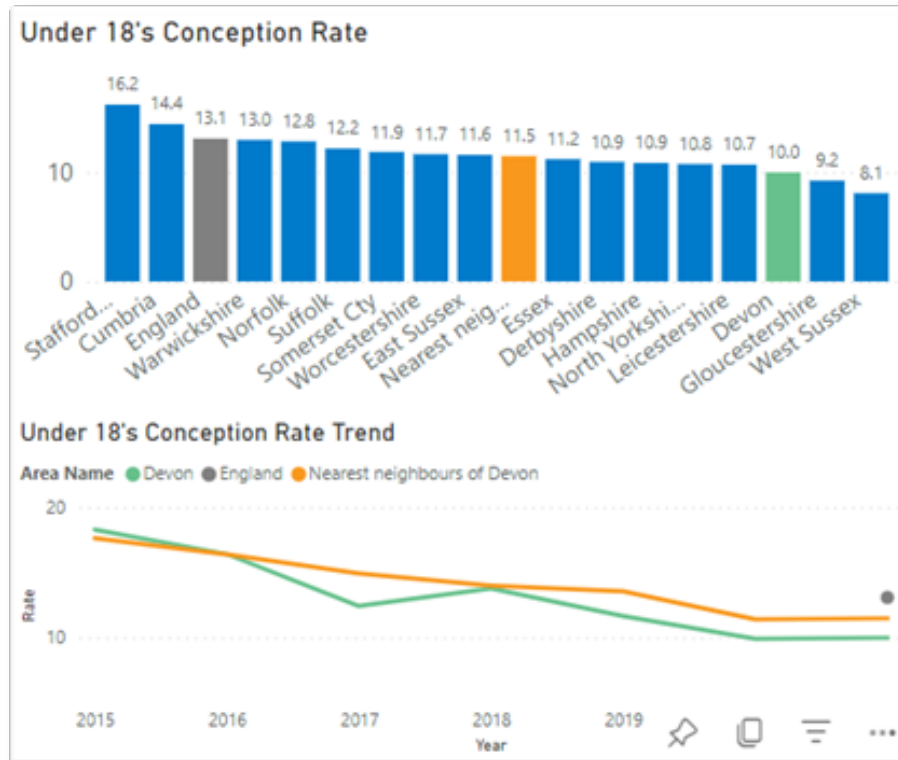
- understand the sexual and reproductive health **needs of the people of Devon**
- Inform future strategy development and **commissioning intentions for 2025**
- Improve sexual health of the local population and **reduce health inequalities**

## Approach

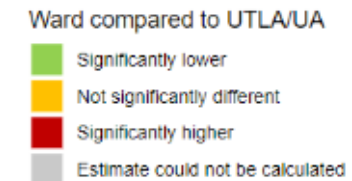
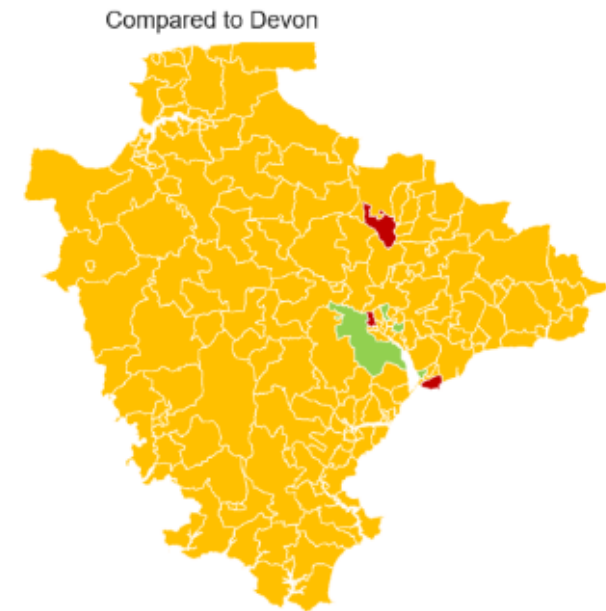
- Review **variations in outcomes** using existing data sources
- Gather **local insights** from key populations and service users

# Key Findings and Challenges

- Devon performs well in regard to teenage conceptions



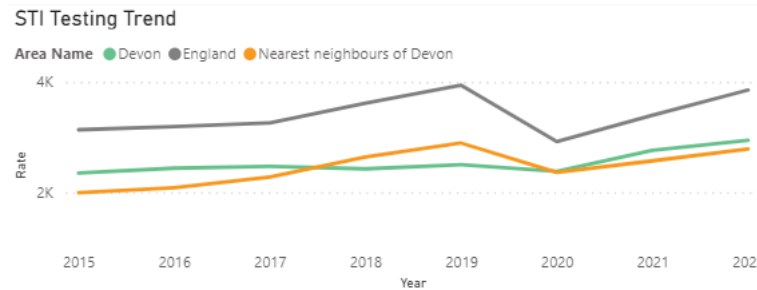
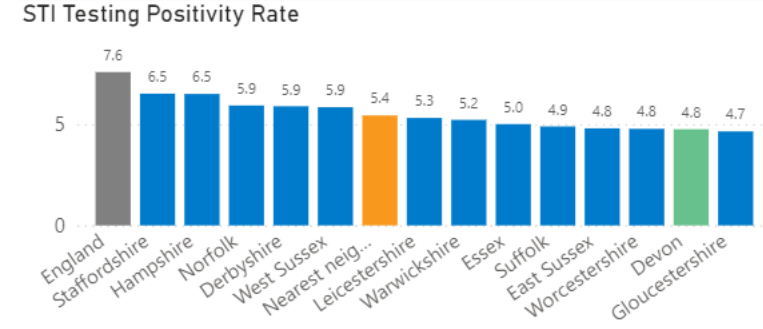
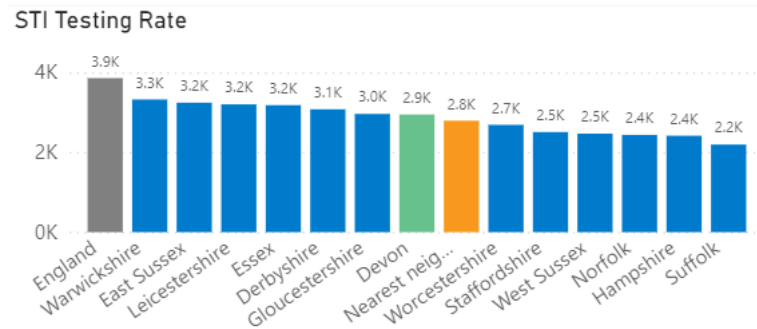
- **Little variation at ward level**, no wards have significantly higher rates than England
- Comparing wards within Devon shows pockets with significantly higher rates in mid and East Devon



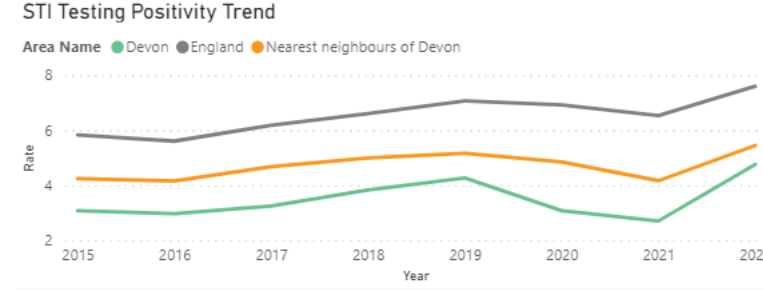
<https://www.devonhealthandwellbeing.org.uk/public-health-dashboards/sexual-health/>

# Key Findings and Challenges

- Sexually Transmitted Infection (STI) testing and diagnosis rates are closely linked
- In Devon we have a **higher than average testing rate combined with a lower than average positivity rate**, this **needs further exploration** to ensure the right people are being tested.



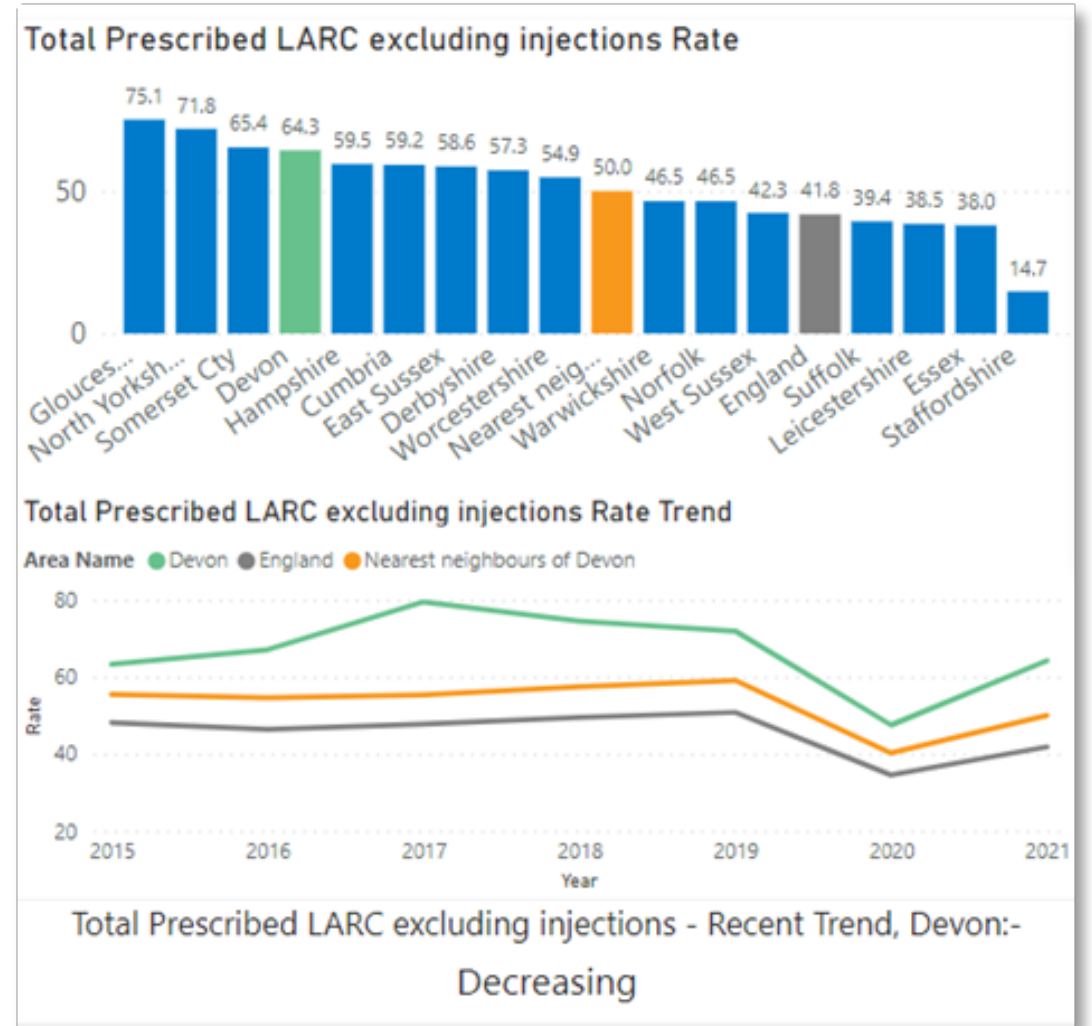
STI Testing - Recent Trend, Devon:-  
Increasing and getting better



STI Testing Positivity - Recent Trend, Devon:-  
No significant change

# Key Findings and Challenges

- The provision of **Long-Acting Reversible Contraception (LARC)** is a proxy measure for wider access to the range of possible contraceptive methods and should also **help reduce rates of unintended pregnancy**.
- **Wide variation in rates** across Primary Care Networks, with **lowest rates in North Devon, Torrington and parts of East Devon**
- Contraception survey themes from service users:
  - Improve **accessibility** (location/hours) needed
  - **Patient choice** – contraception options and availability
  - **Knowledge & training** need, particularly around inclusivity



# Vulnerable and At Risk Groups

## Groups identified

- Substance misuse service users
- People with learning disabilities
- Women at risk of sexual exploitation
- Travelling communities

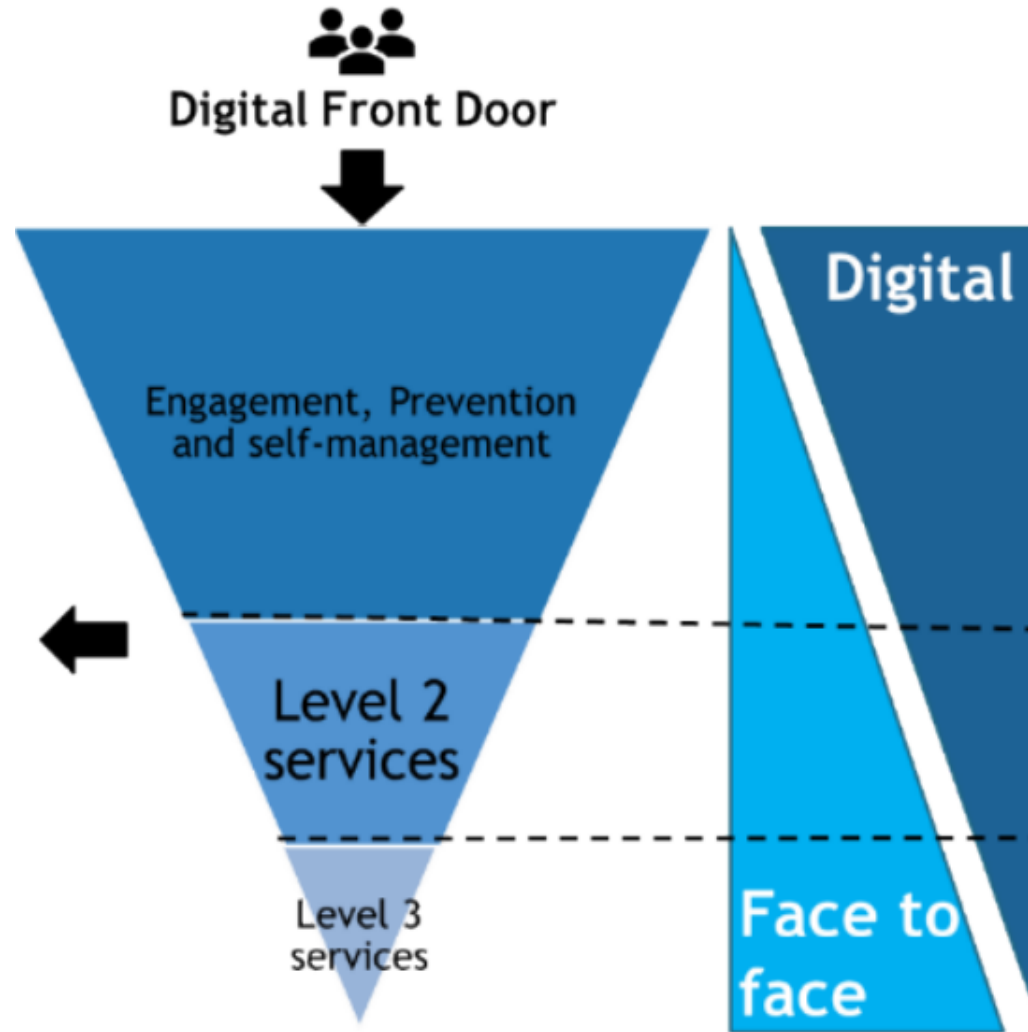
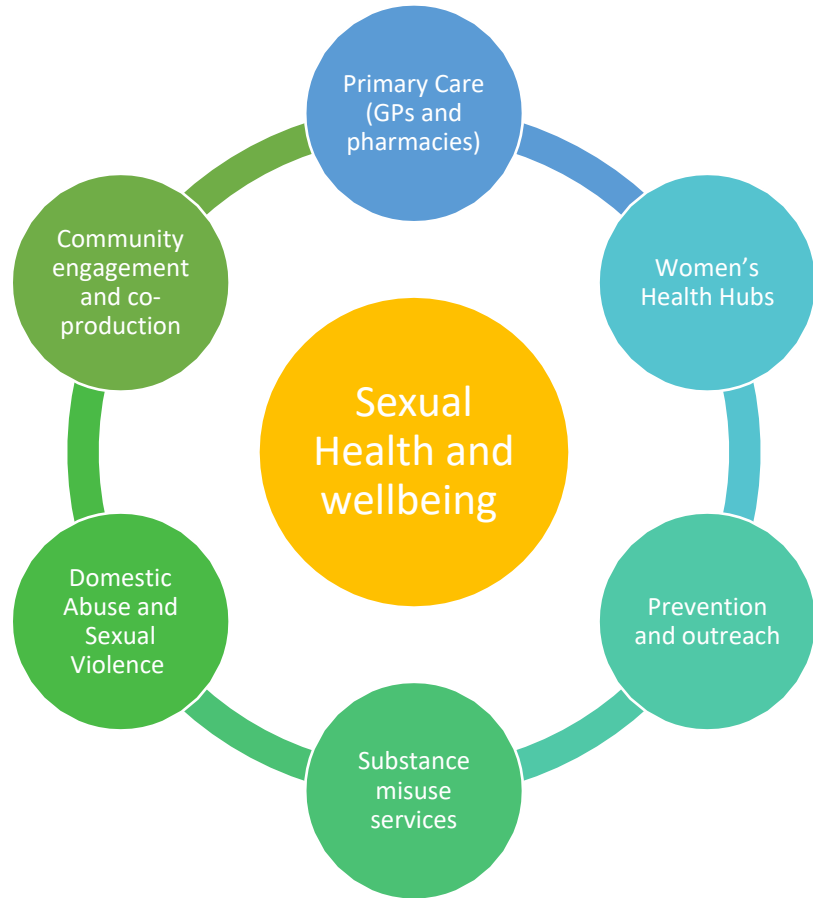
Good Practice  
e.g. Quiet Clinics

Gaps in  
awareness of  
wider sexual  
health system

Variations in  
Sexual health  
training

Barriers to  
access,  
particularly  
traditional  
service  
pathways

# Plans for recommissioning



Thank You