

Devon Health and Wellbeing Board

Outcomes Reporting

January 2020



Health and Wellbeing



Committed to promoting health equality

Introduction

- The H&WB outcomes report monitors priority measures identified in the Joint Health and Wellbeing Strategy (2020-25)
- Purpose of today is to introduce the new outcomes report to the board
- On a quarterly basis updated outcome measures will be presented to the board
- Recommended that the H&WB note the updated H&WB outcomes report

HEALTH AND WELLBEING OUTCOMES REPORT 2020-25

Vision - Health outcomes and health equality in Devon will be amongst the best in the world, and will be achieved by Devon's communities, businesses and organisations working in partnership



Priority and Indicator	Time Period	Devon	SW	Eng	Devon Trend	East Devon	Exeter	Mid Devon	North Devon	South Hams	Taignton	Torridge	West Devon	Deprivation	Value	Guide
1. Create opportunities for all																
GCSE Attainment (Free School Meals)	2018	18.2%	17.7%	21.7%	-	28.2%	21.1%	25.0%	17.9%	26.2%	17.9%	13.2%	16.7%		%	Higher is better
GCSE Attainment	2018	45.0%	43.2%	43.5%	-	48.0%	41.9%	42.3%	36.7%	45.2%	36.2%	28.0%	41.2%		%	Higher is better
Good Level of Development (Free School Meals)	2017/18	45.5%	52.3%	56.8%	↑	40.1%	54.3%	42.2%	40.9%	40.5%	51.1%	53.8%	53.7%		%	Higher is better
Good Level of Development	2017/18	75.7%	71.2%	71.5%	↑	71.5%	68.8%	72.2%	71.1%	76.2%	72.5%	67.2%	75.3%		%	Higher is better
% with NVQ+ (aged 16-64)	2018	40.1%	38.7%	39.0%	↑	38.8%	40.6%	40.3%	30.5%	41.7%	46.4%	33.8%	50.0%		%	Higher is better
% with no qualifications (NVQ) (aged 16-64)	2018	5.3%	5.3%	7.6%	↑	6.5%	4.4%	5.4%	6.2%	2.4%	5.1%	-	5.5%		%	Lower is better
Child Poverty	2016	12.5%	14.0%	17.0%	↑	11.2%	13.4%	11.6%	13.4%	10.5%	12.8%	16.0%	12.3%		%	Lower is better
Not in Education, Employment or Training	2019	6.3%	6.7%	6.0%	-	5.9%	8.5%	6.0%	6.8%	4.8%	6.0%	6.0%	5.7%		%	Lower is better
Gross Value Added - Per Head (Output)	2016	£ 10,840	£ 11,081	£ 27,108	↑	£ 17,348	£ 11,446	£ 16,663	£ 20,029	£ 15,847	£ 16,581	£ 10,894	£ 17,271		£	Higher is better

2. Healthy, safe strong and sustainable communities																
Fuel Poverty	2017	11.8%	10.8%	10.3%	↑	10.3%	11.4%	11.2%	12.8%	11.2%	10.3%	11.2%	12.8%		%	Lower is better
Rough Sleeping	2018	1.5	1.9	2.0	-	0.8	3.2	0.8	2.0	1.8	1.2	0.9	0.0		Rate per 10,000	Lower is better
Dwellings with category one hazards	2014/15	13.4%	13.4%	10.4%	-	16.7%	9.4%	17.3%	17.3%	13.8%	13.4%	26.2%	13.8%		%	Lower is better
Private sector dwellings made free of hazards	2014/15	1.0%	1.0%	1.2%	↑	1.1%	1.7%	1.1%	1.5%	0.4%	1.5%	0.2%	0.5%		%	Higher is better
People who use services who feel safe	2018/19	69.2%	70.0%	70.1%	↑	78.7%	61.7%	68.5%	70.2%	66.7%	72.2%	60.8%	66.7%		%	Higher is better
Proportion of people with poor access to healthy assets	2017	26.3%	18.1%	21.1%	-	17.4%	-	30.7%	23.8%	38.4%	35.7%	44.6%	44.0%		%	Higher is better
Overall rate of crime	2018/19	57.1	67.1	67.3	↑	44.0	64.0	45.0	60.0	41.0	52.0	43.0	40.0		Rate per 1,000	Lower is better

3. Focus on mental health																
Suicide Rate	2016-18	21.1	11.1	9.6	↑	7.0	15.0	12.9	13.0	6.7	12.7	12.8	8.3		Rate per 100,000	Lower is better
Emergency Hospital Admissions for Intentional Self-Harm	2017/18	210.3	260.2	185.5	↑	153.0	208.9	170.2	217.2	194.8	228.1	263.8	183.3		Rate per 100,000	Lower is better
Self-Reported Wellbeing (low happiness score %)	2017/18	6.5%	7.4%	8.2%	↑	-	-	-	-	-	-	-	-		%	Lower is better
Social Connectedness	2017/18	42.8%	40.0%	46.0%	↑	-	-	-	-	-	-	-	-		%	Lower is better
Access to psychological therapies	2017	17.5%	-	18.3%	-	16.8%	20.2%	16.1%	14.8%	13.3%	18.0%	17.3%	15.3%		%	Higher is better

4. Maintain good health for all																
Adults Excess Weight	2017/18	60.1%	61.0%	62.0%	-	55.8%	55.8%	60.2%	64.7%	60.1%	66.7%	66.3%	58.6%		%	Lower is better
Proportion of Physically Active Adults	2017/18	72.8%	70.7%	66.3%	-	77.3%	80.0%	70.8%	69.8%	70.3%	69.7%	72.7%	70.1%		%	Higher is better
Alcohol-Related Admissions	2017/18	804.1	888.7	832.3	↑	534.4	638.3	573.7	742.8	582.8	630.7	643.6	515.7		Rate per 100,000	Lower is better
Alcohol-Specific Admissions in Under 18s	2015-18	83.6	45.8	32.9	↑	85.1	42.5	20.1	40.2	41.6	61.1	37.7	26.7		Rate per 100,000	Lower is better
Fruit and Vegetable Consumption (5-a-day)	2017/18	62.3%	61.2%	54.8%	↑	58.3%	59.6%	61.6%	62.9%	67.9%	64.1%	64.0%	61.6%		%	Higher is better
Mortality Rate from Preventable Causes	2015-18	159.3	167.2	180.3	↑	136.6	133.1	154.3	133.6	137.4	157.5	175.4	157.4		Rate per 100,000	Lower is better
Cancer Diagnosed at Stage 1 or 2	2017	56.1%	53.3%	52.2%	↑	58.5%	58.9%	56.0%	49.3%	57.4%	54.2%	57.1%	56.6%		%	Higher is better
Overall satisfaction of carers with social services	2018/19	38.3%	38.5%	38.6%	-	43.9%	47.1%	50.0%	52.4%	28.0%	36.0%	33.3%	30.0%		%	Higher is better
Feel Supported to Manage Own Condition	2019	84.2%	81.8%	78.4%	-	87.2%	83.5%	83.3%	83.6%	84.3%	82.7%	80.1%	84.6%		%	Higher is better
Re-ablement Services (Effectiveness)	2017/18	82.6%	80.2%	82.9%	↑	77.5%	79.5%	79.3%	76.1%	87.8%	81.9%	87.1%	94.6%		%	Higher is better
Re-ablement Services (Coverage)	2017/18	1.8%	2.8%	2.9%	↑	-	-	-	-	-	-	-	-		%	Higher is better
Injuries Due to Falls	2017/18	1714.5	2096.4	2170.4	↑	1386.1	1745.8	1405.1	1692.2	1780.8	1888.7	1683.2	1708.3		Rate per 100,000	Lower is better
Adult Smoking Prevalence	2018	13.4%	13.3%	14.4%	↑	8.6%	17.2%	13.3%	14.4%	17.3%	14.1%	7.1%	14.3%		%	Lower is better
Estimated Dementia Diagnosis Rate (65+)	2019	36.6%	62.4%	68.7%	↑	64.8%	71.3%	52.2%	63.0%	45.4%	58.1%	58.3%	56.8%		%	Higher is better

Key Symbols
 - Data not available
 # Value missing due to small sample size
 * Change in methodology
 ** National method for calculating Confidence Intervals are being revised
 Most deprived ← → Least deprived

Significance compared to England figure
 Significantly higher
 Not significantly different
 Significantly lower

Trend
 Worsening trend
 Static trend
 Improving trend
 Not enough data

HEALTH AND WELLBEING OUTCOMES REPORT 2020-25

Vision - Health outcomes and health equality in Devon will be amongst the best in the world, and will be achieved by Devon's communities, businesses and organisations working in partnership

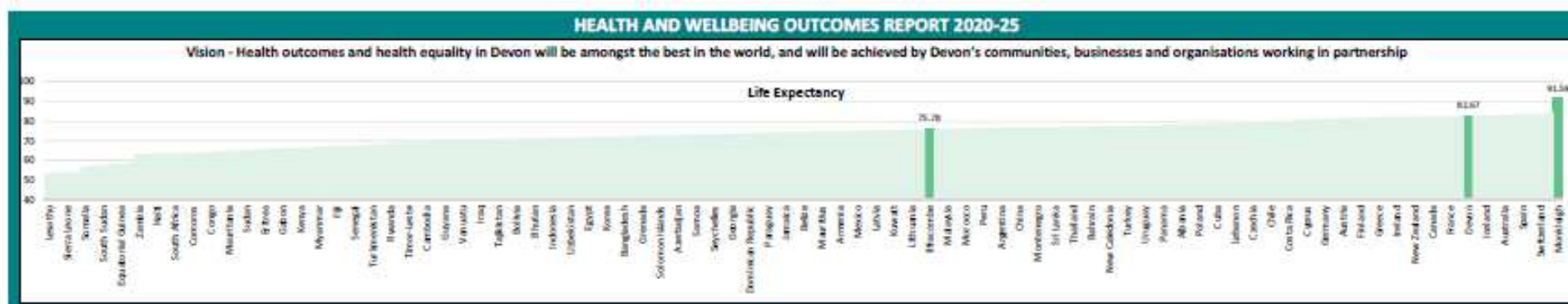


Priority and Indicator	Time Period	Devon	SW	Eng	Devon Trend	East Devon	East	Mid Devon	North Devon	South Devon	Taunton/Exmouth	Torbay	West Devon	Expenditure per person per year	Value	Guide
1. Create opportunities for all																
GCSE Attainment (Free School Meals)	2018	58.2%	58.2%	58.2%	25.7%	58.2%	58.2%	58.2%	58.2%	58.2%	58.2%	58.2%	58.2%	100	58.2%	Higher is better
GCSE attainment	2018	58.2%	58.2%	58.2%	43.5%	58.2%	58.2%	58.2%	58.2%	58.2%	58.2%	58.2%	58.2%	100	58.2%	Higher is better
Good Level of Development (Free School Meals)	2017/18	58.2%	58.2%	58.2%	56.6%	58.2%	58.2%	58.2%	58.2%	58.2%	58.2%	58.2%	58.2%	100	58.2%	Higher is better
Good Level of Development	2017/18	58.2%	58.2%	58.2%	73.3%	58.2%	58.2%	58.2%	58.2%	58.2%	58.2%	58.2%	58.2%	100	58.2%	Higher is better
% with NVQ3+ (aged 16-64)	2018	41.1%	41.1%	41.1%	39.0%	41.1%	41.1%	41.1%	41.1%	41.1%	41.1%	41.1%	41.1%	100	41.1%	Higher is better
% with no qualifications (NVQ) (aged 16-64)	2018	58.9%	58.9%	58.9%	7.0%	58.9%	58.9%	58.9%	58.9%	58.9%	58.9%	58.9%	58.9%	100	58.9%	Lower is better
Child Poverty	2016	31.1%	31.1%	31.1%	1.7%	31.1%	31.1%	31.1%	31.1%	31.1%	31.1%	31.1%	31.1%	100	31.1%	Lower is better
Wid in Education, Employment or Training	2018	60.3%	60.3%	60.3%	6.0%	60.3%	60.3%	60.3%	60.3%	60.3%	60.3%	60.3%	60.3%	100	60.3%	Lower is better
Gross Value Added - Per Head (Output)	2016	27,103	27,103	27,103	27,103	27,103	27,103	27,103	27,103	27,103	27,103	27,103	27,103	100	27,103	Higher is better
2. Healthy, safe strong and sustainable communities																
Child Poverty	2017	10.8%	10.8%	10.8%	10.8%	10.8%	10.8%	10.8%	10.8%	10.8%	10.8%	10.8%	10.8%	100	10.8%	Lower is better
Single Housing	2018	2.3	2.3	2.3	2.3	2.3	2.3	2.3	2.3	2.3	2.3	2.3	2.3	100	2.3	Lower is better
Housing with category one repairs	2014/15	10.4%	10.4%	10.4%	10.4%	10.4%	10.4%	10.4%	10.4%	10.4%	10.4%	10.4%	10.4%	100	10.4%	Lower is better
Private sector dwellings made free of hazards	2014/15	1.3%	1.3%	1.3%	1.3%	1.3%	1.3%	1.3%	1.3%	1.3%	1.3%	1.3%	1.3%	100	1.3%	Higher is better
People who can services who feel safe	2016/17	70.4%	70.4%	70.4%	70.4%	70.4%	70.4%	70.4%	70.4%	70.4%	70.4%	70.4%	70.4%	100	70.4%	Higher is better
Percentage of people with poor access to healthy areas	2017	18.1%	18.1%	18.1%	18.1%	18.1%	18.1%	18.1%	18.1%	18.1%	18.1%	18.1%	18.1%	100	18.1%	Higher is better
Overall rate of crime	2016/17	67.3	67.3	67.3	67.3	67.3	67.3	67.3	67.3	67.3	67.3	67.3	67.3	100	67.3	Lower is better
3. Reduce preventable deaths																
Infant Rate	2016-18	9.6	9.6	9.6	9.6	9.6	9.6	9.6	9.6	9.6	9.6	9.6	9.6	100	9.6	Lower is better
Emergency Hospital Admissions for Intentional Self-Harm	2017/18	195.5	195.5	195.5	195.5	195.5	195.5	195.5	195.5	195.5	195.5	195.5	195.5	100	195.5	Lower is better
Self-Reported Wellbeing (five happiness score %)	2017/18	8.2%	8.2%	8.2%	8.2%	8.2%	8.2%	8.2%	8.2%	8.2%	8.2%	8.2%	8.2%	100	8.2%	Lower is better
Local Cancer Rates	2017/18	46.0%	46.0%	46.0%	46.0%	46.0%	46.0%	46.0%	46.0%	46.0%	46.0%	46.0%	46.0%	100	46.0%	Lower is better
Access to green biological blue space	2018	1.8	1.8	1.8	1.8	1.8	1.8	1.8	1.8	1.8	1.8	1.8	1.8	100	1.8	Higher is better
4. Maintain good health for all																
Adults Screened	2017/18	62.0%	62.0%	62.0%	62.0%	62.0%	62.0%	62.0%	62.0%	62.0%	62.0%	62.0%	62.0%	100	62.0%	Higher is better
Proportion of Physically Active Adults	2017/18	66.0%	66.0%	66.0%	66.0%	66.0%	66.0%	66.0%	66.0%	66.0%	66.0%	66.0%	66.0%	100	66.0%	Higher is better
Respiratory Admissions	2017/18	63.1	63.1	63.1	63.1	63.1	63.1	63.1	63.1	63.1	63.1	63.1	63.1	100	63.1	Lower is better
Respiratory Admissions in Under 16s	2015-18	32.9	32.9	32.9	32.9	32.9	32.9	32.9	32.9	32.9	32.9	32.9	32.9	100	32.9	Lower is better
Fruit and Vegetable Consumption (5-a-day)	2017/18	54.8%	54.8%	54.8%	54.8%	54.8%	54.8%	54.8%	54.8%	54.8%	54.8%	54.8%	54.8%	100	54.8%	Higher is better
Mortality Rate from Preventable Causes	2016-18	181.0	181.0	181.0	181.0	181.0	181.0	181.0	181.0	181.0	181.0	181.0	181.0	100	181.0	Lower is better
Cancer Diagnosed at Stage 1 or 2	2017	56.1%	56.1%	56.1%	56.1%	56.1%	56.1%	56.1%	56.1%	56.1%	56.1%	56.1%	56.1%	100	56.1%	Higher is better
Overall satisfaction of cancer with cancer services	2016/17	66.6%	66.6%	66.6%	66.6%	66.6%	66.6%	66.6%	66.6%	66.6%	66.6%	66.6%	66.6%	100	66.6%	Higher is better
Feel supported to manage own condition	2018	78.4%	78.4%	78.4%	78.4%	78.4%	78.4%	78.4%	78.4%	78.4%	78.4%	78.4%	78.4%	100	78.4%	Higher is better
Re-assessment Services (Prevention)	2017/18	62.9%	62.9%	62.9%	62.9%	62.9%	62.9%	62.9%	62.9%	62.9%	62.9%	62.9%	62.9%	100	62.9%	Higher is better
Re-assessment Services (Coverage)	2017/18	2.0%	2.0%	2.0%	2.0%	2.0%	2.0%	2.0%	2.0%	2.0%	2.0%	2.0%	2.0%	100	2.0%	Higher is better
Injuries due to falls	2017/18	1170.4	1170.4	1170.4	1170.4	1170.4	1170.4	1170.4	1170.4	1170.4	1170.4	1170.4	1170.4	100	1170.4	Lower is better
Adult Smoking Prevalence	2018	14.4%	14.4%	14.4%	14.4%	14.4%	14.4%	14.4%	14.4%	14.4%	14.4%	14.4%	14.4%	100	14.4%	Lower is better
Estimated Dementia Diagnosis Rate (EDR)	2018	68.1%	68.1%	68.1%	68.1%	68.1%	68.1%	68.1%	68.1%	68.1%	68.1%	68.1%	68.1%	100	68.1%	Higher is better
Key Symbols																
Significance compared to England figure																
Trend																
Worsening trend																
Stable trend																
Improving trend																
Not enough data																
Data not available																
Value missing due to small sample size																
Change in methodology																
National method for calculating Confidence Intervals are being revised																
Not reported - Small reported																

Health and Wellbeing



Committed to promoting health equality



- To reflect our vision in the JHWS 2020-25, included some international context

[illegible]

Priority and Indicator	Time Period	Devon	SW	Eng	Devon Trend	East Devon	Exeter	Mid Devon	North Devon	South Hams	Taigbridge	Torridge	West Devon	Deprivation M10 0 100	Value	Guide
1. Create opportunities for all																
GCSE Attainment (Free School Meals)	2018	55.2%	17.7%	21.7%	-	28.2%	23.1%	25.0%	17.9%	18.2%	17.5%	33.2%	16.7%		%	Higher is better
GCSE Attainment	2018	41.2%	43.2%	48.5%	-	48.0%	41.3%	45.3%	36.7%	45.2%	38.2%	28.0%	41.2%		%	Higher is better
Good Level of Development (Free School Meals)	2017/18	49.5%	52.8%	56.6%	↑	49.1%	54.3%	62.2%	46.3%	40.5%	51.1%	51.8%	53.7%		%	Higher is better
Good Level of Development	2017/18	71.7%	71.2%	71.5%	↑	71.5%	68.8%	72.2%	73.1%	76.2%	71.5%	67.2%	71.5%		%	Higher is better
% with NVQ4+ (aged 16-64)	2018	40.1%	18.7%	39.0%	↑	35.8%	40.8%	40.3%	38.0%	45.7%	46.4%	31.8%	50.0%		%	Higher is better

- **Priority and indicator name**
 - Create opportunities for all
 - Healthy, safe strong and sustainable communities
 - Focus on mental health
 - Maintain good health for all
- **Time period**
- **Different geography levels**
- **Tartan rug effect** (significance compared to England average)
- **Devon trend**
- **Deprivation**
- **Value**
- **Guide**

Outcome measures

(Significantly worse compared to England)

- GCSE attainment
- Good level of development
- Not in education, employment or training
- GVA per head
- Fuel poverty
- Dwellings with category 1 hazards
- Suicide rate
- Emergency admissions for self-harm
- Alcohol specific admissions in under 18s
- Reablement (coverage)
- Estimated dementia diagnosis rate (65+)

Outcome measures

(Other important points to note)

- Value for Devon alone may mask the inequalities within this large footprint
- Considerable variation across district areas which presents opportunities to improve outcomes
- Some priority areas present more challenge particularly across more upstream indicators
- Devon trend identifies outcome measures that:
 - Are emerging challenges
 - Challenges that continue to remain the same
 - Improving challenges
- Collectively many of these outcome indicators represent the wider determinants, of which many are within our gift in the local authority to influence

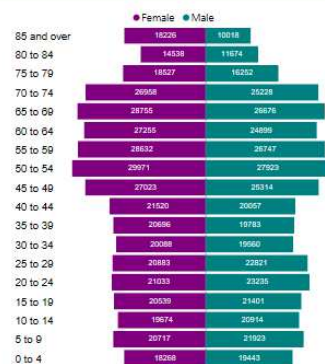
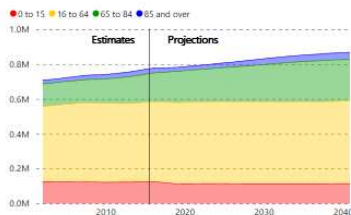
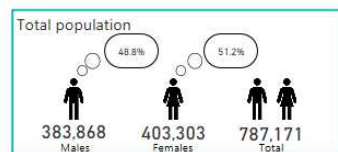


To support outcomes report

- Topic overviews
- JSNA resources
 - Headline 'Explanatory' Tool
 - 'Exploratory Tool'
 - Health Needs Assessments
 - Annual Public Health Report

Explanatory Headline Tool

Population Devon - County Council area



- Home
- Population
- Deprivation
- Starting well
- Living well
- Ageing well
- Asset Map
- Population Character...
- Survey Insights
- Definitions
- Contact Us



Deprivation Devon - County Council area

Indices of Multiple Deprivation



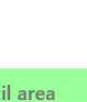
Income



Employment



Education



For more information, please see the [English indices of deprivation website](#)

Decile 1 - 10% most deprived areas nationally
Decile 10 - 10% least deprived areas nationally
IDACI - Income deprivation affecting children index
IDAOP - Income deprivation affecting older people index

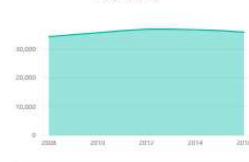
Related content available from the Devon Health and Wellbeing website - [Library](#)

- Home
- Population
- Deprivation
- Starting well
- Living well
- Ageing well
- Asset Map
- Population Character...
- Survey Insights
- Definitions
- Contact Us

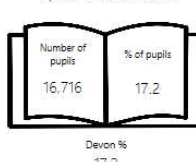


Starting well Devon - County Council area

Birth count



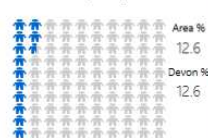
Special Education Needs



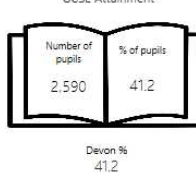
Injury admissions (0-14yrs)



Child poverty



GCSE Attainment



Self-harm admissions (10-24 yrs)



- Home
- Population
- Deprivation
- Starting well
- Living well
- Ageing well
- Asset Map
- Population Character...
- Survey Insights
- Definitions
- Contact Us



Well

Living well Devon - County Council area

Claimant count %



Houses classed as fuel poor %



Lifestyle behaviours %



Not in employment, education or training %



Mental health estimates (count)



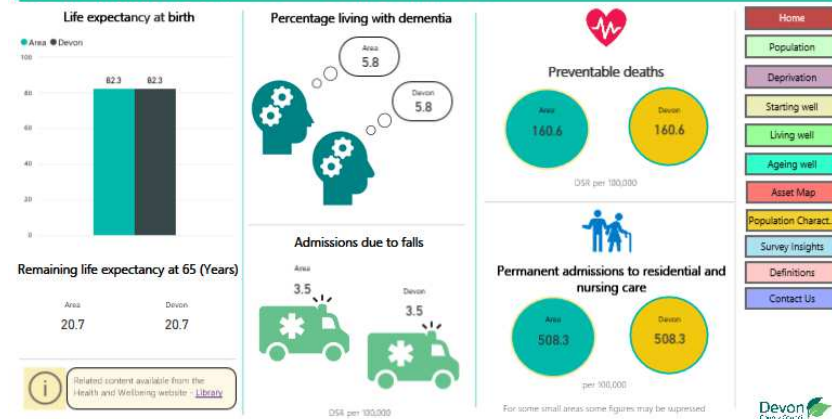
Related content available from the Health and Wellbeing website - [Library](#)

- Home
- Population
- Deprivation
- Starting well
- Living well
- Ageing well
- Asset Map
- Population Character...
- Survey Insights
- Definitions
- Contact Us

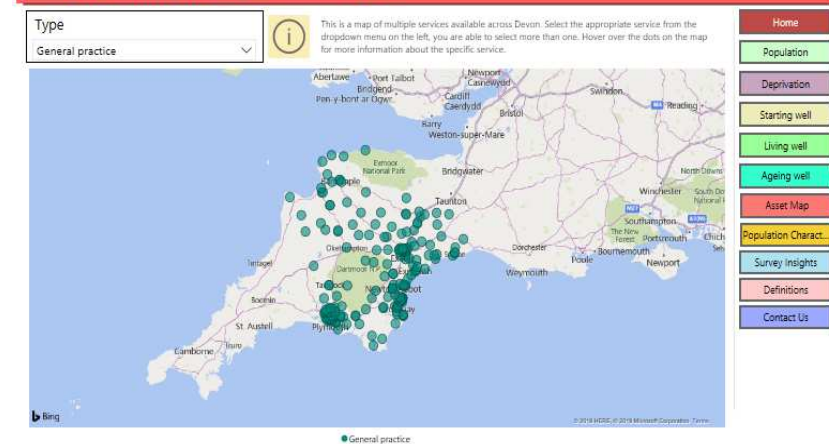


Explanatory Headline Tool

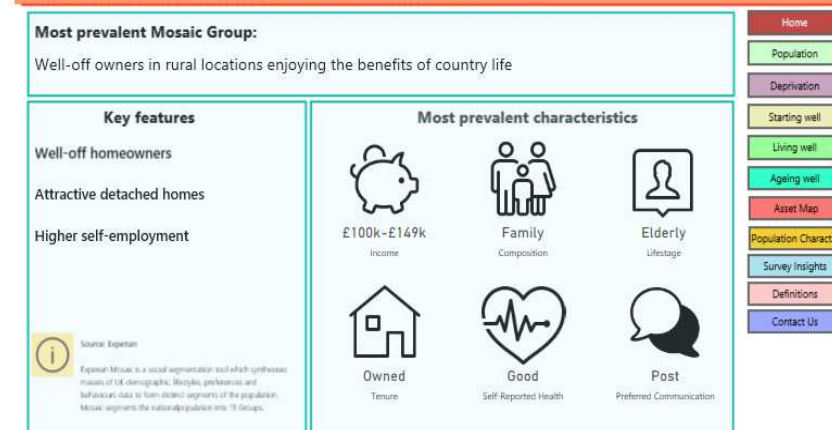
Ageing and Dying well Devon - County Council area



Asset Map of Devon (last updated November 2019)



Population Characteristics Devon - County Council area



Survey Insights

Please select an area

Watch this space!
Currently in development



We

Committed to promoting health equality

Exploratory Tool (Comparative)

Indicator	Period	England	South Hams	Allington & Strete	Bickleigh & Cornwood	Blackawton & Stoke Fleming	Charterlands	Dartington & Staverton	Dartmouth & East Dart	Ermington & Ugborough	Hybridge East	Hybridge West	Kingsbridge	Loddiswell & Avelton Gifford	Marrion & Littlehempston	Newton & Yealmpton	Salcombe & Thurlestone	South Brent
Emergency hospital admissions for all causes, all ages, standardised admission ratio	2013/14 - 17/18	100.0	78.3	72.1	83.7	73.6	73.4	74.8	81.4	75.8	80.5	80.5	87.7	73.8	77.1	73.7	75.5	76.2
Emergency hospital admissions for coronary heart disease, standardised admission ratio	2013/14 - 17/18	100.0	68.7	63.7	68.1	62.7	69.0	58.0	62.1	68.4	82.4	82.4	79.8	61.9	61.9	69.5	69.5	65.3
Emergency hospital admissions for stroke, standardised admission ratio	2013/14 - 17/18	100.0	88.4	81.5	75.1	84.1	86.4	88.6	97.9	80.7	92.6	92.6	98.3	91.3	91.6	79.2	94.4	81.0
Emergency hospital admissions for Myocardial Infarction (heart attack), standardised admission ratio	2013/14 - 17/18	100.0	68.1	70.8	67.0	68.9	62.5	69.6	66.0	63.4	87.2	87.2	65.6	65.4	62.4	63.9	57.6	65.4
Emergency hospital admissions for Chronic Obstructive Pulmonary Disease (COPD), standardised admission ratio	2013/14 - 17/18	100.0	47.8	36.9	43.6	39.0	38.2	35.3	61.1	34.7	65.2	65.2	63.5	35.2	42.4	36.6	32.8	33.7
Incidences of all cancers, standardised incidence ratio	2012 - 16	100.0	98.5	101.8	100.5	100.9	88.6	99.0	93.0	97.3	96.3	96.3	94.2	95.9	99.5	94.4	101.4	100.7
Incidence of breast cancer, standardised incidence ratio	2012 - 16	100.0	97.9	91.5	87.2	96.0	107.4	106.3	92.4	107.9	100.8	100.8	67.7	103.8	104.7	108.9	92.6	107.6

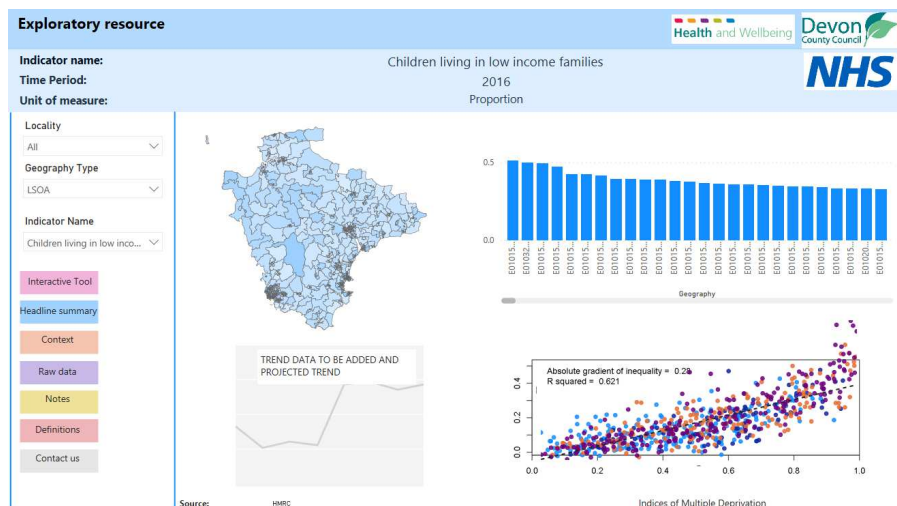


Health and Wellbeing



Committed to promoting health equality

Exploratory Tool (Investigative)



Child Poverty

Summary

- Child poverty has a decreasing trend across Devon.
- Latest data shows that child poverty for Devon is 11.3%. This is significantly lower compared to the England average of xx%.
- Within Devon, the highest child poverty rate is located in AREA 1 in TOWN 1. The lowest child poverty rate is located in AREA 2 in TOWN 2.
- Child poverty rates in Devon have a moderate correlation with the Indices of Multiple Deprivation.

Risk factors

Take me to:

Interactive Tool | Headline summary | Context | Raw data | Notes | Definitions | Contact us

Child Poverty	
<p>Why is this a Public Health Issue?</p> <p>Children living in poverty suffer from poorer physical and mental health which can also affect their life course trajectories.</p> <p>Rates of child poverty are higher in younger families due to higher benefit claimant rates and lower incomes in persons aged between 20 and 30 years. Single parent households, particularly where headed by a female, are also more like to experience economic poverty, as are children of disabled parents.</p>	<p>What does the evidence suggest?</p> <p>This section will include what evidence there is available.</p>
<p>What work is happening in Devon to tackle this issue?</p> <p>This section would include information around what work is currently happening in Devon to tackle this issue.</p> <p>It could also be mentioned here whether Child Poverty is a priorities according to the JHWS.</p>	<p>Related resources</p> <p>This section would detail what related resources there are to child poverty such as hea needs assessments, strategies and other documents.</p>
Page updated: 13/12/2019	

Raw data view

This section provides the raw data which is used in this Health Equity Tool. Please credit Devon Public Health Intelligence team when reusing this data.

Group	Group Type	Indicator	Value
Achieving neighbourhoods	ONS Area Classification Group	Acute Morbidity	100.04
Affluent communities	ONS Area Classification Group	Acute Morbidity	96.50
Ageing rural neighbourhoods	ONS Area Classification Group	Acute Morbidity	96.03
Ageing suburbanites	ONS Area Classification Group	Acute Morbidity	98.62
Ageing urban communities	ONS Area Classification Group	Acute Morbidity	106.94
Ashburton-Buckfastleigh	Town	Acute Morbidity	106.19
Aspiring urban households	ONS Area Classification Group	Acute Morbidity	108.81
Axminster	Town	Acute Morbidity	88.03
Barnstaple	Town	Acute Morbidity	117.26
Barnstaple Alliance	PCN	Acute Morbidity	117.26
Baywide	PCN	Acute Morbidity	113.43
Beacon Medical Group	PCN	Acute Morbidity	105.51
Bideford-Northam	Town	Acute Morbidity	109.95
Braunton	Town	Acute Morbidity	101.95
Brixham & Paignton	PCN	Acute Morbidity	119.23
Challenged white communities	ONS Area Classification Group	Acute Morbidity	139.30
City	PCN	Acute Morbidity	126.47
Coastal	PCN	Acute Morbidity	103.11
Comfortable neighbourhoods	ONS Area Classification Group	Acute Morbidity	108.45

Useful Links

- Full outcomes report available at:
<http://www.devonhealthandwellbeing.org.uk/jsna/health-and-wellbeing-outcomes-report/>
- JSNA Headline tool:
<https://www.devonhealthandwellbeing.org.uk/jsna/profiles/jsna-headline-tool/>
- Joint Health and Wellbeing strategy:
 - Print version:
<https://devoncc.sharepoint.com/:b:/s/PublicDocs/PublicHealth/ERl2qaV25ctDh8-lc06zFfgBiQGrgfBwS2Wwgq1Vo-bZbw?e=IQNdW0>
 - Story map version:
<https://dcc.maps.arcgis.com/apps/Cascade/index.html?appid=a57ef336552c4124b26420c4a604e4cd>
 - Easy read version:
http://www.learningdisabilitydevon.org.uk/?page_id=2355&preview=true



Health and Wellbeing



Committed to promoting health equality