

Introduction to Communities, Public Health, Environment and Prosperity

Report of the Chief Officer for Communities, Public Health, Environment and Prosperity

1. Summary

This report provides an introduction to the County Council's division of Communities, Public Health, Environment and Prosperity (CoPHEP) and identifies areas of business the Scrutiny Committee may wish to consider adding to their work programme.

2. Introduction

In November 2016, following agreement on a new organisational structure, the County Council's management structure changed to create two new place-based divisions: one which largely covers delivery responsibilities (Highways Infrastructure and Waste), and the other covering the diverse range of strategic and planning aspects of "place" (Communities, Public Health, Environment and Prosperity).

The prime function of Communities, Public Health, Environment and Prosperity is to develop Devon as "the best place to be" – that our citizens live in safe, strong and supportive communities, living healthy lives, in an environment that is sensitively developed to meet future needs and where our coast, countryside and heritage is protected, and where skills and employment are developed to increase the prosperity of Devon (Figure 1). All these four elements are interrelated – for example, income is the greatest determinant of health – and all have an impact on services required for children and adults. This report covers each of the four service areas in more detail.

Figure 1: Graphic illustrating the relationship between the four service areas



3. Communities

The Communities team have responsibility for functions and services relating to Devon's communities. The team are currently preparing a strategy to support Devon's communities. As well as community liaison responsibilities, the team also have responsibility for vulnerable communities such as gypsies and travellers, those at risk of domestic and sexual violence and abuse, and for work to improve the mental health of communities and prevent suicide. Services funded by the team include Libraries Unlimited, DYS Space (youth services), Heritage services, and grants to voluntary sector groups such as Citizens Advice Bureaux. Hosted services include Active Devon. Other community functions include administration of the Devon Strategic Partnership, and Members' Locality Budgets. The Council's statutory responsibility for community safety is discharged by the team, including leading the Safer Devon Partnership, which includes public protection responsibilities under CONTEST and PREVENT, and the statutory duty to undertake Domestic Homicide Reviews. The team lead the work on the Armed Forces Covenant and the Devon Armed Forces Community Wellbeing Partnership.

4. Public Health

Public Health became part of local authorities in 2013 under the Health and Social Care Act 2012. The Director of Public Health is appointed jointly by Public Health England on behalf of the Secretary of State for Health, and discharges the Council's statutory responsibilities to improve the health of the population, reduce health inequality, and to ensure that plans are in place to protect the health of the population. The Council's emergency planning, preparedness and response functions are part of the team. The Council receives an annual ring-fenced public health grant to meet a number of statutory requirements for the provision of specific public health services and to provide specialist public health support to NHS Clinical Commissioning Groups. Commissioned services include the healthy lifestyle service (*One Small Step*), sexual health services, drug and alcohol treatment services, 0-19 Public Health Nursing services, the National Childhood Measurement Programme, and the NHS Health Checks programme. The Director of Public Health is required by law to write an independent annual report on the health of the population, and the Council is required by law to publish it. The Public Health team provides intelligence, survey and research functions through the public health intelligence team and the communities intelligence team, and leads the production of the statutory Joint Strategic Needs Assessment and the Joint Health and Wellbeing Strategy for the Health and Wellbeing Board. Devon County Council is an accredited training location for postgraduate Public Health Speciality Registrars and also contribute to the undergraduate training at Exeter Medical School.

5. Planning, Transportation and Environment

Covering a wide range of responsibilities, the Planning, Transportation and Environment service area is responsible for place-based infrastructure and transportation planning and the protection and resilience of our environment. The service area comprises the following areas of (mostly statutory) work, some of which is undertaken jointly with other service areas, which is working well:

- Strategic planning for growth and associated transport and infrastructure provision
- School admissions, infrastructure planning and pupil transportation
- Minerals and waste planning
- Planning and highways development management (including highway adoption)
- Transport coordination (including public transport)
- Road safety and sustainable travel
- Protection of the natural and historic environment (including environmental "partnerships" "such as the Local Nature Partnership")
- Flood and coastal risk management

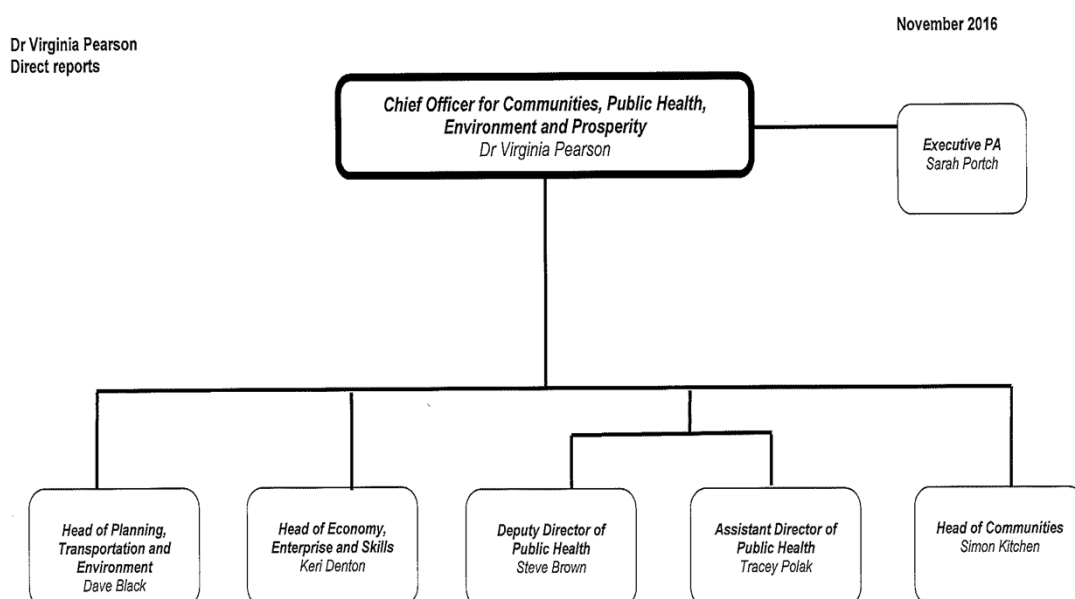
6. Economy, Enterprise and Skills

Working closely with the Heart of the South West Local Enterprise Partnership, the service area of Economy Enterprise and Skills covers the following areas:

- Stimulating local enterprise, supporting business growth, developing workspace, attracting inward investment, developing key sectors and facilitating innovation
- Delivery of the Devon, Somerset and Torbay Trading Standards Service, including *Buy With Confidence*
- Economic Policy and Analysis to influence funding agencies and regional and national policies, including responsibility for the statutory Local Economic Assessment
- Economic infrastructure and development including strategic employment sites, e.g. Skypark and the Science Park, Superfast Broadband, Mobile Coverage, Energy and District Heating networks and implementing an Enterprise Zone.
- Post-16 skills provision and performance including apprenticeships, supported internships, careers advice and guidance and supporting employer engagement with training providers
- Improving employment opportunities through adult education (*Learn Devon*), delivering basic and intermediate skills and mentoring activities, supporting career progression and re-training of our local workforce
- Labour Market development and workforce development, working with a range of partners to support retaining local talent and supporting businesses with the skills they need to grow and thrive

7. Management structure

The Chief Officer is the statutory Director of Public Health, who has five direct management reports (Figure 2):



8. Areas for potential Scrutiny

The Committee may wish to consider further the following areas:

Communities

Communities strategy
Voluntary and community services infrastructure
Heritage services

Planning, Transportation and Environment

Flood risk management
Environmental performance

Economy, Enterprise and Skills

Local Enterprise Partnership
Skills and employment activities for young people and adults
Business growth and support
Trading standards

Dr Virginia Pearson
Chief Officer for Communities, Public Health, Environment and Prosperity

Electoral Divisions: All

Cabinet Member for Community, Public Health, Environment and Prosperity: Councillor Roger Croad
Cabinet Member for Economy and Skills: Councillor Stuart Barker
Cabinet Member for Children's Services and Schools: Councillor James McInnes
Cabinet Member for Resources and Asset Management: Councillor John Clatworthy
Cabinet Member for Adult Social Care and Health Services: Councillor Andrew Leadbetter
Cabinet Member for Highway Management: Councillor Stuart Hughes
Cabinet Member for Infrastructure Development & Waste: Councillor Andrea Davis

Local Government Act 1972: List of Background Papers

Contact for enquiries: Dr Virginia Pearson

Room No. 142, County Hall Main Building, County Hall, Topsham Road, Exeter, EX2 4QD

Tel No: (01392) 383000

| Background Paper | Date | File Reference |
|-------------------------------------|----------|--|
| Public Health Annual Report 2016-17 | May 2017 | www.devonhealthandwellbeing.org.uk\aphr\ |