

## Pedestrian Crossing, Deaf Academy, Exmouth

### Report of the Director of Climate Change, Environment and Transport

---

Please note that the following recommendations are subject to consideration and determination by the Committee before taking effect.

---

#### **1) Recommendation**

That the Committee be asked to:

- (a) approve construction of a proposed pedestrian crossing at Douglas Avenue, Exmouth. As shown on drawing 70107375 in Appendix 1. At an estimated cost of £101,000; and
- (b) that the Director of Climate Change, Environment and Transport be given delegated powers, in consultation with the Chair of HATOC and the Local Member, to make minor amendments to the scheme details.

#### **2) Introduction**

To support the travel needs and safety of students accessing the Deaf Academy school in Exmouth. The report seek approval to construct a signal controlled “Puffin” pedestrian crossing facility near to the main entrance on Douglas Avenue.

#### **3) Background**

The Deaf Academy is a non-maintained special school providing education and support for young deaf people in Devon and from across the country.

In 2020 the Academy relocated from its former site in Exeter to a new campus in Exmouth. The campus in Exmouth was developed on the site of the old Rolle College.

The Academy site is an education hub for around 50 students aged 5 to 19, 30 of which can stay within residential provision on the main campus. The Academy provides a specialist curriculum, support and care to Deaf young people, the majority of whom have accompanying additional needs including mobility, visual and special educational needs.

The Academy has satellite sites within close walking distance to the main campus. Including Rolle House a registered Children’s Home specialising in caring for children and young people aged between 5 and 17 years who are Deaf or hard of hearing. Rolle house is approximately a 5 minute walk from the main campus facilities. And the Academy recently opened an adult learning and residential centre called Fearnside House. This site provides a residential centre catering for Deaf students aged between 19 and 25. Fearnside House is approximately a 12 minute walk from the main campus.

Students are encouraged by the Academy to develop life skills that will support future independence. And supporting independent travel to access both the Academy and other town services can help contribute towards this.

In 2021 the Academy student council began a campaign to reduce traffic speeds around the main campus and to have zebra crossings put in place to ensure safe crossing points for all deaf children and young people regardless of their additional needs.

At the Devon County Council committee on the 22nd July 2021, a motion was carried to applaud the Deaf Academy Student Council's campaign to reduce the speed of traffic in Douglas Avenue. To call on Highway Officers to introduce a 20mph speed limit in Douglas Avenue. And to install a zebra crossing outside the school to ensure that children and young people can cross the road in safety.

In 2022 with support and funding from the local member. Electronic beacons (school wigwags) in conjunction with school warning signs and an advisory school 20mph speed limit were introduced on the roads around the Academy. And a scheme proposal for a zebra crossing was prepared for consultation and approval to construct in 2023.

Representations were received from stakeholders requesting that DCC consider a signalised crossing to support the sensory and developmental needs of Academy students travelling to the campus.

Following further liaison and confirmation from the Academy that a £30,000 financial contribution would be made towards the additional costs for a signalised crossing and its future maintenance. A revised scheme for a signal controlled "Puffin" pedestrian crossing has been drawn up for consideration by HATOC members.

#### **4) Proposal**

The committee Plan No. 70107375 in Appendix 1, illustrates a signal-controlled Puffin crossing facility. That is located on Douglas Avenue between the Deaf Academy visitor car park entrance and exit junctions.

Within the constraints of the horizontal road alignment and visibility for motorists approaching from Rolle Road the crossing has been located as close as possible to the main site entrance.

The scheme incorporates high friction road surfacing and advanced warning signing on both approaches. And the puffin crossing will incorporate, visual, tactile and audible pedestrian indicators to cross the road.

#### **5) Options/Alternatives**

Due to the site constraints including accesses, road alignment and forward visibility to potential crossing points. Alternative options were considered at the feasibility design stages for locating controlled and uncontrolled crossings along both Douglas Avenue and Rolle Road. Options were considered for amending the current Academy site accesses. An alternative traffic calmed 20mph zone was considered. And a detailed option for an unsignalized "Zebra" controlled crossing was previously prepared.

All options were discussed with the local member and with representatives from the Academy.

## 6) Consultations

Consultations were undertaken by Council staff and by the local member for the area. Consultations were undertaken by correspondence and by site meetings.

## 7) Strategic Plan

The proposed scheme is well aligned with the priorities of the Council’s Strategic Plan 2021– 2025. The table below summarises how this scheme proposal would impact upon individual Strategic Plan actions.

<b>Strategic Plan Priority</b>	<b>Strategic Plan Action</b>	<b>Impact</b>
<b>Respond to the Climate Emergency</b>	Support a green recovery from COVID-19.	+1
	Prioritise sustainable travel and transport.	+2
	Encourage sustainable lifestyles.	+2
<b>Be Ambitious for Children and Young People</b>	Ensure children and young people have the best possible start in life, good health and emotional wellbeing.	+3
<b>Investing in Devon’s economic recovery</b>	Secure investment in transport infrastructure.	+1
	Maintain and, where necessary, improve our highway network and improve sustainable transport options.	+2
<b>Tackle poverty and inequality</b>	Promote services that increase resilience, self-reliance and independence.	+3
<b>Improve health and wellbeing</b>	Give people greater opportunities for walking and cycling to increase their physical activity.	+3
<b>Helping communities to be safe, connected and resilient</b>	Enable a range of transport options, including public transport.	+1

-3	large negative impact
-2	moderate negative impact
-1	small negative impact
0	no impact
+1	small positive impact
+2	moderate positive impact
+3	large positive impact

## **8) Financial Considerations**

The estimated scheme cost of the scheme is £101,000. It is proposed that the scheme will be funded through the Integrated Block element of the Transport Capital Programme.

An external contribution of £30,000 from the Deaf Academy Board has been agreed. The contribution is to be paid upon completion of the pedestrian crossing.

Subject to committee approval and contractor availability, it is intended that construction will take place in the summer holiday period 2024.

## **9) Legal Considerations**

To introduce a new or amended pedestrian crossing a public notice will be required to be advertised in accordance with Section 23 of The Road Traffic Regulation Act.

Modifications to existing waiting restrictions will require changes to a Traffic Regulation Order. When making a Traffic Regulation Order it is the County Council's responsibility to ensure that all relevant legislation is complied with. This includes Section 122 of the Road Traffic Regulation Act 1984 that states that it is the duty of a local authority, so far as practicable, to secure the expeditious, convenient, and safe movement of traffic and provision of parking facilities.

## **10) Environmental Impact Considerations (Including Climate Change, Sustainability and Socio-economic)**

The Devon Carbon Plan identifies that reducing the need to travel and shifting to more sustainable transport options, such as walking, are important ways to tackle transport emissions and reduce greenhouse gas emissions particularly for short distance journeys. By promoting sustainable alternatives to travel by car, the proposal will have a minor but positive effect on vehicle emissions and the environment.

## **11) Equality Considerations**

An individual Equality Impact and Needs Assessment is not considered necessary. The proposed crossing facility helps to enable pedestrians with a wide range of abilities and confidence levels to access the Academy and will help to support other local pedestrian travel needs.

## **12) Risk Management Considerations**

A signalised crossing facility will have ongoing maintenance costs for Devon County Council.

The scheme has been subject to a Stage 1 road safety. And any negative impacts associated with the scheme, have been considered and mitigated.

## **13) Summary/Conclusions/Reasons for Recommendations**

It is recommended that the scheme be approved for construction to support safer school travel and to promote sustainable and healthy travel choices.

**Meg Booth**

Director of Climate Change, Environment and Transport

**Electoral Divisions: Exmouth & Budleigh Salterton Coastal.**

**Local Government Act 1972: List of background papers**

Background Papers Nil

**Contact for enquiries:**

Name: James Anstee

Telephone: 01392 383000

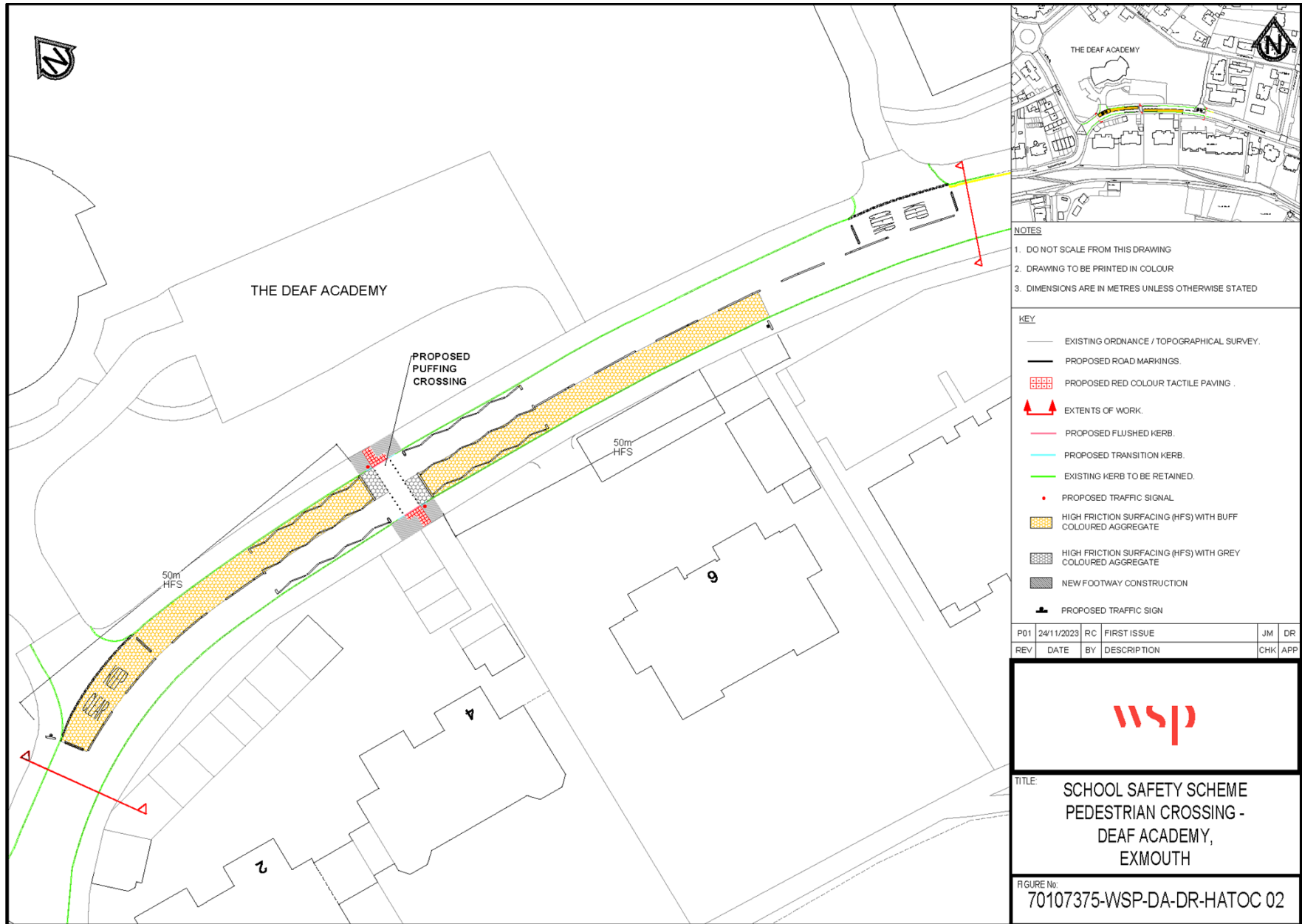
Address: Room 120, County Hall, Topsham Road, Exeter

ja130324edh

sc/cr/Pedestrian Crossing Deaf Academy Exmouth

02 090424

Appendix 1 to CET/24/26



- NOTES
1. DO NOT SCALE FROM THIS DRAWING
  2. DRAWING TO BE PRINTED IN COLOUR
  3. DIMENSIONS ARE IN METRES UNLESS OTHERWISE STATED

- KEY
- EXISTING ORDNANCE / TOPOGRAPHICAL SURVEY.
  - PROPOSED ROAD MARKINGS.
  - ▤ PROPOSED RED COLOUR TACTILE PAVING.
  - ▲▲ EXTENTS OF WORK.
  - PROPOSED FLUSHED KERB.
  - PROPOSED TRANSITION KERB.
  - EXISTING KERB TO BE RETAINED.
  - PROPOSED TRAFFIC SIGNAL.
  - ▨ HIGH FRICTION SURFACING (HFS) WITH BUFF COLOURED AGGREGATE
  - ▩ HIGH FRICTION SURFACING (HFS) WITH GREY COLOURED AGGREGATE
  - ▨ NEW FOOTWAY CONSTRUCTION
  - ▲ PROPOSED TRAFFIC SIGN

P01	24/11/2023	RC	FIRST ISSUE	JM	DR
REV	DATE	BY	DESCRIPTION	CHK	APP



TITLE:  
**SCHOOL SAFETY SCHEME  
 PEDESTRIAN CROSSING -  
 DEAF ACADEMY,  
 EXMOUTH**

FIGURE No:  
**70107375-WSP-DA-DR-HATOC 02**