

Waste Performance Statistics 2021/22

Report of the Director of Climate Change, Environment and Transport

Please note that the following recommendations are subject to consideration and determination by the Committee before taking effect.

Recommendation: that the Committee

- (a) note the performance statistics for 2021/22 and the ongoing challenges arising from impact of the Covid19 pandemic & the current geopolitical landscape;
- (b) continue to support DASWC authorities to provide comprehensive waste services for residents in accordance with the objectives outlined in the Resource and Waste Management Strategy for Devon and Torbay (2020-2030).

1. Summary

This report provides members with an overview of waste performance statistics for Devon and Torbay for 2021/22. Individual performance tables are included in Appendix 1.

Official waste statistics for English Authorities are published by Defra later in the year.

2. Introduction

On the 19 of July 2021, the UK Government lifted all remaining Covid-19 restrictions as part of England's 'roadmap out of lockdown'. Despite this, the pandemic, and other employment and financial challenges, continue to impact on service delivery for many DASWC authorities due to sickness and staff shortages. However, with support from Devon's residents, DASWC authorities continue to strive to deliver regular high-quality waste and recycling services, and their resilience and effective planning during these unprecedented times should be recognised.

In 2020, England's official 'recycling rate' known as 'Waste from Households' (WfH) reduced to 44% from 45.5% in 2019. The calculation of this annual National rate, which includes metals recovered from incineration, differs from the recycling calculation for local authorities through National Indicator 192 (NI192) to harmonise UK reporting. Wales continues to increase WfH performance annually achieving 56.5% in 2020, but both the English and combined UK WfH recycling rate has remained stable for the past 10 years.

Official DEFRA local authority statistics for 2020/21 indicate that despite this static backdrop, some English local authorities did improve actual or relative recycling

performance. In 2020/21, East Devon achieved its highest ever ranking of 6th place nationally at 60% (NI192 – Recycling Rate) for Waste Collection Authorities (WCA), despite a NI192 reduction of 0.5% from the previous year.

In 2020/21, Devon County Council, which includes the combined performance of WCAs, and Household Waste Recycling Centres (HWRCs) retained its position as 2nd highest performing Waste Disposal Authority (WDA) at 55.3% (NI192), up from third place in 2018/19. Provisional National data suggests that Devon has retained this 2nd place position in 2021/22. Torbay at 35.5% (NI192) was positioned 58/92 Unitary Authorities (UA) compared to 51/92 the previous year, and as such a mid-performing UA for this indicator.

In 2021/22, DASWC statistics indicate that all DASWC authorities, apart from East Devon and Torbay, experienced static, or reductions in Recycling Rate (NI192), which in part, was due to service disruption, but also changes in residents' behaviours. Overall, Devon's recycling performance reduced by 0.2% to 55.1%, comparable with the rate achieved in 2015/16. Conversely, Torbay increased its performance by 1.4% to 37.1% (NI192), below its peak performance of 44.7% achieved in 2012/13.

It is recognised that waste behaviour changed significantly during the pandemic, and there are signs that pre-pandemic behaviours are returning – waste volumes at the kerbside have reduced as some home working has now ceased and there is an increase in waste being deposited at the HWRCs. Government policy for more consistent waste collections, the introduction of Extended Producer Responsibility for Packaging and a Deposit Return Scheme will again significantly impact on how waste is collected and managed, as well as how it is funded – further details are still awaited from Government. The cost-of-living crisis, as well as the geopolitical challenges, will also impact on waste generation and service delivery. High levels of inflation are increasing the cost of service delivery for local authorities. There are likely to be significant challenges ahead, but DASWC Authorities are well placed to meet them, being mindful too of the desire to deliver net zero carbon services.

3. Waste Performance Statistics 2021/22

During 2021/22, the average recycling rate for Devon's WCAs reduced from 51.5% (2020/21) to 49.8% illustrating an ongoing stabilisation of performance since 2005 and shown in Table 1 - Recycling Rate Profile (WCAs).

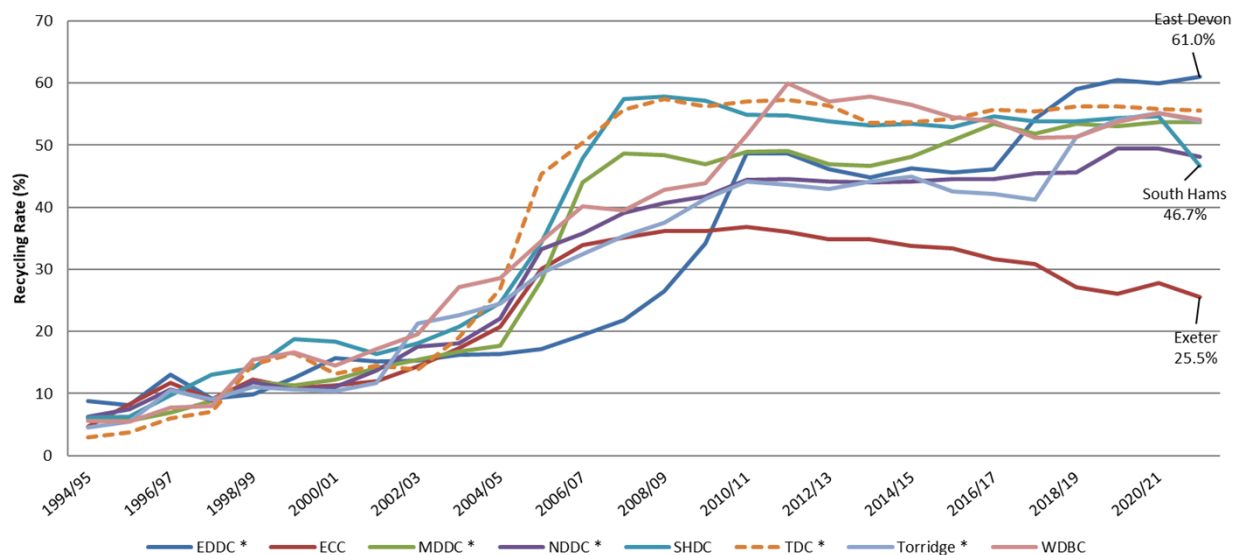


Table 1 – Recycling Rate Profile (WCAs)

The significant increase in performance in 2005 was principally driven by the DEFRA supported ‘Devon Composting Partnership’ which significantly improved organic waste collections for residents. From 2016, further service improvements reflecting the adoption of the DASWC ‘aligned option’ resulted in further performance boosts for five authorities signed up to the award winning ‘Shared Savings Scheme’ (SSS) denoted (*) on table 1. The SSS has enabled WCAs to invest in significant service changes during times of austerity and benefit from over £4m in inter-authority savings ‘payments’ since 2016 arising as the result of reduced disposal and treatment costs borne by the WDA.

The Devon Composting Partnership, Aligned Option, Resource and Waste Management Strategy for Devon and Torbay (RWS), and SSS illustrate the benefits of DASWC and the collaborative and supportive relationships between authorities to improve services and performance for residents.

Table 2 presents the DASWC Recycling Rate (NI192) performance for 2020/21 and 2021/22 also indicating the variance between years.

NI192	2020/21	2021/22	Change (%)
East Devon	60.0%	61.0%	1.0%
Exeter	27.8%	25.5%	-2.3%
Mid Devon	53.7%	53.7%	0.0%
North Devon	49.4%	48.2%	-1.2%
South Hams	54.7%	46.7%	-8.0%
Teignbridge	55.9%	55.6%	-0.3%
Torridge	55.2%	53.9%	-1.3%
West Devon	55.2%	54.1%	-1.1%
Devon	55.3%	55.1%	-0.2%
Torbay	35.7%	37.1%	1.4%

Table 2 – Recycling Rates (NI192)

As Devon’s highest performer, East Devon was the first Devon authority to exceed the 60% recycling rate in 2019/20 through its comprehensive ‘aligned option’ kerbside collection service. This included, weekly dry recycling and food waste, three weekly residue and chargeable garden waste collections. In 2021/22 the authority further increased its Recycling Rate (NI192) to 61% (+1%) which, based on provisional national data, places the authority just 2.5% below the highest performing WCA in England.

South Hams experienced an 8% drop in recycling performance, largely an outcome of the service disruption that has occurred due to several factors. Steps have been taken to rectify some of these issues including taking the service back in-house. It is hoped that this will allow South Hams to move to the Devon aligned service next year.

Exeter also experienced a reduction in rate (NI192) to 25.5% (-2.3%) which is the authority’s lowest performance since 2004, and 11% lower than its peak of 36.9% in 2010/11. However, steps are being taken to improve the MRF performance as well as introducing a pilot food waste collection which should enable Exeter to begin to improve on its current performance.

Table 3 shows the relative performance for DASWC authorities since 2013/14 to illustrate the general authority performance profile, but in the case of East Devon (61%), North Devon (48.2%) and Torridge (53.9%), this table also shows the performance enhancement of service changes resulting from, in part, investment driven by the SSS.

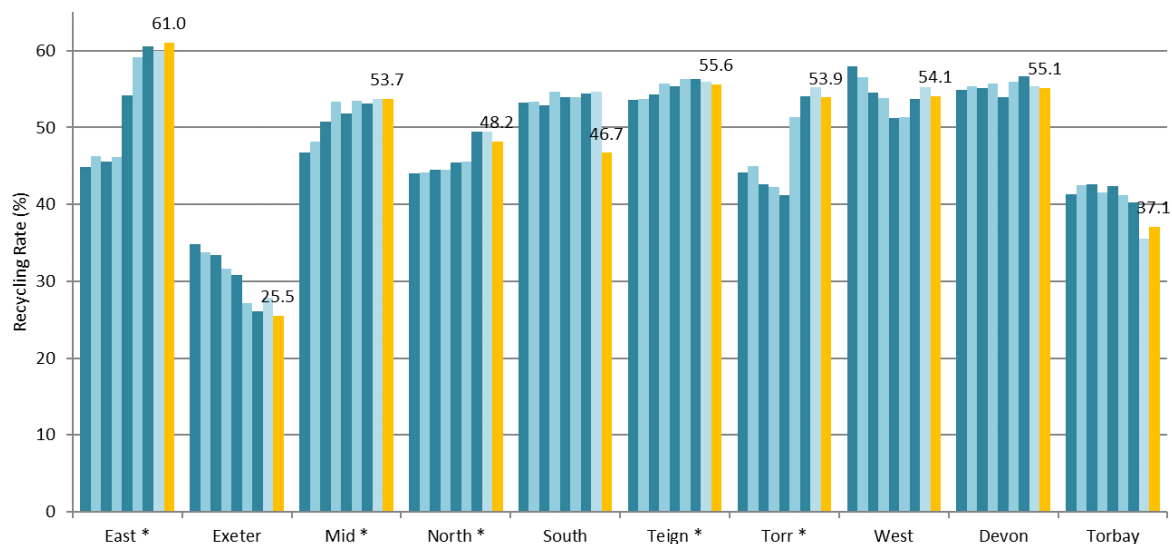


Table 3 – DASWC Recycling Performance since 2013/14

Whilst Mid Devon (53.7%) and Teignbridge (55.6%) are also SSS authorities, their performance indicates a gradual and ongoing improvement reflecting their early involvement in the scheme. It is also important to note that whilst improved performance has been assisted by the SSS, this mutually beneficial scheme is rooted in the reduction of disposal and treatment costs, such as waste prevention or transfer of waste from more expensive to cheaper disposal routes such as Anaerobic Digestion for separately collected food waste.

With performance fluctuating both nationally and for DASWC authorities, table 4 profiles Devon’s performance plotted against future recycling targets through the RWS and current national policy. This table shows that whilst previous targets have been met, future targets of 60% (2025) and 65% (2035) will require concerted effort and collaboration to divert more waste from the household waste stream to be recycled or composted to improve performance.

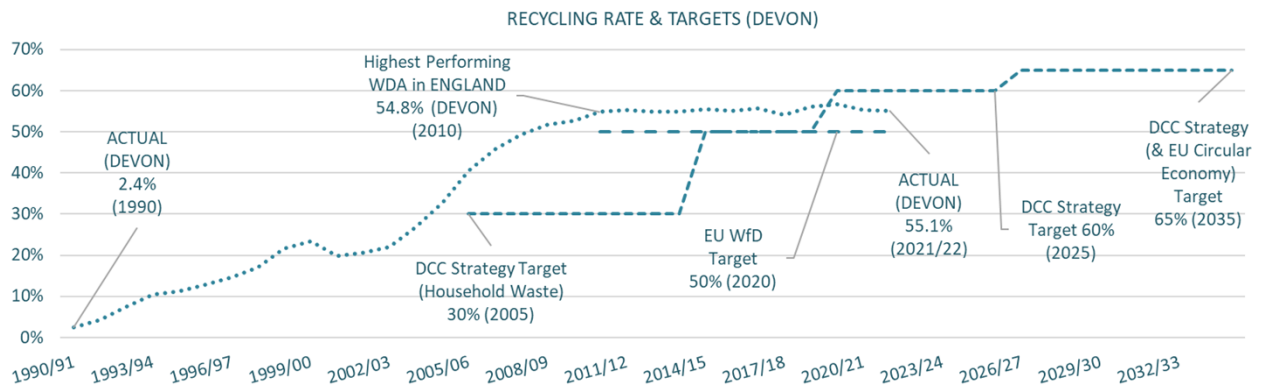


Table 4 – Performance and Targets (Devon)

During autumn of 2022, Devon authorities will be embarking on a waste compositional analysis exercise of the residual waste stream. These results will allow more targeted and relevant communications and resident engagement to ensure the right waste is in the right bin with subsequent improved performance and reduced cost benefits.

Further work to reduce costs and boost performance is also taking place at Torbay and Devon’s HWRCs. In Torbay, charges for building and other non-household streams were introduced in early 2021 which combined with a site booking service ensure that only domestic users can access the sites with household waste. In Devon, charges already apply for non-household streams and the authority is continuing to roll out its Van Permit Scheme (VPS). The Devon VPS was launched in April 2022 for Exeter HWRCs with positive results noted leading to a reduction in waste and less congestion at the sites. Teignbridge and East Devon HWRCs launched the VPS in July 2022 with Mid Devon and remaining authority areas planned from the autumn onwards. By 2023, all of Devon’s HWRCs will be subject to the VPS.

Waste volumes and hence costs are reduced by preventing the production of waste at source. Former performance indicator BVPI84a measures the amount of household waste collected per head (Kg) and therefore provides a reliable performance benchmark.

The RWS establishes a target to reduce the amount of household waste collected to 400kg per head by 2030, from 447kg reported in 2020/21. This target applies to Devon and Torbay in their role as ‘disposal authorities’ and incorporates waste collected from households and through HWRCs. Whilst this target does not apply to specifically to individual WCAs, they have a role to play to encourage the reduction in waste at source.

Table 5 shows DEFRA BVPI84a data for Devon and Torbay, illustrating the gradual reduction in waste collected since 2007/08. This profile aligns to the England WDA average, and RWS targets since 2012. Due to the way this indicator is calculated, there is a slight variation noted between DEFRA and DASWC reported BVPI84a data.

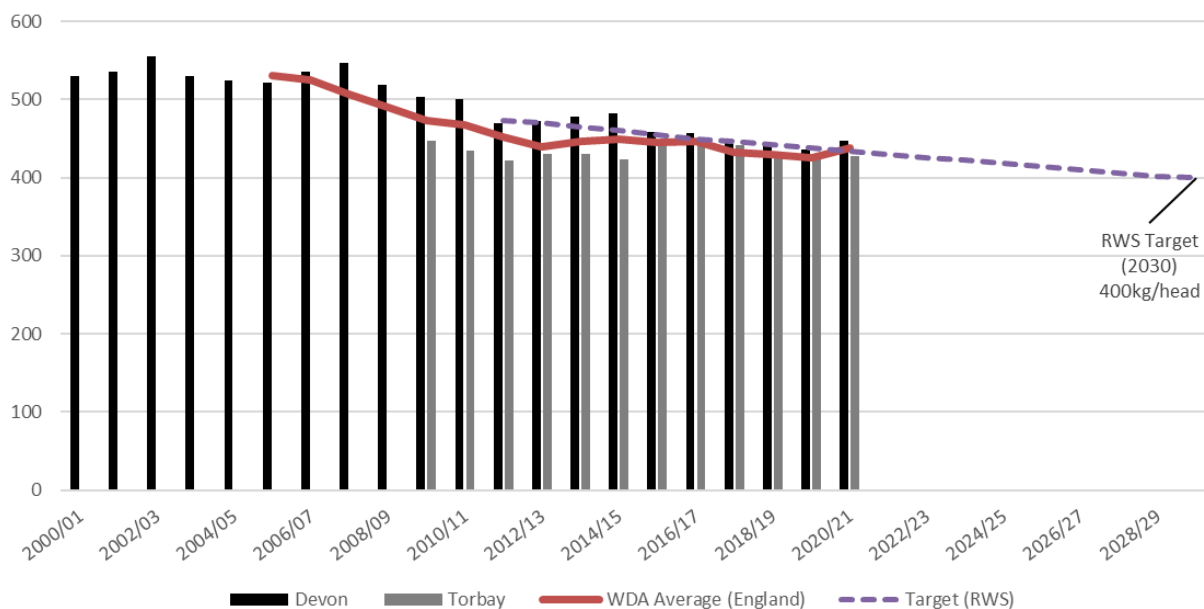


Table 5 – Household Waste Collection (Kg per head) (BVPI84a)

Whilst there is no BVPI84a target for WCAs, Table 6 indicates the variation in waste collected by Devon’s WCAs according to DASWC data, with Exeter (293kg/hd) performing very well in comparison to other authorities. Devon and Torbay performance includes domestic waste collection (WCAs) and HWRCs.

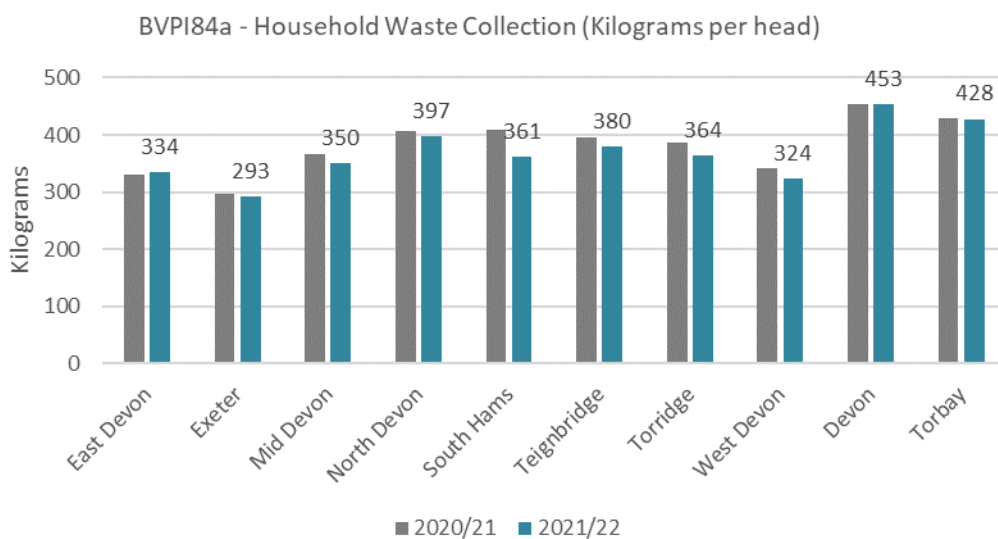


Table 6 – BVPI84a (kg/hd) DASWC

The introduction of new services, particularly garden waste, can impact significantly on this indicator hence the aligned option (Table 7) indicates a preference for a chargeable service with financial and waste reduction benefits.

Table 7 illustrates progress toward the Devon ‘Aligned Option’ with East Devon, North Devon, Teignbridge, Torridge, West Devon and Torbay delivering services in line with this objective. South Hams are working towards being aligned from 2023 with Exeter also looking to expand its pilot food waste collection service.

Progress toward the ‘Aligned Option’		Version: October 2022			
					
		Food Waste (Weekly)	Garden Waste (£/fortnightly)	Dry Recycling (Weekly)	Residue (fortnightly)
East Devon	✓	✓	✓	✓	✓ (3)
Exeter		(X)	✓	(f)	✓
Mid Devon		✓	✓	(f)	✓ (3)
North Devon	✓	✓	✓	✓	✓
South Hams	✓	✓ (50%)	✓ (2023)	✓	✓
Teignbridge	✓	✓	✓	✓	✓
Torridge	✓	✓	✓	✓	✓
West Devon	✓	✓	✓	✓	✓
Torbay	✓	✓	✓	✓	✓

YELLOW = aligned option / £ = charged service / m = mixed collection / f = fortnightly / 3 = 3wkly / X = N/A / O = Other

Table 7 – Aligned Option (DASWC)

Organic waste remains a strong influencer for DASWC performance, accounting for 47% and 31% respectively of Devon and Torbay’s total recycling collected. During 2021/22 service disruption resulted in 6,000 fewer tonnes of organic waste collected kerbside compared to the previous year, due principally to the problems noted for South Hams collections. Whilst HWRC covid closures during 2020/21 impacted on the amount of organic waste processed through sites last year, during 2021/22, organic waste levels returned to just below pre-pandemic levels, an increase of over 4,000 tonnes. Within the South Hams area alone, HWRC garden waste increased by over 1,200 tonnes due to domestic service disruption to kerbside organic collections.

Household waste growth reduced to 1.2% for Devon last year compared to 3% the previous year, and the impacts of residents’ behaviour led to a reversal of growth patterns with WCAs at -2.8% and HWRCs +17.2% compared to a 14% HWRC

reduction the previous year. Overall, Devon collected over 4,500 tonnes more household waste during 2021/22 than in 2020/21.

Table 8 shows the composition of the main recycling streams for Devon and Torbay. ‘Other’ category includes non-specified DASWC categories including mixed cans, HWRC timber and metal. HWRC reuse increased during 2021/22 to over 1,000 tonnes, which is a welcome return to pre-pandemic levels of resale to the benefit of residents and performance.

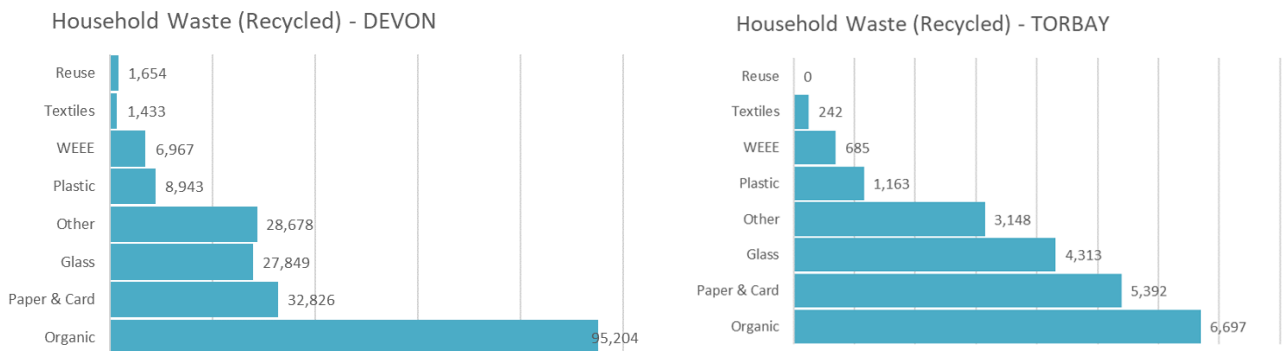


Table 8 – Tonnes of Household Waste Recycled (Devon & Torbay)

DASWC authorities routinely monitor the effectiveness of their service provision, to ensure that collection schemes are operating efficiently and used effectively by all residents. Treatment of residual waste is the single most expensive disposal process and so householder communications targeting the diversion of food waste from residual streams where there is a weekly collection in place is a key focus to extract as much value from the waste as possible, with associated carbon benefits.

Local Authority trade waste collection services account for over 11,000 tonnes of waste managed by those authorities operating commercial services. With likely implications through the Consistency in Household and Business Recycling in England, Devon’s commercial service providers (Exeter, Mid Devon, North Devon and South Hams) will need to consider opportunities to boost recycling from their customers. In 2021/22, less than 15% of commercial waste was recycled via these services and so this is an area which could potentially be significantly improved.

4. Consultations/Representations/Technical Data

There are no consultations/representations/technical data applicable to this report.

5. Strategic Plan

This DASWC report aligns to the shared ambitions of the Resources and Waste Management Strategy for Devon and Torbay and Devon County Council’s Strategic Plan 2021 – 2025 in support of the Making Devon Greener strategic priority.

6. Financial Considerations

Managing waste more effectively in line with the Waste Hierarchy can reduce costs at a time when local authority budgets are under even more pressure. Inflation at levels not seen for a number of years is also adding significant pressure to costs for both waste collection, treatment and disposal. Investment in communications for residents and capital investment for improved services has the potential to reduce revenue costs for local authorities and should continue to be supported by members.

7. Legal Considerations

The lawful implications of the recommendations have been considered and taken into account in the preparation of this report. Local authorities are legally bound to provide waste & recycling services to residents within a tightly regulated industry. Authorities also have a legal duty to ensure data quality for subsequent reporting to government.

8. Environmental Impact Considerations (Including Climate Change)

Effective waste management systems and processes have the potential to reduce carbon emissions where recovered material meets quality standards and as a result replaces the need for primary raw materials for subsequent manufacture and consumption. The Resource and Waste Management Strategy for England outlines the strategic direction for the waste industry to develop and implement sustainable development goals. These include a UK target to eliminate avoidable waste of all kinds by 2050 and banning food waste from landfill from 2030. Local authorities are also investigating options for more sustainable fleet and operations. Waste prevention including reducing food waste and re-use of resources are critical to meeting carbon net zero targets.

9. Equality Considerations

There are no equality considerations associated with this report.

10. Risk Management Considerations

There are no significant risks associated with this report, but members should consider national policy changes which have the potential to impact on current systems and processes.

11. Public Health Impact

There are no public health impacts associated with this report.

12. Summary/Conclusions/Reasons for Recommendations

This report updates DASWC members with Waste Performance Statistics for 2021/22.

Meg Booth
Director of Climate Change, Environment and Transport

Electoral Divisions: All

Local Government Act 1972: List of Background Papers

Contact for Enquiries: Iain Stevens

Tel No: 01392 383000

Background Paper

Date

File Reference

Nil

Waste Performance Statistics 2021/22 - Final

Appendix 1 to CET/22/55

DEVON 2021/22

Version: 27/07/22

Status: FINAL

Data Source: Statistics Payments and Recharges (SPR). National Statistics available from WasteDataFlow: www.wastedataflow.org

YRSUM

RECYCLED (Household Waste)		2020/21	2021/22
Glass	Bring Bank	6,399.655	3,873.574
	Kerbside	20,877.994	23,106.422
	Third Parties	0.000	0.000
	Recycling Centres	760.870	868.540
	Sub total	28,038.519	27,848.536
Paper & Card	Bring Bank	1,396.606	1,281.544
	Kerbside	27,763.737	27,223.380
	Third Parties	23.032	44.586
	Recycling Centres	3,435.429	4,276.724
	Sub total	32,618.804	32,826.234
Textiles	Bring Bank	619.971	795.470
	Kerbside	51.219	172.858
	Third Parties	2.664	7.465
	Recycling Centres	423.995	457.538
	Sub total	1,097.848	1,433.332
Plastic	Bring Bank	121.240	119.253
	Kerbside	8,214.696	8,187.297
	Third Parties	0.215	0.870
	Recycling Centres	427.170	635.395
	Sub total	8,763.321	8,942.815
WEEE	Bring Bank	0.000	0.000
	Kerbside	224.834	253.248
	Third Parties	0.000	0.000
	Recycling Centres	6,033.406	6,713.454
	Sub total	6,258.240	6,966.702
Organic	Food Waste (AD)	25,370.738	26,374.559
	Garden/Food Mx	48,450.140	41,226.264
	Leaf Sweeping	5,522.960	4,051.173
	Third Parties	1,023.128	960.844
	Recycling Centres	18,563.085	22,591.465
Sub total	98,930.051	95,204.305	
Other	Bring Bank	93.826	64.455
	Kerbside	3,533.192	3,229.913
	Third Parties	16.337	23.428
	Recycling Centres	21,686.081	25,360.374
	Sub total	25,329.436	28,678.169
Reuse	Bring Bank	0.000	0.000
	Kerbside	0.000	0.000
	Third Parties	351.456	613.217
	Recycling Centres	379.290	1,040.743
	Sub total	730.746	1,653.960
SUB TOTALS	Bring Bank	8,631.298	6,134.296
	Kerbside (Dry)	60,665.672	62,173.118
	Third Parties	1,416.832	1,650.410
	Organic (WCA)	79,343.838	71,651.996
	TOTAL WCA	150,057.639	141,609.820
TOTAL WDA (Recycling Centres)	51,709.326	61,944.233	
TOTAL RECYCLED (Household)	201,766.965	203,554.053	

RECYCLED (Non Household Waste)		2020/21	2021/22
WCA	TRADE	1,178.604	1,652.827
	Fly Tipped	103.970	65.399
	Other	0.000	0.000
	TOTAL WCA	1,282.574	1,718.226
WDA	TRADE (Green)	50.825	44.275
	TRADE (Card)	7.000	24.000
	Soil & Rubble	2,642.551	3,249.485
	Plasterboard	490.390	615.450
	Other	0.000	0.000
	TOTAL WDA	3,190.766	3,933.210
TOTAL RECYCLED (Non Household)	4,473.340	5,651.436	

NON RECYCLED (Household Waste)		2020/21	2021/22
Dustbin		132,974.414	133,575.757
MRF (Reject)		4,423.822	4,287.288
Bulky Collection		90.490	135.730
Healthcare		226.523	179.831
Street Cleansing		3,876.290	3,831.630
IVC (Reject)		0.000	0.000
Other		0.000	0.000
TOTAL WCA	141,591.539	142,010.236	
Recycling Centres - Other		9,794.393	11,103.311
Recycling Centres - ERF		11,561.574	12,596.772
TOTAL WDA	21,355.967	23,700.082	
TOTAL NON RECYCLED (WCA+WDA)	162,947.506	165,710.318	

NON RECYCLED (Non Household Waste)		2020/21	2021/22
TRADE - Commercial & Industrial		8,478.394	9,644.451
TRADE - Construction & Demolition		0.000	0.000
TOTAL WCA - TRADE	8,478.394	9,644.451	
Fly Tipped		1,668.458	1,303.061
Other (Non Household)		182.600	182.600
TOTAL WCA - OTHER	1,851.058	1,485.661	
Recycling Centre (WDA)		0.000	0.000
TOTAL NON RECYCLED (WCA+WDA)	10,329.452	11,130.112	

SUMMARY (Household Waste)		2020/21	2021/22
RECYCLED (Incl. Reuse)		102,836.914	108,349.748
COMPOSTED		98,930.051	95,204.305
TOTAL (REC & COMP) (NI192)	201,766.965	203,554.053	
ENERGY RECOVERY (ERF) (Indicative)		146,194.222	148,986.135
OTHER (LANDFILL)		16,753.284	16,724.184
TOTAL (NON-RECYCLED) (NI191)	162,947.506	165,710.318	
TOTAL (Household Waste) (WCA+WDA)	364,714.472	369,264.371	

SUMMARY (Non Household Waste)		2020/21	2021/22
RECYCLED (Incl. REUSE)		4,368.313	5,521.981
COMPOSTED		105.027	129.455
TOTAL (REC & COMP)	4,473.340	5,651.436	
ENERGY RECOVERY (ERF) (Indicative)		10,052.472	10,848.719
OTHER (LANDFILL)		276.980	281.393
TOTAL (NON-RECYCLED)	10,329.452	11,130.112	
TOTAL (Non Household Waste) (WCA+WDA)	14,802.793	16,781.548	

SUMMARY (LACW)		2020/21	2021/22
LACW (REC & COMP)		206,240.306	209,205.489
LACW (NON RECYCLED)		173,276.959	176,840.430
TOTAL LACW (WCA+WDA)	379,517.264	386,045.919	

PERFORMANCE INDICATORS		2020/21	2021/22
NI192 (Recycling Rate %)		55.3%	55.1%
BVPI 84a (kgs waste per head)		453.6	453.4
NI191 (kgs residual per household)		429	432
NI193 (% MSW (LACW) landfilled)*		4.5%	4.4%
<i>*Indicative</i>			
Recycling Rate (HWRC) (WDA)		72.0%	73.5%
NOTE: HWRC Recycling Rate includes all LACW			

WASTE GROWTH		2020/21	2021/22
TOTAL HOUSEHOLD (WCA)		8.6%	-2.8%
TOTAL HOUSEHOLD (WDA)		-14.5%	17.2%
TOTAL HOUSEHOLD (WCA+WDA)	3.0%	1.2%	

POPULATION		802,375	810,716
DWELLING STOCK		379,800	383,310

LACW - Local Authority Collected Waste (Household + Non Household)

ERF: Input - Includes IBA (recovered) and Healthcare Wastes.

EAST DEVON 2021/22

Status: **FINAL**

Data Source: Statistics Payments and Recharges (SPR). National Statistics available from WasteDataFlow: www.wastedataflow.org

RECYCLED (Household Waste)

		2020/21	2021/22
Glass	Bring Bank	0.000	0.000
	Kerbside	5,795.520	5,665.330
	Third Parties	0.000	0.000
	Recycling Centres	93.940	133.340
	Sub total	5,889.460	5,798.670

		2020/21	2021/22
Paper & Card	Bring Bank	0.440	2.320
	Kerbside	6,233.340	6,145.290
	Third Parties	3.327	8.548
	Recycling Centres	671.980	820.280
	Sub total	6,909.087	6,976.438

		2020/21	2021/22
Textiles	Bring Bank	25.774	30.346
	Kerbside	28.427	68.030
	Third Parties	0.000	0.850
	Recycling Centres	87.714	104.840
	Sub total	141.915	204.066

		2020/21	2021/22
Plastic	Bring Bank	0.000	0.000
	Kerbside	2,168.850	2,143.450
	Third Parties	0.000	0.000
	Recycling Centres	115.760	136.700
	Sub total	2,284.610	2,280.150

		2020/21	2021/22
WEEE	Bring Bank	0.000	0.000
	Kerbside	70.115	78.405
	Third Parties	0.000	0.000
	Recycling Centres	1,053.636	1,148.072
	Sub total	1,123.751	1,226.477

		2020/21	2021/22
Organic	Food Waste (AD)	7,262.830	7,179.210
	Garden/Food Mx	5,370.170	6,846.094
	Leaf Sweeping	1,204.440	1,278.720
	Third Parties	11.258	5.200
	Recycling Centres	6,061.550	6,733.185
Sub total	19,910.248	22,042.409	

		2020/21	2021/22
Other	Bring Bank	0.000	0.000
	Kerbside	811.880	747.808
	Third Parties	0.000	0.000
	Recycling Centres	3,957.795	4,442.665
	Sub total	4,769.675	5,190.472

		2020/21	2021/22
Reuse	Bring Bank	0.000	0.000
	Kerbside	0.000	0.000
	Third Parties	24.455	34.406
	Recycling Centres	65.785	225.942
	Sub total	90.240	260.348

		2020/21	2021/22
SUB TOTALS	Bring Bank	26.214	32.666
	Kerbside (Dry)	15,108.132	14,848.313
	Third Parties	39.040	49.004
	Organic (WCA)	13,837.440	15,304.024
	TOTAL WCA	29,010.826	30,234.007
TOTAL WDA (Recycling Centres)	12,108.160	13,745.024	
TOTAL RECYCLED (Household)	41,118.986	43,979.031	

RECYCLED (Non Household Waste)

		2020/21	2021/22
WCA	TRADE	0.000	0.000
	Fly Tipped	0.000	1.665
	Other	0.000	0.000
	TOTAL WCA	0.000	1.665

		2020/21	2021/22
WDA	TRADE (Green)	7.800	9.525
	TRADE (Card)	0.000	7.500
	Soil & Rubble	488.540	645.040
	Plasterboard	73.120	104.720
	Other	0.000	0.000
TOTAL WDA	569.460	766.785	

TOTAL RECYCLED (Non Household) 569.460 768.450

NON RECYCLED (Household Waste)

		2020/21	2021/22
NON RECYCLED (Household Waste)	Dustbin	18,416.159	18,377.814
	MRF (Reject)	5.664	1.402
	Bulky Collection	0.000	0.000
	Healthcare	63.696	24.004
	Street Cleansing	824.140	890.920
	IVC (Reject)	0.000	0.000
	Other	0.000	0.000
	TOTAL WCA	19,309.659	19,294.140
	Recycling Centres - Other	3,741.261	4,164.809
	Recycling Centres - ERF	154.707	136.266
	TOTAL WDA	3,895.968	4,301.075
TOTAL NON RECYCLED (WCA+WDA)	23,205.627	23,595.215	

NON RECYCLED (Non Household Waste)

		2020/21	2021/22
NON RECYCLED (Non Household Waste)	TRADE - Commercial & Industrial	53.176	53.176
	TRADE - Construction & Demolition	0.000	0.000
	TOTAL WCA - TRADE	53.176	53.176
	Fly Tipped	157.165	58.890
	Other (Non Household)	0.000	0.000
	TOTAL WCA - OTHER	157.165	58.890
	Recycling Centre (WDA)	0.000	0.000
	TOTAL NON RECYCLED (WCA+WDA)	210.341	112.066

WCA SUMMARY (Household)

	2020/21	2021/22
RECYCLED (Incl. Reuse)	15,162.127	14,924.783
COMPOSTED	13,848.698	15,309.224
TOTAL (REC & COMP) (WCA) (NI192)	29,010.826	30,234.007
ENERGY RECOVERY (ERF) (Indicative)	17,465.659	18,182.680
OTHER (LANDFILL)	1,844.000	1,111.460
TOTAL (NON-RECYCLED) (WCA) (NI191)	19,309.659	19,294.140
TOTAL (Household Waste) (WCA)	48,320.485	49,528.147

WCA SUMMARY (Non Household)

	2020/21	2021/22
RECYCLED (Incl. REUSE)	0.000	1.665
COMPOSTED	0.000	0.000
TOTAL (REC & COMP) (WCA)	0.000	1.665
ENERGY RECOVERY (ERF) (Indicative)	210.341	112.066
OTHER (LANDFILL)	0.000	0.000
TOTAL (NON-RECYCLED) (WCA)	210.341	112.066
TOTAL (Non Household Waste) (WCA)	210.341	113.731

WCA SUMMARY (LACW)

	2020/21	2021/22
LACW (REC & COMP)	29,010.826	30,235.672
LACW (NON RECYCLED)	19,520.000	19,406.206
TOTAL LACW (WCA)	48,530.826	49,641.878

PERFORMANCE INDICATORS

	2020/21	2021/22
NI192 (Recycling Rate %)	60.0%	61.0%
BVPI 84a (kgs waste per head)	330.2	334.2
NI191 (kgs residual per household)	272	269
NI193 (% MSW (LACW) landfilled)*	3.8%	2.2%
<i>*Indicative. WDA/UA indicator only.</i>		
Recycling Rate (H/H) (WCA + WDA)	63.9%	65.1%
Recycling Rate (HWRC) (WDA)	76.5%	77.1%
<i>NOTE: Recycling Centres includes non household</i>		

WASTE GROWTH

	2020/21	2021/22
TOTAL HOUSEHOLD (WCA)	8.9%	2.5%
TOTAL HOUSEHOLD (WDA)	-10.9%	12.8%
TOTAL HOUSEHOLD (WCA+WDA)	3.2%	5.1%

	2020/21	2021/22
POPULATION	146,284	148,080
DWELLING STOCK	70,890	71,670

LACW - Local Authority Collected Waste (Household + Non Household)
ERF: Input - Includes IBA (recovered) and Healthcare Wastes.

EXETER 2021/22

Status: **FINAL**

Data Source: Statistics Payments and Recharges (SPR). National Statistics available from WasteDataFlow: www.wastedataflow.org

RECYCLED (Household Waste)			
		2020/21	2021/22
Glass	Bring Bank	2,658.340	2,451.010
	Kerbside	58.150	109.290
	Third Parties	0.000	0.000
	Recycling Centres	195.300	295.860
	Sub total	2,911.790	2,856.160
Paper & Card	Bring Bank	73.830	70.350
	Kerbside	2,537.270	2,266.000
	Third Parties	0.000	14.920
	Recycling Centres	571.660	707.210
	Sub total	3,182.760	3,058.480
Textiles	Bring Bank	86.453	129.935
	Kerbside	0.240	0.000
	Third Parties	0.000	0.000
	Recycling Centres	90.671	130.045
	Sub total	177.364	259.980
Plastic	Bring Bank	0.000	0.000
	Kerbside	804.030	633.860
	Third Parties	0.000	0.000
	Recycling Centres	31.440	48.410
	Sub total	835.470	682.270
WEEE	Bring Bank	0.000	0.000
	Kerbside	15.300	12.915
	Third Parties	0.000	0.000
	Recycling Centres	949.687	1,087.740
	Sub total	964.987	1,100.655
Organic	Food Waste (AD)	0.000	53.640
	Garden/Food Mx	3,484.210	3,364.130
	Leaf Sweeping	519.420	378.965
	Third Parties	0.000	0.000
	Recycling Centres	3,045.280	3,493.420
Sub total	7,048.910	7,290.155	
Other	Bring Bank	10.196	3.040
	Kerbside	505.910	407.520
	Third Parties	0.000	0.000
	Recycling Centres	3,845.486	4,456.609
	Sub total	4,361.592	4,867.169
Reuse	Bring Bank	0.000	0.000
	Kerbside	0.000	0.000
	Third Parties	70.950	83.919
	Recycling Centres	99.669	240.301
	Sub total	170.619	324.220
SUB TOTALS	Bring Bank	2,828.819	2,654.335
	Kerbside (Dry)	3,920.900	3,429.585
	Third Parties	70.950	98.839
	Organic (WCA)	4,003.630	3,796.735
	TOTAL WCA	10,824.299	9,979.494
	TOTAL WDA (Recycling Centres)	8,829.193	10,459.595
	TOTAL RECYCLED (Household)	19,653.492	20,439.089

RECYCLED (Non Household Waste)			
		2020/21	2021/22
WCA	TRADE	644.290	704.530
	Fly Tipped	51.210	28.920
	Other	0.000	0.000
	TOTAL WCA	695.500	733.450
WDA	TRADE (Green)	34.700	30.700
	TRADE (Card)	6.000	3.000
	Soil & Rubble	598.440	611.080
	Plasterboard	86.460	102.680
	Other	0.000	0.000
	TOTAL WDA	725.600	747.460
TOTAL RECYCLED (Non Household)	1,421.100	1,480.910	

NON RECYCLED (Household Waste)			
		2020/21	2021/22
Dustbin		23,452.035	24,093.450
MRF (Reject)		3,577.720	3,850.243
Bulky Collection		13.540	0.000
Healthcare		3.811	2.850
Street Cleansing		1,117.160	1,196.400
IVC (Reject)		0.000	0.000
Other		0.000	0.000
TOTAL WCA	28,164.266	29,142.943	
Recycling Centres - Other		3,626.648	4,135.419
Recycling Centres - ERF		195.459	141.263
TOTAL WDA	3,822.107	4,276.682	
TOTAL NON RECYCLED (WCA+WDA)	31,986.373	33,419.625	

NON RECYCLED (Non Household Waste)			
		2020/21	2021/22
TRADE - Commercial & Industrial		1,938.230	2,011.001
TRADE - Construction & Demolition		0.000	0.000
TOTAL WCA - TRADE	1,938.230	2,011.001	
Fly Tipped		136.065	568.270
Other (Non Household)		0.000	0.000
TOTAL WCA - OTHER	136.065	568.270	
Recycling Centre (WDA)		0.000	0.000
TOTAL NON RECYCLED (WCA+WDA)	2,074.295	2,579.271	

WCA SUMMARY (Household)			
		2020/21	2021/22
RECYCLED (Incl. Reuse)		6,820.669	6,182.759
COMPOSTED		4,003.630	3,796.735
TOTAL (REC & COMP) (WCA)	10,824.299	9,979.494	
ENERGY RECOVERY (ERF) (Indicative)		23,478.046	24,773.450
OTHER (LANDFILL)		4,686.220	4,369.493
TOTAL (NON-RECYCLED) (WCA)	28,164.266	29,142.943	
TOTAL (Household Waste) (WCA)	38,988.565	39,122.437	

WCA SUMMARY (Non Household)			
		2020/21	2021/22
RECYCLED (Incl. REUSE)		695.500	733.450
COMPOSTED		0.000	0.000
TOTAL (REC & COMP) (WCA) (NI192)	695.500	733.450	
ENERGY RECOVERY (ERF) (Indicative)		1,980.935	2,496.570
OTHER (LANDFILL)		93.360	82.701
TOTAL (NON-RECYCLED) (WCA) (NI191)	2,074.295	2,579.271	
TOTAL (Non Household Waste) (WCA)	2,769.795	3,312.721	

WCA SUMMARY (LACW)			
		2020/21	2021/22
LACW (REC & COMP)		11,519.799	10,712.944
LACW (NON RECYCLED)		30,238.561	31,722.214
TOTAL LACW (WCA)	41,758.360	42,435.158	

PERFORMANCE INDICATORS			
		2020/21	2021/22
NI192 (Recycling Rate %)		27.8%	25.5%
BVPI 84a (kgs waste per head)		296.2	292.8
NI191 (kgs residual per household)		485	493
NI193 (% MSW (LACW) landfilled)*		11.4%	10.5%
<i>*Indicative. WDA/UA indicator only.</i>			
Recycling Rate (H/H) (WCA + WDA)		38.1%	37.9%
Recycling Rate (HWRC) (WDA)		71.4%	72.4%
<i>NOTE: Recycling Centres includes non household</i>			

WASTE GROWTH			
		2020/21	2021/22
TOTAL HOUSEHOLD (WCA)		9.1%	0.3%
TOTAL HOUSEHOLD (WDA)		-22.0%	16.5%
TOTAL HOUSEHOLD (WCA+WDA)	-0.6%	4.3%	

POPULATION			
		2020/21	2021/22
DWELLING STOCK		131,405	133,333
		58,050	59,090

LACW - Local Authority Collected Waste (Household + Non Household)
ERF: Input - Includes IBA (recovered) and Healthcare Wastes.

MID DEVON

2021/22

Status:

FINAL

Data Source: Statistics Payments and Recharges (SPR). National Statistics available from WasteDataFlow: www.wastedataflow.org

RECYCLED (Household Waste)

		2020/21	2021/22
Glass	Bring Bank	0.000	0.000
	Kerbside	2,697.380	2,614.180
	Third Parties	0.000	0.000
	Recycling Centres	34.660	50.520
	Sub total	2,732.040	2,664.700
Paper & Card	Bring Bank	0.000	0.000
	Kerbside	3,004.220	2,837.954
	Third Parties	10.200	13.750
	Recycling Centres	263.440	319.020
	Sub total	3,277.860	3,170.724
Textiles	Bring Bank	28.501	43.338
	Kerbside	7.912	18.736
	Third Parties	0.000	0.000
	Recycling Centres	36.656	31.255
	Sub total	73.069	93.329
Plastic	Bring Bank	0.000	0.000
	Kerbside	787.980	629.000
	Third Parties	0.000	0.000
	Recycling Centres	26.320	33.200
	Sub total	814.300	662.200
WEEE	Bring Bank	0.000	0.000
	Kerbside	29.191	30.440
	Third Parties	0.000	0.000
	Recycling Centres	570.848	622.280
	Sub total	600.039	652.720
Organic	Food Waste (AD)	3,422.560	3,373.640
	Garden/Food Mx	4,389.930	4,386.560
	Leaf Sweeping	805.280	700.490
	Third Parties	523.110	438.340
	Recycling Centres	1,421.655	1,781.125
	Sub total	10,562.535	10,680.155
Other	Bring Bank	0.000	0.130
	Kerbside	463.896	548.118
	Third Parties	0.000	0.000
	Recycling Centres	1,967.112	2,221.547
	Sub total	2,431.008	2,769.795
Reuse	Bring Bank	0.000	0.000
	Kerbside	0.000	0.000
	Third Parties	35.257	47.330
	Recycling Centres	39.039	94.394
	Sub total	74.296	141.724
SUB TOTALS	Bring Bank	28.501	43.468
	Kerbside (Dry)	6,990.579	6,678.428
	Third Parties	568.567	499.420
	Organic (WCA)	8,617.770	8,460.690
	TOTAL WCA	16,205.417	15,682.006
	TOTAL WDA (Recycling Centres)	4,359.730	5,153.342
TOTAL RECYCLED (Household)	20,565.147	20,835.347	

RECYCLED (Non Household Waste)

		2020/21	2021/22
WCA	TRADE	150.087	200.680
	Fly Tipped	4.620	1.584
	Other	0.000	0.000
	TOTAL WCA	154.707	202.264
WDA	TRADE (Green)	0.075	0.225
	TRADE (Card)	0.000	0.000
	Soil & Rubble	267.440	334.000
	Plasterboard	57.880	61.380
	Other	0.000	0.000
TOTAL WDA	325.395	395.605	
TOTAL RECYCLED (Non Household)		480.102	597.869

NON RECYCLED (Household Waste)

		2020/21	2021/22
Dustbin		13,951.908	13,515.059
MRF (Reject)		22.688	7.357
Bulky Collection		0.000	0.000
Healthcare		16.871	18.220
Street Cleansing		0.000	0.000
IVC (Reject)		0.000	0.000
Other		0.000	0.000
TOTAL WCA		13,991.467	13,540.636
Recycling Centres - Other		20.948	10.676
Recycling Centres - ERF		2,169.252	2,469.007
TOTAL WDA		2,190.200	2,479.683
TOTAL NON RECYCLED (WCA+WDA)		16,181.667	16,020.319

NON RECYCLED (Non Household Waste)

		2020/21	2021/22
TRADE - Commercial & Industrial		2,197.360	2,761.009
TRADE - Construction & Demolition		0.000	0.000
TOTAL WCA - TRADE		2,197.360	2,761.009
Fly Tipped		141.535	120.336
Other (Non Household)		0.000	0.000
TOTAL WCA - OTHER		141.535	120.336
Recycling Centre (WDA)		0.000	0.000
TOTAL NON RECYCLED (WCA+WDA)		2,338.895	2,881.345

WCA SUMMARY (Household)

		2020/21	2021/22
RECYCLED (Incl. Reuse)		7,064.537	6,782.976
COMPOSTED		9,140.880	8,899.030
TOTAL (REC & COMP) (WCA) (NI192)		16,205.417	15,682.006
ENERGY RECOVERY (ERF) (Indicative)		13,970.457	13,540.636
OTHER (LANDFILL)		21.010	0.000
TOTAL (NON-RECYCLED) (WCA) (NI191)		13,991.467	13,540.636
TOTAL (Household Waste) (WCA)		30,196.884	29,222.642

WCA SUMMARY (Non Household)

		2020/21	2021/22
RECYCLED (Incl. REUSE)		154.707	202.264
COMPOSTED		0.000	0.000
TOTAL (REC & COMP) (WCA)		154.707	202.264
ENERGY RECOVERY (ERF) (Indicative)		2,338.895	2,881.345
OTHER (LANDFILL)		0.000	0.000
TOTAL (NON-RECYCLED) (WCA)		2,338.895	2,881.345
TOTAL (Non Household Waste) (WCA)		2,493.602	3,083.609

WCA SUMMARY (LACW)

		2020/21	2021/22
LACW (REC & COMP)		16,360.124	15,884.270
LACW (NON RECYCLED)		16,330.362	16,421.981
TOTAL LACW (WCA)		32,690.486	32,306.251

PERFORMANCE INDICATORS

		2020/21	2021/22
NI192 (Recycling Rate %)		53.7%	53.7%
BVPI 84a (kgs waste per head)		366.4	350.3
NI191 (kgs residual per household)		380	365
NI193 (% MSW (LACW) landfilled)*		0.1%	0.0%
*Indicative. WDA/UA indicator only.			
Recycling Rate (H/H) (WCA + WDA)		56.0%	56.5%
Recycling Rate (HWRC) (WDA)		68.1%	69.1%
NOTE: Recycling Centres includes non household			

WASTE GROWTH

		2020/21	2021/22
TOTAL HOUSEHOLD (WCA)		7.8%	-3.2%
TOTAL HOUSEHOLD (WDA)		-7.2%	16.5%
TOTAL HOUSEHOLD (WCA+WDA)		4.8%	0.3%

POPULATION

		2020/21	2021/22
DWELLING STOCK		82,311	83,290
		36,840	37,130

LACW - Local Authority Collected Waste (Household + Non Household)

ERF: Input - Includes IBA (recovered) and Healthcare Wastes.

NORTH DEVON 2021/22

Status: **FINAL**

Data Source: Statistics Payments and Recharges (SPR). National Statistics available from WasteDataFlow: www.wastedataflow.org

RECYCLED (Household Waste)

		2020/21	2021/22
Glass	Bring Bank	52.240	89.140
	Kerbside	3,350.673	3,232.680
	Third Parties	0.000	0.000
	Recycling Centres	57.940	105.100
	Sub total	3,460.853	3,426.920

		2020/21	2021/22
Paper & Card	Bring Bank	42.280	52.980
	Kerbside	2,880.160	3,150.900
	Third Parties	0.000	0.000
	Recycling Centres	466.120	580.114
	Sub total	3,388.560	3,783.994

		2020/21	2021/22
Textiles	Bring Bank	26.900	17.827
	Kerbside	3.100	23.817
	Third Parties	0.000	0.000
	Recycling Centres	46.158	37.956
	Sub total	76.158	79.600

		2020/21	2021/22
Plastic	Bring Bank	0.000	0.000
	Kerbside	1,066.068	1,096.320
	Third Parties	0.000	0.000
	Recycling Centres	40.320	97.440
	Sub total	1,106.388	1,193.760

		2020/21	2021/22
WEEE	Bring Bank	0.000	0.000
	Kerbside	68.267	70.683
	Third Parties	0.000	0.000
	Recycling Centres	814.791	890.725
	Sub total	883.058	961.408

		2020/21	2021/22
Organic	Food Waste (AD)	3,320.180	3,125.360
	Garden/Food Mx	7,587.710	7,045.430
	Leaf Sweeping	326.440	244.120
	Third Parties	209.840	176.315
	Recycling Centres	1,390.975	1,678.410
	Sub total	12,835.145	12,269.635

		2020/21	2021/22
Other	Bring Bank	22.640	25.420
	Kerbside	567.161	410.130
	Third Parties	0.000	0.000
	Recycling Centres	2,960.806	3,342.770
	Sub total	3,550.607	3,778.320

		2020/21	2021/22
Reuse	Bring Bank	0.000	0.000
	Kerbside	0.000	0.000
	Third Parties	69.034	119.392
	Recycling Centres	19.596	94.363
	Sub total	88.629	213.755

		2020/21	2021/22
SUB TOTALS	Bring Bank	144.060	185.367
	Kerbside (Dry)	7,935.429	7,984.530
	Third Parties	278.874	295.707
	Organic (WCA)	11,234.330	10,414.910
	TOTAL WCA	19,592.693	18,880.514
	TOTAL WDA (Recycling Centres)	5,796.706	6,826.878
TOTAL RECYCLED (Household)	25,389.399	25,707.392	

RECYCLED (Non Household Waste)

		2020/21	2021/22
WCA	TRADE	272.358	599.800
	Fly Tipped	0.000	6.520
	Other	0.000	0.000
	TOTAL WCA	272.358	606.320

		2020/21	2021/22
WDA	TRADE (Green)	0.225	0.300
	TRADE (Card)	0.000	0.500
	Soil & Rubble	338.280	438.800
	Plasterboard	79.880	94.400
	Other	0.000	0.000
TOTAL WDA	418.385	534.000	

TOTAL RECYCLED (Non Household) 690.743 1,140.320

NON RECYCLED (Household Waste)

		2020/21	2021/22
NON RECYCLED (Household Waste)	Dustbin	19,912.648	19,899.631
	MRF (Reject)	0.000	0.640
	Bulky Collection	0.000	26.120
	Healthcare	69.231	70.368
	Street Cleansing	88.420	261.080
	IVC (Reject)	0.000	0.000
	Other	0.000	0.000
	TOTAL WCA	20,070.299	20,257.839
	Recycling Centres - Other	940.558	1,111.550
	Recycling Centres - ERF	1,913.449	2,004.752
	TOTAL WDA	2,854.007	3,116.302
TOTAL NON RECYCLED (WCA+WDA)	22,924.306	23,374.141	

NON RECYCLED (Non Household Waste)

		2020/21	2021/22
NON RECYCLED (Non Household Waste)	TRADE - Commercial & Industrial	2,772.980	3,300.736
	TRADE - Construction & Demolition	0.000	0.000
	TOTAL WCA - TRADE	2,772.980	3,300.736
	Fly Tipped	258.195	286.925
	Other (Non Household)	0.000	0.000
	TOTAL WCA - OTHER	258.195	286.925
	Recycling Centre (WDA)	0.000	0.000
	TOTAL NON RECYCLED (WCA+WDA)	3,031.175	3,587.661

WCA SUMMARY (Household)

	2020/21	2021/22
RECYCLED (Incl. Reuse)	8,148.523	8,289.289
COMPOSTED	11,444.170	10,591.225
TOTAL (REC & COMP) (WCA) (NI192)	19,592.693	18,880.514
ENERGY RECOVERY (ERF) (Indicative)	19,919.779	20,239.699
OTHER (LANDFILL)	150.520	18.140
TOTAL (NON-RECYCLED) (WCA) (NI191)	20,070.299	20,257.839
TOTAL (Household Waste) (WCA)	39,662.992	39,138.353

WCA SUMMARY (Non Household)

	2020/21	2021/22
RECYCLED (Incl. REUSE)	272.358	606.320
COMPOSTED	0.000	0.000
TOTAL (REC & COMP) (WCA)	272.358	606.320
ENERGY RECOVERY (ERF) (Indicative)	3,030.635	3,587.661
OTHER (LANDFILL)	0.540	0.000
TOTAL (NON-RECYCLED) (WCA)	3,031.175	3,587.661
TOTAL (Non Household Waste) (WCA)	3,303.533	4,193.981

WCA SUMMARY (LACW)

	2020/21	2021/22
LACW (REC & COMP)	19,865.051	19,486.834
LACW (NON RECYCLED)	23,101.474	23,845.500
TOTAL LACW (WCA)	42,966.525	43,332.334

PERFORMANCE INDICATORS

	2020/21	2021/22
NI192 (Recycling Rate %)	49.4%	48.2%
BVPI 84a (kgs waste per head)	407.6	397.5
NI191 (kgs residual per household)	427	427
NI193 (% MSW (LACW) landfilled)*	0.4%	0.0%
<i>*Indicative. WDA/UA indicator only.</i>		
Recycling Rate (H/H) (WCA + WDA)	52.6%	52.4%
Recycling Rate (HWRC) (WDA)	68.5%	70.3%
<i>NOTE: Recycling Centres includes non household</i>		

WASTE GROWTH

	2020/21	2021/22
TOTAL HOUSEHOLD (WCA)	5.9%	-1.3%
TOTAL HOUSEHOLD (WDA)	-13.1%	14.9%
TOTAL HOUSEHOLD (WCA+WDA)	1.9%	1.6%

	2020/21	2021/22
POPULATION	97,145	98,170
DWELLING STOCK	46,980	47,440

LACW - Local Authority Collected Waste (Household + Non Household)
ERF: Input - Includes IBA (recovered) and Healthcare Wastes.

SOUTH HAMS

2021/22

Status:

FINAL

Data Source: Statistics Payments and Recharges (SPR). National Statistics available from WasteDataFlow: www.wastedataflow.org

RECYCLED (Household Waste)

		2020/21	2021/22
Glass	Bring Bank	2,834.490	449.620
	Kerbside	84.020	3,205.502
	Third Parties	0.000	0.000
	Recycling Centres	309.790	168.860
	Sub total	3,228.300	3,823.982
Paper & Card	Bring Bank	91.820	0.445
	Kerbside	3,723.344	3,570.282
	Third Parties	0.000	0.000
	Recycling Centres	441.600	609.110
	Sub total	4,256.764	4,179.837
Textiles	Bring Bank	76.394	92.367
	Kerbside	0.000	0.000
	Third Parties	2.664	6.615
	Recycling Centres	55.991	43.462
	Sub total	135.049	142.443
Plastic	Bring Bank	0.000	0.000
	Kerbside	496.770	754.754
	Third Parties	0.000	0.000
	Recycling Centres	78.840	112.910
	Sub total	575.610	867.664
WEEE	Bring Bank	0.000	0.000
	Kerbside	0.000	16.650
	Third Parties	0.000	0.000
	Recycling Centres	785.559	869.644
	Sub total	785.559	886.294
Organic	Food Waste (AD)	29.120	1,896.100
	Garden/Food Mx	11,344.760	4,017.160
	Leaf Sweeping	225.940	95.100
	Third Parties	248.070	319.629
	Recycling Centres	1,642.805	2,888.150
	Sub total	13,490.695	9,216.139
Other	Bring Bank	3.990	0.000
	Kerbside	271.886	320.091
	Third Parties	5.785	15.021
	Recycling Centres	2,688.775	3,178.677
	Sub total	2,970.436	3,513.789
Reuse	Bring Bank	0.000	0.000
	Kerbside	0.000	0.000
	Third Parties	86.353	147.952
	Recycling Centres	34.147	75.357
	Sub total	120.500	223.309
SUB TOTALS	Bring Bank	3,006.694	542.432
	Kerbside (Dry)	4,576.020	7,867.279
	Third Parties	342.872	489.217
	Organic (WCA)	11,599.820	6,008.360
	TOTAL WCA	19,525.406	14,907.288
	TOTAL WDA (Recycling Centres)	6,037.507	7,946.170
TOTAL RECYCLED (Household)	25,562.912	22,853.457	

RECYCLED (Non Household Waste)

		2020/21	2021/22
WCA	TRADE	104.146	133.585
	Fly Tipped	0.000	0.636
	Other	0.000	0.000
	TOTAL WCA	104.146	134.221
WDA	TRADE (Green)	0.075	1.500
	TRADE (Card)	0.000	11.500
	Soil & Rubble	273.140	313.540
	Plasterboard	36.240	49.080
	Other	0.000	0.000
TOTAL WDA	309.455	375.620	
TOTAL RECYCLED (Non Household)		413.601	509.841

NON RECYCLED (Household Waste)

		2020/21	2021/22
Dustbin		15,484.415	16,709.501
	MRF (Reject)	693.690	302.816
	Bulky Collection	0.000	0.000
	Healthcare	20.504	16.044
	Street Cleansing	0.000	0.000
	IVC (Reject)	0.000	0.000
	Other	0.000	0.000
	TOTAL WCA	16,198.609	17,028.361
	Recycling Centres - Other	18.681	22.291
	Recycling Centres - ERF	2,532.619	2,746.795
TOTAL WDA	2,551.300	2,769.086	
TOTAL NON RECYCLED (WCA+WDA)		18,749.909	19,797.447

NON RECYCLED (Non Household Waste)

		2020/21	2021/22
TRADE - Commercial & Industrial		1,449.059	1,420.452
	TRADE - Construction & Demolition	0.000	0.000
TOTAL WCA - TRADE		1,449.059	1,420.452
Fly Tipped		650.505	117.359
Other (Non Household)		0.000	0.000
TOTAL WCA - OTHER		650.505	117.359
Recycling Centre (WDA)		0.000	0.000
TOTAL NON RECYCLED (WCA+WDA)		2,099.564	1,537.811

WCA SUMMARY (Household)

		2020/21	2021/22
RECYCLED (Incl. Reuse)		7,677.516	8,579.299
COMPOSTED		11,847.890	6,327.989
TOTAL (REC & COMP) (WCA)		19,525.406	14,907.288
ENERGY RECOVERY (ERF) (Indicative)		16,126.669	17,028.361
OTHER (LANDFILL)		71.940	0.000
TOTAL (NON-RECYCLED) (WCA)		16,198.609	17,028.361
TOTAL (Household Waste) (WCA)		35,724.014	31,935.649

WCA SUMMARY (Non Household)

		2020/21	2021/22
RECYCLED (Incl. REUSE)		50.226	49.041
COMPOSTED		53.920	85.180
TOTAL (REC & COMP) (WCA) (NI192)		104.146	134.221
ENERGY RECOVERY (ERF) (Indicative)		2,099.564	1,537.811
OTHER (LANDFILL)		0.000	0.000
TOTAL (NON-RECYCLED) (WCA) (NI191)		2,099.564	1,537.811
TOTAL (Non Household Waste) (WCA)		2,203.710	1,672.032

WCA SUMMARY (LACW)

		2020/21	2021/22
LACW (REC & COMP)		19,629.552	15,041.509
LACW (NON RECYCLED)		18,298.173	18,566.172
TOTAL LACW (WCA)		37,927.725	33,607.681

PERFORMANCE INDICATORS

		2020/21	2021/22
NI192 (Recycling Rate %)		54.7%	46.7%
BVPI 84a (kgs waste per head)		409.6	361.4
NI191 (kgs residual per household)		360	376
NI193 (% MSW (LACW) landfilled)*		0.2%	0.0%
*Indicative. WDA/UA indicator only.			
Recycling Rate (H/H) (WCA + WDA)		57.7%	53.6%
Recycling Rate (HWRC) (WDA)		71.3%	75.0%
NOTE: Recycling Centres includes non household			

WASTE GROWTH

		2020/21	2021/22
TOTAL HOUSEHOLD (WCA)		9.9%	-10.6%
TOTAL HOUSEHOLD (WDA)		-4.3%	24.8%
TOTAL HOUSEHOLD (WCA+WDA)		6.8%	-3.8%

		2020/21	2021/22
POPULATION		87,004	87,946
DWELLING STOCK		44,960	45,300

LACW - Local Authority Collected Waste (Household + Non Household)

ERF: Input - Includes IBA (recovered) and Healthcare Wastes.

TEIGNBRIDGE

2021/22

Status:

FINAL

Data Source: Statistics Payments and Recharges (SPR). National Statistics available from WasteDataFlow: www.wastedataflow.org

RECYCLED (Household Waste)

		2020/21	2021/22
Glass	Bring Bank	558.545	525.124
	Kerbside	4,779.771	4,394.160
	Third Parties	0.000	0.000
	Recycling Centres	9.040	19.700
	Sub total	5,347.356	4,938.984
Paper & Card	Bring Bank	1,085.656	1,067.469
	Kerbside	4,375.275	4,432.434
	Third Parties	7.920	2.820
	Recycling Centres	322.480	383.820
	Sub total	5,791.331	5,886.543
Textiles	Bring Bank	319.394	409.057
	Kerbside	11.540	49.390
	Third Parties	0.000	0.000
	Recycling Centres	33.988	33.970
	Sub total	364.922	492.417
Plastic	Bring Bank	104.460	104.413
	Kerbside	1,844.286	1,962.583
	Third Parties	0.000	0.000
	Recycling Centres	34.840	66.280
	Sub total	1,983.586	2,133.276
WEEE	Bring Bank	0.000	0.000
	Kerbside	13.860	17.325
	Third Parties	0.000	0.000
	Recycling Centres	684.931	804.250
	Sub total	698.791	821.575
Organic	Food Waste (AD)	6,292.268	5,964.649
	Garden/Food Mx	8,672.800	8,533.680
	Leaf Sweeping	1,093.680	629.278
	Third Parties	13.840	0.000
	Recycling Centres	2,065.580	2,533.680
Sub total	18,138.168	17,661.287	
Other	Bring Bank	49.364	22.297
	Kerbside	507.088	399.631
	Third Parties	0.000	0.000
	Recycling Centres	2,584.646	3,365.708
	Sub total	3,141.098	3,787.636
Reuse	Bring Bank	0.000	0.000
	Kerbside	0.000	0.000
	Third Parties	26.404	52.416
	Recycling Centres	56.005	108.050
	Sub total	82.409	160.466
SUB TOTALS	Bring Bank	2,117.419	2,128.360
	Kerbside (Dry)	11,531.820	11,255.523
	Third Parties	48.164	55.236
	Organic (WCA)	16,058.748	15,127.607
	TOTAL WCA	29,756.151	28,566.726
TOTAL WDA (Recycling Centres)	5,791.510	7,315.459	
TOTAL RECYCLED (Household)	35,547.661	35,882.185	

RECYCLED (Non Household Waste)

		2020/21	2021/22
WCA	TRADE	7.723	14.232
	Fly Tipped	43.630	22.258
	Other	0.000	0.000
	TOTAL WCA	51.353	36.490
WDA	TRADE (Green)	7.800	1.350
	TRADE (Card)	1.000	0.000
	Soil & Rubble	256.560	319.740
	Plasterboard	59.400	74.160
	Other	0.000	0.000
TOTAL WDA	324.760	395.250	
TOTAL RECYCLED (Non Household)	376.113	431.740	

NON RECYCLED (Household Waste)

		2020/21	2021/22
Dustbin		21,759.317	21,384.439
MRF (Reject)		56.619	34.285
Bulky Collection		41.920	68.750
Healthcare		5.992	6.129
Street Cleansing		1,600.800	1,318.870
IVC (Reject)		0.000	0.000
Other		0.000	0.000
TOTAL WCA	23,464.648	22,812.473	
Recycling Centres - Other		24.833	24.040
Recycling Centres - ERF		2,403.651	2,754.181
TOTAL WDA	2,428.484	2,778.221	
TOTAL NON RECYCLED (WCA+WDA)	25,893.132	25,590.694	

NON RECYCLED (Non Household Waste)

		2020/21	2021/22
TRADE - Commercial & Industrial		62.399	87.754
TRADE - Construction & Demolition		0.000	0.000
TOTAL WCA - TRADE	62.399	87.754	
Fly Tipped		171.655	105.227
Other (Non Household)		182.600	182.600
TOTAL WCA - OTHER	354.255	287.827	
Recycling Centre (WDA)		0.000	0.000
TOTAL NON RECYCLED (WCA+WDA)	416.654	375.581	

WCA SUMMARY (Household)

		2020/21	2021/22
RECYCLED (Incl. Reuse)		13,683.563	13,439.119
COMPOSTED		16,072.588	15,127.607
TOTAL (REC & COMP) (WCA)	29,756.151	28,566.726	
ENERGY RECOVERY (ERF) (Indicative)		23,392.788	22,812.473
OTHER (LANDFILL)		71.860	0.000
TOTAL (NON-RECYCLED) (WCA)	23,464.648	22,812.473	
TOTAL (Household Waste) (WCA)	53,220.799	51,379.199	

WCA SUMMARY (Non Household)

		2020/21	2021/22
RECYCLED (Incl. REUSE)		51.071	36.490
COMPOSTED		0.282	0.000
TOTAL (REC & COMP) (WCA) (NI192)	51.353	36.490	
ENERGY RECOVERY (ERF) (Indicative)		234.054	192.841
OTHER (LANDFILL)		182.600	182.740
TOTAL (NON-RECYCLED) (WCA) (NI191)	416.654	375.581	
TOTAL (Non Household Waste) (WCA)	468.007	412.071	

WCA SUMMARY (LACW)

		2020/21	2021/22
LACW (REC & COMP)		29,807.504	28,603.216
LACW (NON RECYCLED)	23,881.302	23,188.054	
TOTAL LACW (WCA)	53,688.806	51,791.270	

PERFORMANCE INDICATORS

		2020/21	2021/22
NI192 (Recycling Rate %)		55.9%	55.6%
BVPI 84a (kgs waste per head)		396.5	380.1
NI191 (kgs residual per household)		372	359
NI193 (% MSW (LACW) landfilled)*		0.5%	0.4%
<i>*Indicative. WDA/UA indicator only.</i>			
Recycling Rate (H/H) (WCA + WDA)		57.9%	58.4%
Recycling Rate (HWRC) (WDA)		71.6%	73.5%
<i>NOTE: Recycling Centres includes non household</i>			

WASTE GROWTH

		2020/21	2021/22
TOTAL HOUSEHOLD (WCA)		8.7%	-3.5%
TOTAL HOUSEHOLD (WDA)		-28.9%	22.8%
TOTAL HOUSEHOLD (WCA+WDA)	1.5%	0.1%	

POPULATION

		2020/21	2021/22
POPULATION		134,163	135,039
DWELLING STOCK		63,130	63,490

LACW - Local Authority Collected Waste (Household + Non Household)

ERF: Input - Includes IBA (recovered) and Healthcare Wastes.

TORRIDGE 2021/22

Status: **FINAL**

Data Source: Statistics Payments and Recharges (SPR). National Statistics available from WasteDataFlow: www.wastedataflow.org

RECYCLED (Household Waste)			
		2020/21	2021/22
Glass	Bring Bank	114.200	145.760
	Kerbside	2,071.340	1,959.420
	Third Parties	0.000	0.000
	Recycling Centres	42.340	63.280
	Sub total	2,227.880	2,168.460
Paper & Card	Bring Bank	43.400	42.740
	Kerbside	3,049.020	2,884.280
	Third Parties	0.000	1.880
	Recycling Centres	394.189	479.210
	Sub total	3,486.609	3,408.110
Textiles	Bring Bank	35.434	42.007
	Kerbside	0.000	11.345
	Third Parties	0.000	0.000
	Recycling Centres	37.139	42.716
	Sub total	72.573	96.068
Plastic	Bring Bank	0.000	0.000
	Kerbside	370.840	350.800
	Third Parties	0.000	0.000
	Recycling Centres	81.550	98.795
	Sub total	452.390	449.595
WEEE	Bring Bank	0.000	0.000
	Kerbside	18.021	18.235
	Third Parties	0.000	0.000
	Recycling Centres	606.077	688.079
	Sub total	624.098	706.314
Organic	Food Waste (AD)	2,896.900	2,747.560
	Garden/Food Mx	4,981.040	4,610.150
	Leaf Sweeping	787.100	408.520
	Third Parties	0.000	0.000
	Recycling Centres	1,185.280	1,444.295
	Sub total	9,850.320	9,210.525
Other	Bring Bank	0.000	9.460
	Kerbside	222.830	210.820
	Third Parties	0.000	0.000
	Recycling Centres	2,091.213	2,441.660
	Sub total	2,314.043	2,661.940
Reuse	Bring Bank	0.000	0.000
	Kerbside	0.000	0.000
	Third Parties	11.604	38.174
	Recycling Centres	43.913	130.922
	Sub total	55.517	169.096
SUB TOTALS	Bring Bank	193.034	239.967
	Kerbside (Dry)	5,732.051	5,434.900
	Third Parties	11.604	40.054
	Organic (WCA)	8,665.040	7,766.230
	TOTAL WCA	14,601.729	13,481.151
	TOTAL WDA (Recycling Centres)	4,481.702	5,388.956
TOTAL RECYCLED (Household)	19,083.430	18,870.107	

RECYCLED (Non Household Waste)			
		2020/21	2021/22
WCA	TRADE	0.000	0.000
	Fly Tipped	2.012	1.608
	Other	0.000	0.000
	TOTAL WCA	2.012	1.608
WDA	TRADE (Green)	0.150	0.675
	TRADE (Card)	0.000	0.000
	Soil & Rubble	200.551	280.605
	Plasterboard	43.910	59.420
	Other	0.000	0.000
	TOTAL WDA	244.611	340.700
TOTAL RECYCLED (Non Household)	246.623	342.308	

NON RECYCLED (Household Waste)			
		2020/21	2021/22
Dustbin		11,795.997	11,482.245
MRF (Reject)		0.000	0.000
Bulky Collection		0.000	0.220
Healthcare		17.651	16.135
Street Cleansing		32.790	46.040
IVC (Reject)		0.000	0.000
Other		0.000	0.000
TOTAL WCA	11,846.438	11,544.640	
Recycling Centres - Other		1,403.264	1,610.713
Recycling Centres - ERF		306.481	336.070
TOTAL WDA	1,709.744	1,946.783	
TOTAL NON RECYCLED (WCA+WDA)	13,556.182	13,491.423	

NON RECYCLED (Non Household Waste)			
		2020/21	2021/22
TRADE - Commercial & Industrial		5.190	10.323
TRADE - Construction & Demolition		0.000	0.000
TOTAL WCA - TRADE	5.190	10.323	
Fly Tipped		22.833	15.612
Other (Non Household)		0.000	0.000
TOTAL WCA - OTHER	22.833	15.612	
Recycling Centre (WDA)		0.000	0.000
TOTAL NON RECYCLED (WCA+WDA)	28.023	25.935	

WCA SUMMARY (Household)			
		2020/21	2021/22
RECYCLED (Incl. Reuse)		5,936.689	5,714.921
COMPOSTED		8,665.040	7,766.230
TOTAL (REC & COMP) (WCA) (NI192)	14,601.729	13,481.151	
ENERGY RECOVERY (ERF) (Indicative)		11,800.538	11,422.860
OTHER (LANDFILL)		45.900	121.780
TOTAL (NON-RECYCLED) (WCA) (NI191)	11,846.438	11,544.640	
TOTAL (Household Waste) (WCA)	26,448.167	25,025.791	

WCA SUMMARY (Non Household)			
		2020/21	2021/22
RECYCLED (Incl. REUSE)		2.012	1.608
COMPOSTED		0.000	0.000
TOTAL (REC & COMP) (WCA)	2.012	1.608	
ENERGY RECOVERY (ERF) (Indicative)		27.543	10.463
OTHER (LANDFILL)		0.480	15.472
TOTAL (NON-RECYCLED) (WCA)	28.023	25.935	
TOTAL (Non Household Waste) (WCA)	30.035	27.543	

WCA SUMMARY (LACW)			
		2020/21	2021/22
LACW (REC & COMP)		14,603.741	13,482.759
LACW (NON RECYCLED)		11,874.461	11,570.575
TOTAL LACW (WCA)	26,478.202	25,053.334	

PERFORMANCE INDICATORS			
		2020/21	2021/22
NI192 (Recycling Rate %)		55.2%	53.9%
BVPI 84a (kgs waste per head)		387.3	363.6
NI191 (kgs residual per household)		359	349
NI193 (% MSW (LACW) landfilled)*		0.2%	0.5%
<i>*Indicative. WDA/UA indicator only.</i>			
Recycling Rate (H/H) (WCA + WDA)		58.5%	58.3%
Recycling Rate (HWRC) (WDA)		73.4%	74.6%
<i>NOTE: Recycling Centres includes non household</i>			

WASTE GROWTH			
		2020/21	2021/22
TOTAL HOUSEHOLD (WCA)		9.6%	-5.4%
TOTAL HOUSEHOLD (WDA)		-5.7%	18.5%
TOTAL HOUSEHOLD (WCA+WDA)	6.3%	-0.9%	

POPULATION			
		2020/21	2021/22
DWELLING STOCK		68,267	68,719
		32,980	33,050

LACW - Local Authority Collected Waste (Household + Non Household)
ERF: Input - Includes IBA (recovered) and Healthcare Wastes.

WEST DEVON 2021/22

Status: **FINAL**

Data Source: Statistics Payments and Recharges (SPR). National Statistics available from WasteDataFlow: www.wastedataflow.org

RECYCLED (Household Waste)

		2020/21	2021/22
Glass	Bring Bank	181.840	212.920
	Kerbside	2,041.140	1,925.860
	Third Parties	0.000	0.000
	Recycling Centres	17.860	31.880
	Sub total	2,240.840	2,170.660

		2020/21	2021/22
Paper & Card	Bring Bank	59.180	45.240
	Kerbside	1,961.108	1,936.240
	Third Parties	1.585	2.668
	Recycling Centres	303.960	377.960
	Sub total	2,325.833	2,362.108

		2020/21	2021/22
Textiles	Bring Bank	21.122	30.594
	Kerbside	0.000	1.540
	Third Parties	0.000	0.000
	Recycling Centres	35.677	33.295
	Sub total	56.798	65.429

		2020/21	2021/22
Plastic	Bring Bank	16.780	14.840
	Kerbside	675.872	616.530
	Third Parties	0.215	0.870
	Recycling Centres	18.100	41.660
	Sub total	710.967	673.900

		2020/21	2021/22
WEEE	Bring Bank	0.000	0.000
	Kerbside	10.080	8.595
	Third Parties	0.000	0.000
	Recycling Centres	567.877	602.664
	Sub total	577.957	611.259

		2020/21	2021/22
Organic	Food Waste (AD)	2,146.880	2,034.400
	Garden/Food Mx	2,619.520	2,423.060
	Leaf Sweeping	560.660	315.980
	Third Parties	17.010	21.360
	Recycling Centres	1,749.960	2,039.200
	Sub total	7,094.030	6,834.000

		2020/21	2021/22
Other	Bring Bank	7.636	4.108
	Kerbside	182.541	185.795
	Third Parties	10.552	8.407
	Recycling Centres	1,590.249	1,910.738
	Sub total	1,790.978	2,109.048

		2020/21	2021/22
Reuse	Bring Bank	0.000	0.000
	Kerbside	0.000	0.000
	Third Parties	27.399	89.628
	Recycling Centres	21.137	71.413
	Sub total	48.536	161.042

		2020/21	2021/22
SUB TOTALS	Bring Bank	286.558	307.702
	Kerbside (Dry)	4,870.741	4,674.560
	Third Parties	56.761	122.933
	Organic (WCA)	5,327.060	4,773.440
	TOTAL WCA	10,541.120	9,878.635
	TOTAL WDA (Recycling Centres)	4,304.819	5,108.810
TOTAL RECYCLED (Household)	14,845.939	14,987.445	

RECYCLED (Non Household Waste)

		2020/21	2021/22
WCA	TRADE	0.000	0.000
	Fly Tipped	2.498	2.208
	Other	0.000	0.000
	TOTAL WCA	2.498	2.208

		2020/21	2021/22
WDA	TRADE (Green)	0.000	0.000
	TRADE (Card)	0.000	1.500
	Soil & Rubble	219.600	306.680
	Plasterboard	53.500	69.610
	Other	0.000	0.000
TOTAL WDA	273.100	377.790	

TOTAL RECYCLED (Non Household) 275.598 379.998

NON RECYCLED (Household Waste)

		2020/21	2021/22
NON RECYCLED (Household Waste)	Dustbin	8,201.935	8,113.618
	MRF (Reject)	67.441	90.545
	Bulky Collection	35.030	40.640
	Healthcare	28.767	26.081
	Street Cleansing	212.980	118.320
	IVC (Reject)	0.000	0.000
	Other	0.000	0.000
	TOTAL WCA	8,546.153	8,389.204
	Recycling Centres - Other	18.201	23.814
	Recycling Centres - ERF	1,885.957	2,008.438
	TOTAL WDA	1,904.158	2,032.252
TOTAL NON RECYCLED (WCA+WDA)	10,450.311	10,421.456	

NON RECYCLED (Non Household Waste)

		2020/21	2021/22
NON RECYCLED (Non Household Waste)	TRADE - Commercial & Industrial	0.000	0.000
	TRADE - Construction & Demolition	0.000	0.000
	TOTAL WCA - TRADE	0.000	0.000
	Fly Tipped	130.505	30.442
	Other (Non Household)	0.000	0.000
	TOTAL WCA - OTHER	130.505	30.442
	Recycling Centre (WDA)	0.000	0.000
	TOTAL NON RECYCLED (WCA+WDA)	130.505	30.442

WCA SUMMARY (Household)

	2020/21	2021/22
RECYCLED (Incl. Reuse)	5,197.050	5,083.835
COMPOSTED	5,344.070	4,794.800
TOTAL (REC & COMP) (WCA) (NI192)	10,541.120	9,878.635
ENERGY RECOVERY (ERF) (Indicative)	8,478.712	8,389.204
OTHER (LANDFILL)	67.441	0.000
TOTAL (NON-RECYCLED) (WCA) (NI191)	8,546.153	8,389.204
TOTAL (Household Waste) (WCA)	19,087.273	18,267.839

WCA SUMMARY (Non Household)

	2020/21	2021/22
RECYCLED (Incl. REUSE)	2.498	2.208
COMPOSTED	0.000	0.000
TOTAL (REC & COMP) (WCA)	2.498	2.208
ENERGY RECOVERY (ERF) (Indicative)	130.505	29.962
OTHER (LANDFILL)	0.000	0.480
TOTAL (NON-RECYCLED) (WCA)	130.505	30.442
TOTAL (Non Household Waste) (WCA)	133.003	32.650

WCA SUMMARY (LACW)

	2020/21	2021/22
LACW (REC & COMP)	10,543.618	9,880.843
LACW (NON RECYCLED)	8,676.658	8,419.646
TOTAL LACW (WCA)	19,220.276	18,300.489

PERFORMANCE INDICATORS

	2020/21	2021/22
NI192 (Recycling Rate %)	55.2%	54.1%
BVPI 84a (kgs waste per head)	341.6	323.8
NI191 (kgs residual per household)	329	321
NI193 (% MSW (LACW) landfilled)*	0.4%	0.0%
<i>*Indicative. WDA/UA indicator only.</i>		
Recycling Rate (H/H) (WCA + WDA)	58.7%	59.0%
Recycling Rate (HWRC) (WDA)	70.6%	73.0%
<i>NOTE: Recycling Centres includes non household</i>		

WASTE GROWTH

	2020/21	2021/22
TOTAL HOUSEHOLD (WCA)	10.4%	-4.3%
TOTAL HOUSEHOLD (WDA)	-13.3%	15.0%
TOTAL HOUSEHOLD (WCA+WDA)	3.5%	0.4%

	2020/21	2021/22
POPULATION	55,796	56,139
DWELLING STOCK	25,970	26,140

LACW - Local Authority Collected Waste (Household + Non Household)
ERF - Input - Includes IBA (recovered) and Healthcare Wastes.

TORBAY

2021/22

Status:

FINAL

Data Source: Statistics Payments and Recharges (SPR). National Statistics available from WasteDataFlow: www.wastedataflow.org

RECYCLED (Household Waste)

		2020/21	2021/22
Glass	Bring Bank	380.200	349.040
	Kerbside	4,107.590	3,964.070
	Third Parties	0.000	0.000
	Recycling Centres	0.000	0.000
	Sub total	4,487.790	4,313.110
Paper & Card	Bring Bank	75.520	71.340
	Kerbside	5,460.930	5,237.750
	Third Parties	3.180	24.530
	Recycling Centres	0.000	58.120
	Sub total	5,539.630	5,391.740
Textiles	Bring Bank	104.260	147.830
	Kerbside	52.480	48.680
	Third Parties	44.960	43.540
	Recycling Centres	1.280	1.720
	Sub total	202.980	241.770
Plastic	Bring Bank	0.000	0.000
	Kerbside	1,237.430	1,162.620
	Third Parties	0.000	0.000
	Recycling Centres	0.000	0.000
	Sub total	1,237.430	1,162.620
WEEE	Bring Bank	0.000	0.000
	Kerbside	0.000	0.000
	Third Parties	0.000	0.000
	Recycling Centres	567.560	684.900
	Sub total	567.560	684.900
Organic	Food Waste (AD)	3,300.620	3,012.840
	Garden/Food Mx	0.000	0.000
	Leaf Sweeping	0.000	0.000
	Third Parties	30.820	44.360
	Recycling Centres	2,820.380	3,639.680
Sub total	6,151.820	6,696.880	
Other	Bring Bank	0.000	0.000
	Kerbside	625.290	559.970
	Third Parties	0.000	0.000
	Recycling Centres	2,110.980	2,587.650
	Sub total	2,736.270	3,147.620
Reuse	Bring Bank	0.000	0.000
	Kerbside	0.000	0.000
	Third Parties	0.000	0.000
	Recycling Centres	0.000	0.000
	Sub total	0.000	0.000
SUB TOTALS	Bring Bank	559.980	568.210
	Kerbside (Dry)	11,483.720	10,973.090
	Third Parties	78.960	112.430
	Organic (WCA)	3,300.620	3,012.840
	TOTAL (Collected)	15,423.280	14,666.570
	TOTAL (Recycling Centres)	5,500.200	6,972.070
TOTAL RECYCLED (Household)	20,923.480	21,638.640	

RECYCLED (Non Household Waste)

		2020/21	2021/22
TRADE (Green)	TRADE (Green)	873.320	1,334.800
	TRADE (Recycling)	115.080	206.720
	Soil & Rubble	513.500	364.120
	Plasterboard	51.840	39.320
	Other	0.000	0.000
	TOTAL	1,553.740	1,944.960
TOTAL RECYCLED (Non Household)		1,553.740	1,944.960

NON RECYCLED (Household Waste)

		2020/21	2021/22
Dustbin	Dustbin	31,045.360	30,421.920
	MRF (Reject)	32.010	41.740
	Bulky Collection	0.000	0.000
	Healthcare	3.900	4.750
	Street Cleansing	2,579.230	2,335.880
	IVC (Reject)	0.000	0.000
	Other	90.020	105.660
	TOTAL (Collected)	33,750.520	32,909.950
	Recycling Centres - Other	0.000	90.970
	Recycling Centres - ERF	3,901.550	3,643.170
	TOTAL (Recycling Centres)	3,901.550	3,734.140
TOTAL NON RECYCLED		37,652.070	36,644.090

NON RECYCLED (Non Household Waste)

		2020/21	2021/22
TRADE - Commercial & Industrial	TRADE - Commercial & Industrial	3,502.370	4,876.920
	TRADE - Construction & Demolition	0.000	0.000
TOTAL - TRADE	TOTAL - TRADE	3,502.370	4,876.920
Fly Tipped	Fly Tipped	248.240	313.060
	Other (Non Household)	114.680	315.130
TOTAL - OTHER	TOTAL - OTHER	362.920	628.190
Recycling Centre	Recycling Centre	0.000	0.000
TOTAL NON RECYCLED	TOTAL NON RECYCLED	3,865.290	5,505.110

SUMMARY (Household Waste)

		2020/21	2021/22
RECYCLED (Incl. Reuse)	RECYCLED (Incl. Reuse)	14,771.660	14,941.760
	COMPOSTED	6,151.820	6,696.880
TOTAL (REC & COMP) (NI192)	TOTAL (REC & COMP) (NI192)	20,923.480	21,638.640
ENERGY RECOVERY (ERF) (Indicative)	ENERGY RECOVERY (ERF) (Indicative)	37,577.470	36,553.120
OTHER (LANDFILL)	OTHER (LANDFILL)	74.600	90.970
TOTAL (NON-RECYCLED) (NI191)	TOTAL (NON-RECYCLED) (NI191)	37,652.070	36,644.090
TOTAL (Household Waste)	TOTAL (Household Waste)	58,575.550	58,282.730

SUMMARY (Non Household Waste)

		2020/21	2021/22
RECYCLED (Incl. REUSE)	RECYCLED (Incl. REUSE)	680.420	1,334.800
	COMPOSTED	873.320	610.160
TOTAL (REC & COMP)	TOTAL (REC & COMP)	1,553.740	1,944.960
ENERGY RECOVERY (ERF) (Indicative)	ENERGY RECOVERY (ERF) (Indicative)	3,849.170	5,505.110
OTHER (LANDFILL)	OTHER (LANDFILL)	16.120	0.000
TOTAL (NON-RECYCLED)	TOTAL (NON-RECYCLED)	3,865.290	5,505.110
TOTAL (Non Household Waste)	TOTAL (Non Household Waste)	5,419.030	7,450.070

SUMMARY (LACW)

		2020/21	2021/22
LACW (REC & COMP)	LACW (REC & COMP)	22,477.220	23,583.600
LACW (NON RECYCLED)	LACW (NON RECYCLED)	41,517.360	42,149.200
TOTAL LACW	TOTAL LACW	63,994.580	65,732.800

PERFORMANCE INDICATORS

		2020/21	2021/22
NI192 (Recycling Rate %)	NI192 (Recycling Rate %)	35.7%	37.1%
BVPI 84a (kgs waste per head)	BVPI 84a (kgs waste per head)	430.0	427.9
NI191 (kgs residual per household)	NI191 (kgs residual per household)	555	540
NI193 (% MSW (LACW) landfilled)	NI193 (% MSW (LACW) landfilled)	0.1%	0.1%
*Indicative			
Recycling Rate (HWRC)	Recycling Rate (HWRC)	58.5%	65.1%
NOTE: Recycling Centres includes non household			

WASTE GROWTH

		2020/21	2021/22
TOTAL HOUSEHOLD	TOTAL HOUSEHOLD	-0.5%	-0.5%
TOTAL LACW	TOTAL LACW	-4.0%	2.7%

		2020/21	2021/22
POPULATION	POPULATION	136,234	136,218
DWELLING STOCK	DWELLING STOCK	67,870	67,890

LACW - Local Authority Collected Waste (Household + Non Household)

ERF: Input - Includes IBA (recovered) and Healthcare Wastes.