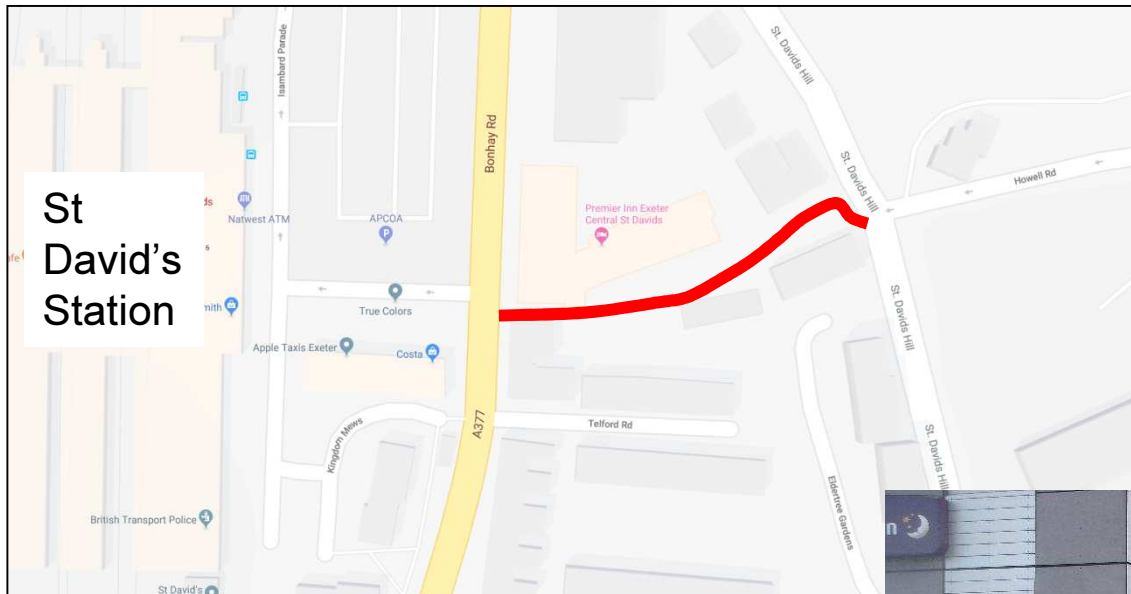


St David's Gateway Enhancements

St Clements Lane

St Clements Lane



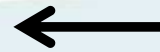
Scheme Background

- Working with Exeter College
- Funding from GWR, matched from DCC
- Main components:
 - Surfacing
 - Lighting
 - Accessibility
 - Signage/Wayfinding
- Short timescale

Surfacing



Existing Surface



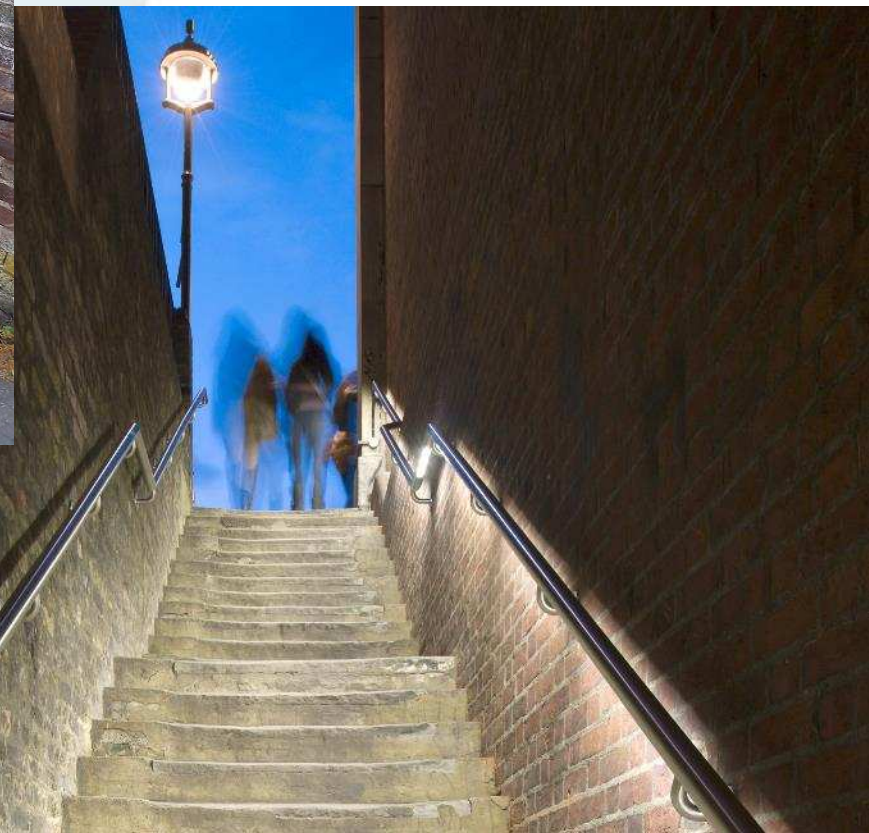
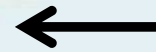
Proposed Surface



Lighting & Handrails



Existing handrail



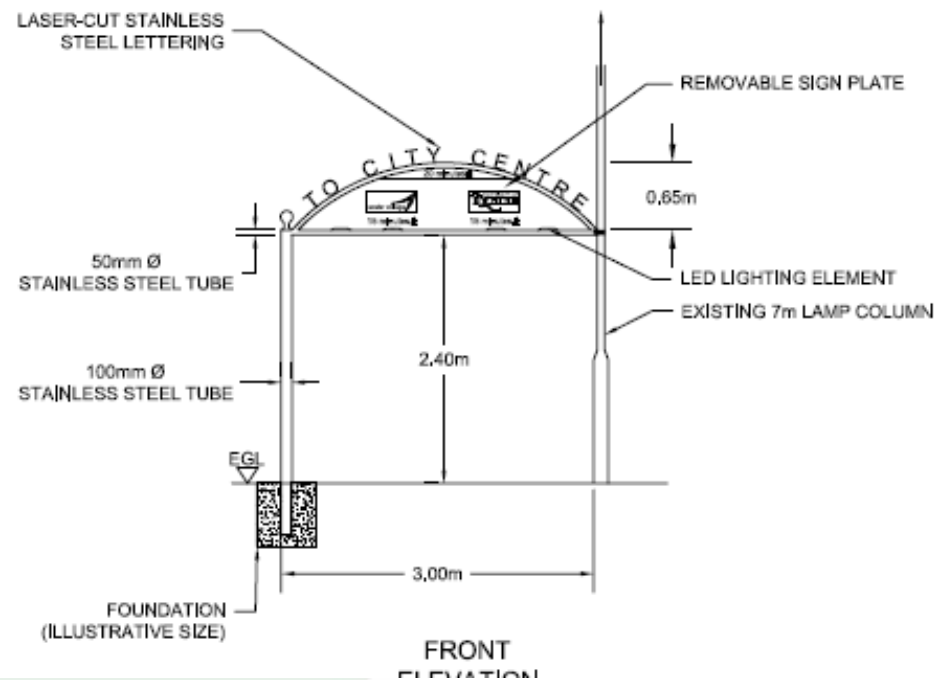
Proposed illuminated handrail



Gateway Signage

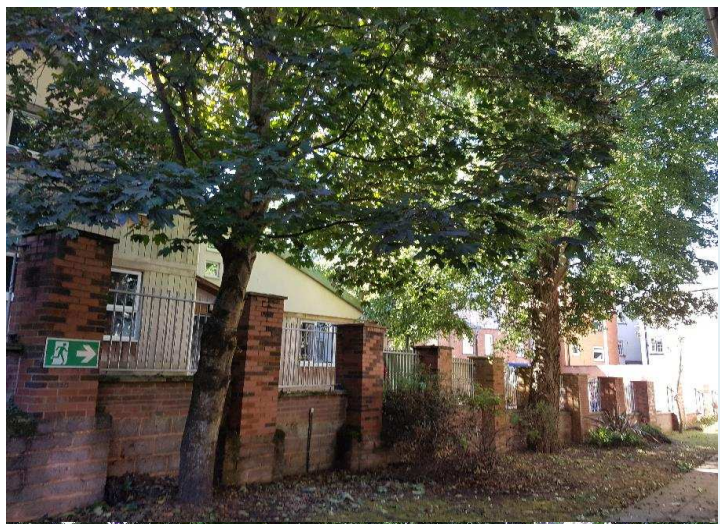


Existing gateway sign



Gateway options

Arboriculture



Existing trees



Before and After Example



Before

After

Other improvements



Road signs and litter bins



Anti-loitering deterrent



Recommendation

It is recommended that the Committee:

- ***(a) Approves, in principle, the construction of proposals for enhancements to St Clements Lane outlined in Section 2;***
- ***(b) Delegates authority to the Head of Planning, Transportation and Environment, in consultation with the Local Member and Chair of HATOC, to make minor amendments to the scheme details and select those options that can be afforded within the available budget; and***
- ***(c) Delegates authority to the Head of Planning, Transportation and Environment, in consultation with the Local Member and Chair of HATOC, to approve for construction once works costs have been confirmed.***