

**Waste Statistics 2017/18**

Report of the Chief Officer for Highways, Infrastructure Development and Waste

***Please note that the following recommendations are subject to consideration and determination by the Committee before taking effect.***

**Recommendation: It is recommended that the Committee notes:**

- (a) the performance of the Devon local authorities and Torbay Council;**
- (b) a reduction of 1.3% in waste arisings in Devon;**
- (c) a reduction of 1.7% in the recycling rate for Devon to 54%.**

**1. Summary**

This report provides members with an overview of Devon's Waste Statistics for 2017/18. Individual authority performance tables can be found in Appendix I to this report.

The National waste statistics published by DEFRA are not yet available and will be reported at the February 2019 meeting of this committee.

**2. Headline Statistics****Devon**

Devon's household waste reduced in 2017/18 to -1.3% which compares to a 1% increase the previous year. Over the previous 10 years, Devon's annual household waste growth has fluctuated between +2% and -11%, however over this period average growth remains below the 1% Resource and Waste Management Strategy projection at +0.5%.

In 2017/18, Devon as Waste Disposal Authority (WDA) experienced a reduction in its recycling rate of 1.7% to 54%.

For Devon's Waste Collection Authorities (WCAs), Teignbridge District Council achieved the highest recycling rate, at 55.4%. The highest recycling rate achieved to date by any Devon authority was 59.9% by West Devon in 2011/12.

Following its change in service, East Devon achieved the greatest year on year recycling rate increase in 2017/18 up 8.1% to 54.2%. This marks the highest performance achieved by the authority to date.

| <b>Headline Statistics</b> | <b>2017/18 (change from 2016/17)</b> |
|----------------------------|--------------------------------------|
| Recycling Rate (Devon)     | 54.0% (-1.7%)                        |
| Waste Growth (Devon)       | -1.3%                                |
| Highest Performing WCA     | Teignbridge @ 55.4%                  |

This was predominantly due to the Household Waste Recycling Centres no longer being able to recycle mattresses and carpets. These two products were always recycled on a

provisional basis but markets were becoming more and more difficult to find and the new contract in April 2017 meant that they became unaffordable. In addition, there has been a tightening of acceptable materials for recycling wood and now only higher grade wood can be recycled with the lower grade sent for recovery.

## Torbay

Torbay encountered an increase in its recycling rate (1.1%) from the previous year to 42.6%. The authority achieved its highest performance in 2012/13 at 44.7%.

Household waste growth remained below the WRMS +1% projection at +0.5% compared to +0.2% the previous year.

| <b>Headline Statistics</b> | <b>2017/18 (change from 2016/17)</b> |
|----------------------------|--------------------------------------|
| Recycling Rate (Torbay)    | 42.6% (1.1%)                         |
| Waste Growth (Torbay)      | +0.5%                                |

### 3. Recycling Rates - Devon and Torbay (2017/18)

Whilst national statistics indicate a slowing in recycling performance overall, individual local authorities have demonstrated that there is scope to improve performance to strive for recycling rates of greater than 60%. East Devon has introduced an improved recycling scheme recently and has consequently shown a tremendous improvement on overall recycling performance. North Devon also introduced significant changes which has led to a decrease in waste arisings and a 1% increase in recycling performance. Torridge has also rolled out a new service over the Summer of 2018/19 and it is anticipated that these benefits will emerge in the 2019/20 statistics.

At a local level, Devon authorities remain committed to improving cost effective waste services for residents, and recycling performance, in a drive to provide more consistent services for all (known as the 'aligned option'). This is covered in more detail in section 6.

**Table 1 – Recycling Rates 2017/18**

| <b>Recycling rates</b> | <b>2017/18</b> | <b>Change (%)</b> | <b>Highest rate (yr)</b> |
|------------------------|----------------|-------------------|--------------------------|
| East Devon             | 54.2%          | +8.1%             | 54.2% (17/18)            |
| Exeter                 | 30.8%          | -0.8%             | 36.9% (10/11)            |
| Mid Devon              | 51.8%          | -1.6%             | 53.4% (16/17)            |
| North Devon            | 45.5%          | +1.0%             | 45.5% (17/18)            |
| South Hams             | 53.9%          | -0.8%             | 57.9% (08/09)            |
| Teignbridge            | 55.4%          | -0.3%             | 57.4% (08/09)            |
| Torridge               | 41.2%          | -0.1%             | 45.0% (14/15)            |
| West Devon             | 51.2%          | -2.6%             | 59.9% (11/12)            |
| Devon                  | 54.0%          | -1.7%             | 55.7% (16/17)            |
| Torbay                 | 42.6%          | +1.1%             | 44.7% (12/13)            |

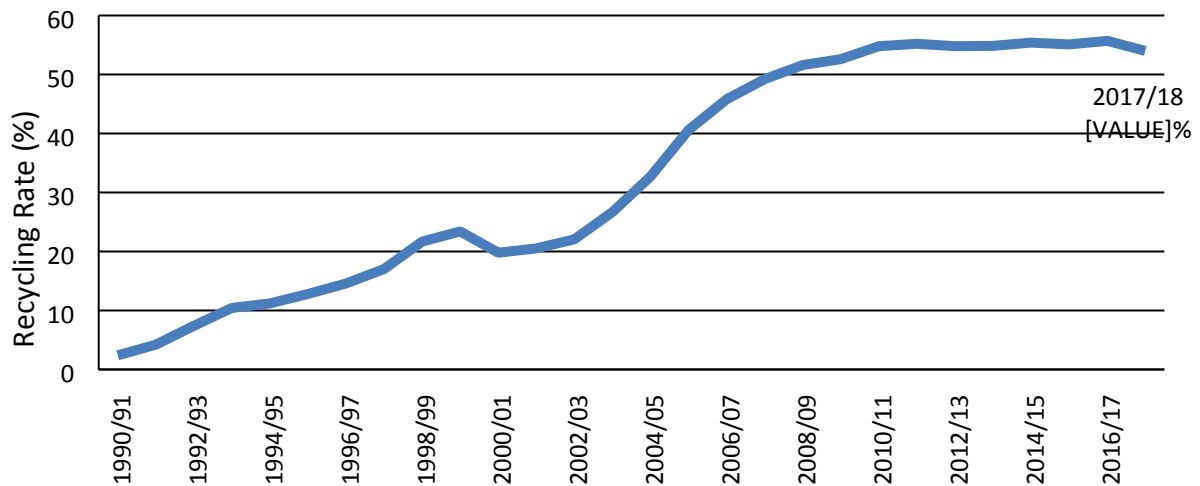
Table 1 shows recycling performance for DASWC authorities for 2017/18 with East Devon (+8.1%), North Devon (+1.0%), and Torbay (+1.1%) increasing their performance compared to 2016/17 data.

All the other district authorities and Exeter City encountered reductions in recycling performance generally due to reductions in 'dry' recyclables collected via kerbside and banks. Devon's Household Waste Recycling Centres rate decreased by 9.4% from 81.4% to

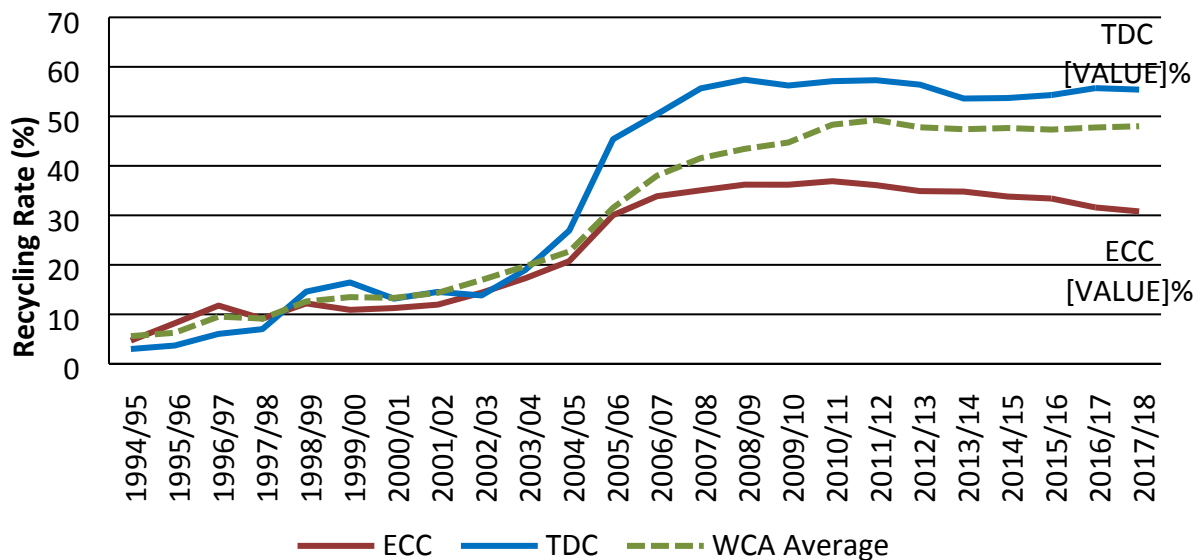
72%. This was in the main due to the carpets and mattresses which are heavy items not having an economic outlet for recycling which therefore had to go for recovery or disposal.

Graph 1, below, tracks the overall Devon recycling rate. Graph 2 tracks the performance of the highest and lowest performers (Teignbridge and Exeter respectively), and Graph 3 tracks each WCA's performance.

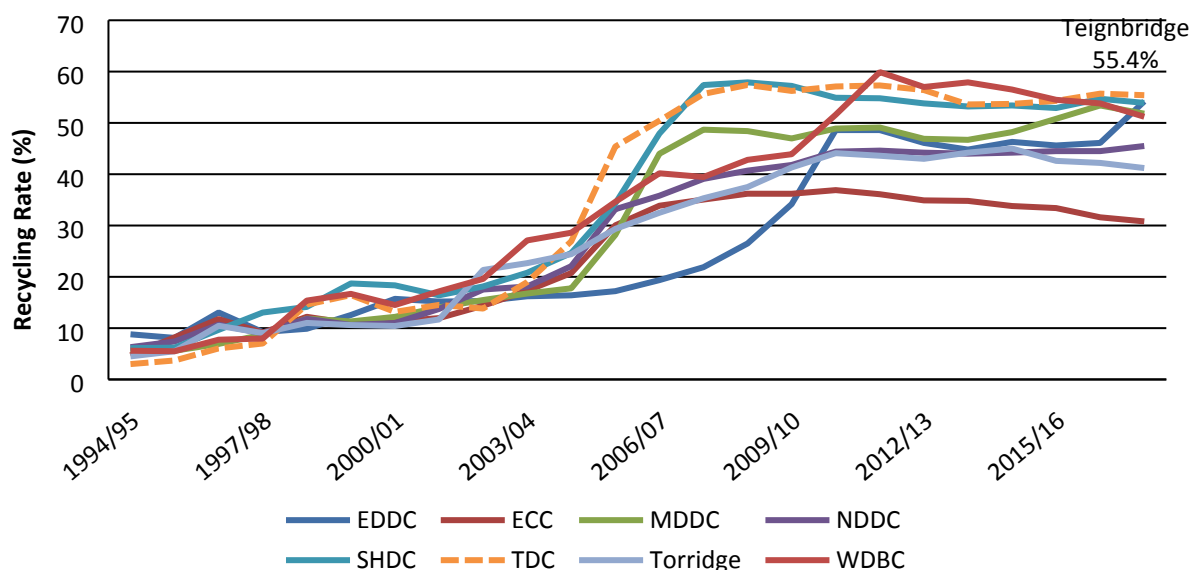
**Graph 1 Recycling Rate - Devon**



**Graph 2 Recycling Rates - Devon WCAs**



**Graph 3 Recycling Rate - WCAs**



In 2017/18, overall recycling tonnage for Devon authorities reduced by 8524 tonnes, with the most notable decrease through HWRCs (-7619t).

The greatest kerbside material gains were for plastics (+886t, 13% increase) and food waste (+6468t, 53% increase).

For Torbay, there were increases in recycling tonnage for all materials except for plastic and small WEEE. Overall 755 tonnes more were recycled than in the previous year. The greatest increase was in garden waste at the Paignton Household Waste Recycling Centre (602t).

East Devon's significant rise was due to them moving to a 3 weekly residual collection across the district, as well as offering mixed plastics and cardboard collections which they hadn't previously. In addition, from June 2018 they are offering a charged for garden waste collection which they have never done before. This may lead to an increase in overall waste arisings but it is too early to assess this yet.

West Devon's recycling rate continues to fall from an all-time Devon high of 59.9% in 2011/12 to the current 51.2%. WDBC underwent a major service change in 2010/11 which saw a transition from a weekly residual collection into an alternate week residual/garden & food waste collection from all households in the Borough increasing the potential for recycling. To ensure a smooth transition and continued high quality customer service, the new service was launched with a comprehensive promotional campaign and this accounted for the high recycling rate of almost 60%.

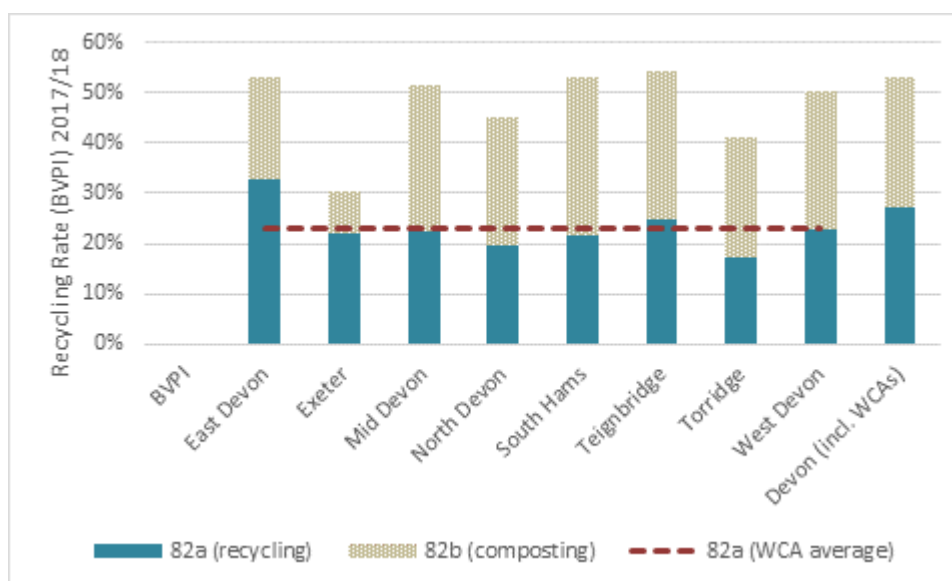
In 2015, the educational resource was reduced. The main impact of this being the loss of the authority's waste education officer. This, and the nation-wide reduction in recycling rate, associated in part to a change in reading habits, accounts for the slow downward trend.

The service is about to undergo a further change over the next 2 years, which is expected to restore the previously high rate.

Whilst recycling rates provide a general overview of performance, they do not indicate other pertinent factors such as composition or overall household waste generation. Graph 4

illustrates former Best Value Performance Indicator (BVPI) dry recycling (BVPI82a) and organic (BVPI82b) waste composition.

**Graph 4 – BVPI 82a / BVPI 82b (2017/18)**



#### 4. Waste Arisings

Former indicator BVPI84a monitors the number of kilogrammes of household waste collected per head and for this reason remains a key indicator for DASWC. Table 2 shows national data for 2016/17 and the Devon data for 2017/18.

**Table 2 – BVPI 84a (2016/17 and 2017/18) kgs waste per head**

| Authority   | 16/17 (kg/head) | 17/18 (kg/head) | +/- Growth (kg/head) |
|-------------|-----------------|-----------------|----------------------|
| East Devon  | 288.9           | 281.1           | -7.8                 |
| Exeter      | 285.1           | 281.6           | -3.5                 |
| Mid Devon   | 355.5           | 349.0           | -6.5                 |
| North Devon | 419.4           | 399.4           | -20.0                |
| South Hams  | 408.1           | 399.5           | -8.6                 |
| Teignbridge | 376.7           | 370.1           | -6.6                 |
| Torridge    | 416.8           | 403.3           | -13.5                |
| West Devon  | 347.7           | 328.9           | -18.8                |
| Devon       | 464.0           | 453.9           | -10.1                |
| Torbay      | 446.3           | 446.5           | +0.2                 |

East Devon and Exeter have consistently performed well through this indicator remaining within the top 10 lowest waste producing WCAs nationally. This has been due in part to not collecting significant quantities of garden waste. However, East Devon is now the lowest waste producing Devon WCA at 281.1kg/hd and this is due to their three weekly collection of residue and enhanced recycling. However, they are now including a charged for garden waste collection so this may affect their low kgs waste per head in the future.

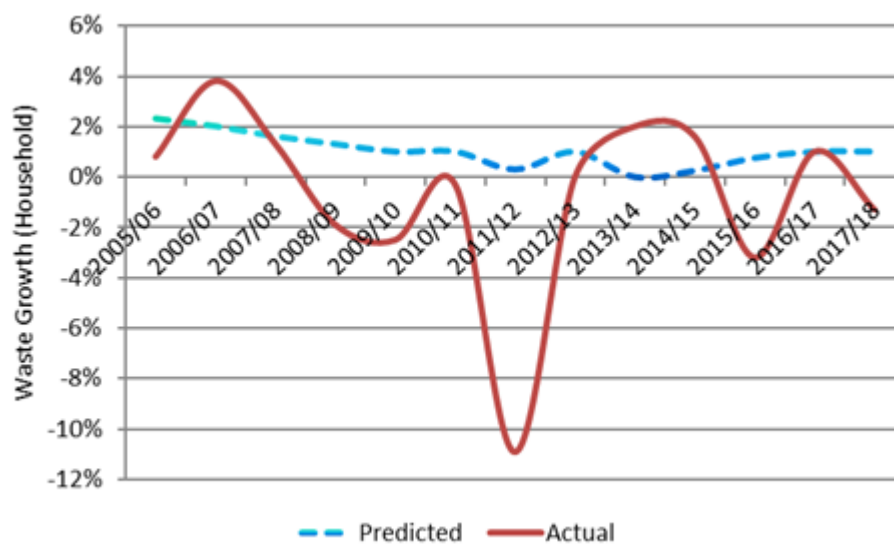
Since their peak (2005 – 2007), waste arisings have reduced considerably for all authorities with Devon’s kg/head now down at 453.9.

Torrige (403kg/hd), North Devon (399kg/hd) and South Hams (399kg/hd) remain the highest waste producers in Devon although the quantities have all reduced. However, nearly all the district authorities are now below 400kg/hd which indicates good progress on waste reduction achieved by service changes and behavioural change communications work.

## 5. Waste Growth

More waste means higher costs and so waste growth beyond anticipated levels is cause for concern for both collection and disposal costs. Graph 5 tracks waste growth using WRMS data and growth predictions demonstrating the volatility of the varied influences on the waste stream.

**Graph 5 – WRMS (Devon) Waste Growth**



The graph illustrates the impact of a number of factors in that reductions in waste from 2007 broadly mirror the economic conditions brought about by the UK economic recession, however local impacts are also evident on this graph indicated by the 11% reduction in waste in 2011 which was a reaction to the introduction of charges for non-household wastes at HWRCs.

Since 2012, Devon's waste has returned to growth at approximately +0.3% annually, and over a 10 year period within +0.5%. Both assessments indicate that household waste growth remains below the WRMS 1% projection. National projections (DEFRA) also indicate 1% waste growth until 2020.

Household waste growth is not uniform across authorities due to the conditions referred to earlier and table 3 shows growth levels by WCA area.

**Table 3 – Household Waste Growth 2016/17 and 17/18**

| Waste growth | 16/17 | 17/18 |
|--------------|-------|-------|
| East Devon   | 4.2%  | -1.5% |
| Exeter       | 2.7%  | 0.7%  |
| Mid Devon    | -5.6% | -1.3% |
| North Devon  | -1.8% | -4.4% |
| South Hams   | -0.1% | -2.1% |
| Teignbridge  | 0.3%  | -1.0% |
| Torrige      | 1.6%  | -2.2% |
| West Devon   | -0.4% | -5.1% |
| Devon        | 1.0%  | -1.3% |
| Torbay       | 0.2%  | 0.5%  |

Most notably, North and West Devon’s overall waste reduced by approximately 1700t and almost 1000t respectively, mainly explained due to their charged for garden waste services.

**6. Current Service Provision and Future Plans**

The Devon Authorities and Torbay are aiming to achieve the ‘aligned option’ which is weekly food waste, weekly recycling, fortnightly residue and charged for garden waste. Progress to date is shown in Table 4.

**Table 4 – Progress toward the ‘Aligned Option’**

| Progress toward the ‘Aligned Option’  |   |   |  |   | Version: August 2018 |
|---|---|---|--|---|----------------------|
|   |  |  |  |  |                      |
|   | Food Waste (Weekly)   | Garden Waste (£/fortnightly)  | Dry Recycling (Weekly)   | Residue (fortnightly)   |                      |
|  |   |   |  |   |                      |
| East Devon ✓  | ✓   | ✓   | ✓  | ✓ (3)   |                      |
| Exeter  | (X)   | ✓   | (f)  | ✓   |                      |
| Mid Devon   | ✓   | ✓   | (f)  | ✓   |                      |
| North Devon ✓   | ✓   | ✓   | ✓  | ✓   |                      |
| South Hams  | (m/f)   | (m/f)   | (f)  | ✓   |                      |
| Teignbridge ✓   | ✓   | ✓   | ✓  | ✓   |                      |
| Torrige ✓   | ✓   | ✓   | ✓  | ✓   |                      |
| West Devon ✓  | ✓   | ✓   | ✓  | ✓   |                      |
| Torbay ✓  | ✓   | (£/O)   | ✓  | ✓   |                      |

YELLOW = aligned option / £ = charged service / m = mixed collection / f = fortnightly / 3 = 3wkly / X = N/A / O = Other

**Devon Authorities Strategic Waste Committee**

**Future Plans**

2017/18 marks the second year of the *Savings Sharing Scheme* (see DASWC minutes 29/06/16 - [HCW/16/33](#)) which aims to encourage WCAs to adopt the Aligned Option benefitting from any savings generated for the County Council to support service provision.

Mid Devon, Teignbridge, East Devon, North Devon and Torrige have signed up for the Savings Sharing Scheme to date. Over £700,000 were shared back with the 4 authorities that were signed up to the scheme in 2017/18.

**Torrige** has rolled out from June 2018 a comprehensive kerbside service including weekly food, cardboard and mixed plastics and incorporating fortnightly residual collections. The initial results of these service improvements look promising and will show in the 2018/19 statistics.

**South Hams and West Devon** are currently re-tendering their collection services to start in April 2019 with proposals for South Hams to collect food waste separately and both authorities to offer mixed plastics.

This report has identified that Devon authorities, with the support of the Savings Sharing Scheme are offering residents a high quality consistent service which increases recycling and reduce overall waste arisings and associated costs.

The Government is due to publish its Resources and Waste Strategy at the end of the year. There has been no formal consultation on the Strategy although Defra have been meeting stakeholder groups such as the Local Government Association (LGA), Association of Directors of Environment, Economy, Planning and Transport (ADEPT), National Association of Waste Disposal Officers (NAWDO) and Local Authorities Recycling Advisory Committee (LARAC) on which the Devon Authorities have representation. The Strategy is likely to focus on the Circular Economy and include key changes to the way waste management is carried out, for example Extended Producer Responsibility (EPR), a Deposit Return Scheme (DRS), consistency of collection services and separate food waste collections. There will be consultation on EPR and DRS and consistency following the publication of the Strategy.

The Government's Strategy is also likely to address means of improving the recyclate market situation which remains volatile making the economics of recycling a challenge. A number of policies including a tax on virgin materials, and product design for recycling are likely to be considered. Devon Authorities are doing their best to get the best prices on the spot markets where appropriate (e.g. plastics), and are also benefiting from the long term contracts in place for paper, glass and textiles. Much of the recyclate is processed in the UK now, for example glass in Yorkshire, paper in Kent, metals in northern England and Wales, plastic in the East Midlands.

## **7. Consultations/Representations/Technical Data**

Data is sourced from individual WCA 'Statistics, Payments and Recharge' returns through Waste Data Flow and directly from WCAs. It is compiled by the County Council working in partnership with the WCAs and Torbay.

## **8. Financial Considerations**

Managing waste toward the top of the waste hierarchy and improving reuse and recycling ensures that all waste is managed in the most cost effective manner.

Failure to report data in accordance with the requirements of the Waste and Emissions Trading Act could lead to penalties being applied by DEFRA.

## **9. Sustainability Considerations**

Monitoring performance enables authorities to assess current services and develop longer term planning to improve performance. The EU Waste Framework Directive places an obligation on authorities to manage waste in accordance with the Waste Hierarchy in addition to economic and environmental reasons to manage waste in a more sustainable way. Diverting waste away from landfill to produce energy also reduces the carbon impact.



## 10. Carbon Impact Considerations

Disposal of waste to landfill in particular, represents a waste of energy and resources, and contributes toward methane emissions. Recycling and composting schemes can contribute toward reducing carbon emissions globally through the use of recycled materials, and diverting organic waste from landfill. Diversion of waste to Energy Recovery Facilities for heat and power generation also reduces the carbon impacts of managing waste.

## 11. Equality Considerations

There are no equality considerations associated with this report.

## 12. Legal Considerations

The Waste and Emissions Trading Act places a legal obligation on Waste Disposal Authorities to keep records and make waste data returns to the Environment Agency through Waste Data Flow.

## 13. Risk Management Considerations

Accurate and timely data ensures that risks associated with proposals or schemes are identified and mitigated.

## 14. Public Health Impact

Effective management of waste reduces the negative implications for public health. Accurate data ensures that baseline data reliably informs future forecasting to ensure that systems, processes and facilities are appropriate and fit for purpose.

Meg Booth  
Chief Officer for Highways, Infrastructure Development and Waste

## Electoral Divisions: All

Local Government Act 1972: List of Background Papers

Contact for enquiries: Annette Dentith

Room No. Matford Offices, County Hall, Exeter. EX2 4QD

Tel No: (01392) 383000

| Background Paper | Date | File Reference |
|------------------|------|----------------|
|------------------|------|----------------|

Nil

ad280918 Waste Statistics 201718  
hk 03 081017

**Appendix I  
To HIW/18/61**

| DEVON  |                   | 2017/18    |   | Version: 21/09/18                         | Status:      | FINAL       |
|--|-------------------|------------|---|---|--------------|-------------|
| <i>Data Source: Statistics Payments and Recharges (SPR). National Statistics available from WasteDataFlow: www.wastedataflow.org</i> |                   |            |   |   |              |             |
| <b>RECYCLED (Household Waste)</b>  |                   |            |   | <b>NON RECYCLED (Household Waste)</b>     |              |             |
|  |                   | 2016/17    | 2017/18                                     |   | 2016/17      | 2017/18     |
| Glass  | Bring Bank        | 5703.030   | 5478.086                                    | Dustbin                                   | 137638.498   | 132043.577  |
|  | Kerbside          | 15914.635  | 16291.206                                   | MRF (Reject)                              | 1448.271     | 2057.737    |
|  | Third Parties     | 0.000      | 0.000                                       | Bulky Collection                          | 103.544      | 108.180     |
|  | Recycling Centres | 938.230    | 1007.490                                    | Healthcare                                | 438.858      | 332.519     |
|  | Sub total         | 22555.895  | 22776.782                                   | Street Cleansing                          | 3921.510     | 4770.800    |
| Paper & Card   | Bring Bank        | 1673.426   | 1492.075                                    | IVC (Reject)                              | 55.800       | 4.949       |
|  | Kerbside          | 28506.804  | 29101.857                                   | Other                                     | 0.000        | 0.000       |
|  | Third Parties     | 488.946    | 300.409                                     | TOTAL WCA                                 | 143606.481   | 139317.762  |
|  | Recycling Centres | 5146.561   | 4470.829                                    | Recycling Centres - Other                 | 6907.999     | 10441.405   |
|  | Sub total         | 35815.737  | 35365.170                                   | Recycling Centres - ERF                   | 9125.350     | 13828.785   |
| Textiles   | Bring Bank        | 579.201    | 618.189                                     | TOTAL WDA                                 | 16033.349    | 24270.190   |
|  | Kerbside          | 348.702    | 382.868                                     | TOTAL NON RECYCLED (WCA+WDA)              | 159639.830   | 163587.952  |
|  | Third Parties     | 31.862     | 101.875                                     | <b>NON RECYCLED (Non Household Waste)</b> |              |             |
|  | Recycling Centres | 822.074    | 830.385                                     |   | 2016/17      | 2017/18     |
|  | Sub total         | 1781.839   | 1933.317                                    | TRADE - Commercial & Industrial           | 12703.204    | 11188.553   |
| Plastic  | Bring Bank        | 127.301    | 122.069                                     | TRADE - Construction & Demolition         | 83.480       | 70.540      |
|  | Kerbside          | 5381.529   | 6298.106                                    | TOTAL WCA - TRADE                         | 12786.684    | 11259.093   |
|  | Third Parties     | 3.731      | 1.551                                       | Fly Tipped                                | 530.639      | 530.990     |
|  | Recycling Centres | 1350.791   | 1327.405                                    | Other (Non Household)                     | 219.548      | 210.020     |
|  | Sub total         | 6863.352   | 7749.131                                    | TOTAL WCA - OTHER                         | 750.187      | 741.010     |
| WEEE   | Bring Bank        | 0.018      | 0.105                                       | Recycling Centre (WDA)                    | 0.625        | 0.000       |
|  | Kerbside          | 158.057    | 240.810                                     | TOTAL NON RECYCLED (WCA+WDA)              | 13537.496    | 12000.103   |
|  | Third Parties     | 0.000      | 0.000                                       | <b>SUMMARY (Household Waste)</b>          |              |             |
|  | Recycling Centres | 7485.917   | 7227.083                                    |   | 2016/17      | 2017/18     |
|  | Sub total         | 7643.992   | 7467.998                                    | RECYCLED (Incl. Reuse)                    | 107,833.525  | 99,894.024  |
| Organic  | Food Waste        | 12136.499  | 18604.472                                   | COMPOSTED                                 | 92,713.389   | 92,128.384  |
|  | Garden/Food Mx    | 46798.358  | 39396.081                                   | TOTAL (REC & COMP)                        | 200,546.914  | 192,022.408 |
|  | Leaf Sweeping     | 7334.600   | 5876.440                                    | ENERGY FROM WASTE (ERF)                   | 100,519.979  | 102,091.434 |
|  | Third Parties     | 1189.422   | 1224.546                                    | OTHER (LANDFILL)                          | 59,119.851   | 61,496.518  |
|  | Recycling Centres | 25254.510  | 27026.845                                   | TOTAL (NON-RECYCLED)                      | 159,639.830  | 163,587.952 |
| Sub total  | 92713.389         | 92128.384  | TOTAL (Household Waste) (WCA+WDA)           | 360,186.744                               | 355,610.360  |             |
| Other  | Bring Bank        | 67.437     | 106.273                                     | <b>SUMMARY (Non Household Waste)</b>      |              |             |
|  | Kerbside          | 3329.499   | 3235.371                                    |   | 2016/17      | 2017/18     |
|  | Third Parties     | 27.752     | 36.224                                      | RECYCLED (Incl. REUSE)                    | 4,522.179    | 4,850.466   |
|  | Recycling Centres | 28177.324  | 19601.942                                   | COMPOSTED                                 | 530.116      | 108.825     |
|  | Sub total         | 31602.012  | 22979.810                                   | TOTAL (REC & COMP)                        | 5,052.295    | 4,959.291   |
| Reuse  | Bring Bank        | 0.000      | 0.000                                       | ENERGY FROM WASTE (ERF)                   | 5,768.374    | 6,643.106   |
|  | Kerbside          | 0.000      | 0.000                                       | OTHER (LANDFILL)                          | 7,769.122    | 5,356.997   |
|  | Third Parties     | 739.953    | 726.260                                     | TOTAL (NON-RECYCLED)                      | 13,537.496   | 12,000.103  |
|  | Recycling Centres | 830.745    | 895.556                                     | TOTAL (Non Household Waste) (WCA+WDA)     | 18,589.791   | 16,959.394  |
|  | Sub total         | 1570.698   | 1621.816                                    | <b>SUMMARY (LACW)</b>                     |              |             |
| SUB TOTALS   | Bring Bank        | 8150.413   | 7816.797                                    |   | 2016/17      | 2017/18     |
|  | Kerbside (Dry)    | 53639.226  | 55550.218                                   | LACW (REC & COMP)                         | 205,599.209  | 196,981.699 |
|  | Third Parties     | 2481.666   | 2390.865                                    | LACW (NON RECYCLED)                       | 173,177.326  | 175,588.055 |
|  | Organic (WCA)     | 66269.457  | 63876.993                                   | TOTAL LACW (WCA+WDA)                      | 378,776.535  | 372,569.754 |
|  | TOTAL WCA         | 130540.762 | 129634.873                                  | <b>PERFORMANCE INDICATORS</b>             |              |             |
| TOTAL WDA (Recycling Centres)  | 70006.152         | 62387.535  |   | 2016/17                                   | 2017/18      |             |
| TOTAL RECYCLED (Household)   | 200546.914        | 192022.408 | <b>NI192 (Recycling Rate %)</b>             | <b>55.7%</b>                              | <b>54.0%</b> |             |
| <b>RECYCLED (Non Household Waste)</b>  |                   |            |   | BVPI 84a (kgs waste per head)             | 459.9        | 449.7       |
|  |                   | 2016/17    | 2017/18                                     | NI191 (kgs residual per household)        | 439          | 445         |
| WCA  | TRADE             | 1511.737   | 1361.257                                    | NI193 (% MSW (LACW) landfilled)*          | 17.7%        | 17.9%       |
|  | Fly Tipped        | 65.363     | 111.618                                     | <i>*Indicative</i>                        |              |             |
|  | Other             | 4.160      | 0.000                                       | Recycling Rate (HWRC) (WDA)               | 82.1%        | 73.1%       |
| TOTAL WCA  | 1581.260          | 1472.875   | NOTE: HWRC Recycling Rate includes all LACW |   |              |             |
| WDA  | TRADE (Green)     | 114.450    | 108.825                                     | <b>WASTE GROWTH</b>                       |              |             |
|  | TRADE (Card)      | 18.500     | 13.000                                      |   | 2016/17      | 2017/18     |
|  | Soil & Rubble     | 2877.508   | 2793.281                                    | TOTAL HOUSEHOLD (WCA)                     | 0.2%         | -1.9%       |
|  | Plasterboard      | 458.775    | 570.800                                     | TOTAL HOUSEHOLD (WDA)                     | 3.4%         | 0.7%        |
|  | Other             | 1.802      | 0.510                                       | TOTAL HOUSEHOLD (WCA+WDA)                 | 1.0%         | -1.3%       |
| TOTAL WDA  | 3471.035          | 3486.416   | <b>POPULATION</b>                           |   |              |             |
| TOTAL RECYCLED (Non Household)   | 5052.295          | 4959.291   |   | 779,834                                   | 787,171      |             |
|  |                   |            |   | <b>DWELLING STOCK</b>                     |              |             |
|  |                   |            |   |   | 363,600      | 367,430     |

LACW - Local Authority Collected Waste (Household + Non Household)

ERF: Input - Includes IBA (recovered) and Healthcare Wastes.

| EAST DEVON   |                   |           |  | 2017/18  |              | Status:      | FINAL      |
|--|-------------------|-----------|--|--|--------------|--------------|------------|
| <i>Data Source: Statistics Payments and Recharges (SPR). National Statistics available from WasteDataFlow: www.wastedataflow.org</i> |                   |           |  |  |              |              |            |
| <b>RECYCLED (Household Waste)</b>  |                   |           |  | <b>NON RECYCLED (Household Waste)</b>                              |              |              |            |
|  |                   | 2016/17   | 2017/18  |  |              | 2016/17      | 2017/18    |
| Glass  | Bring Bank        | 93.140    | 28.940   | Dustbin  |              | 21345.754    | 17822.604  |
|  | Kerbside          | 4450.780  | 4649.460                                       | MRF (Reject)   |              | 0.000        | 114.650    |
|  | Third Parties     | 0.000     | 0.000  | Bulky Collection   |              | 0.000        | 0.000      |
|  | Recycling Centres | 146.340   | 125.920  | Healthcare   |              | 106.602      | 100.910    |
|  | Sub total         | 4690.260  | 4804.320                                       | Street Cleansing   |              | 62.840       | 2.020      |
| Paper & Card   | Bring Bank        | 81.400    | 44.120   | IVC (Reject)   |              | 0.000        | 0.000      |
|  | Kerbside          | 4350.220  | 5916.940                                       | Other  |              | 0.000        | 0.000      |
|  | Third Parties     | 33.298    | 21.810   | TOTAL WCA  |              | 21515.196    | 18040.184  |
|  | Recycling Centres | 1568.940  | 987.330  | Recycling Centres - Other  |              | 2741.241     | 3098.349   |
|  | Sub total         | 6033.858  | 6970.200                                       | Recycling Centres - ERF  |              | 0.000        | 953.980    |
| Textiles   | Bring Bank        | 80.744    | 58.500   | TOTAL WDA  |              | 2741.241     | 4052.329   |
|  | Kerbside          | 102.106   | 176.780  | TOTAL NON RECYCLED (WCA+WDA)                                       |              | 24256.437    | 22092.513  |
|  | Third Parties     | 0.000     | 89.376   |  |              |              |            |
|  | Recycling Centres | 194.934   | 173.215  |  |              |              |            |
|  | Sub total         | 377.784   | 497.871  |  |              |              |            |
| Plastic  | Bring Bank        | 0.000     | 0.000  | <b>NON RECYCLED (Non Household Waste)</b>                          |              |              |            |
|  | Kerbside          | 757.100   | 1455.281                                       |  |              | 2016/17      | 2017/18    |
|  | Third Parties     | 0.000     | 0.020  | TRADE - Commercial & Industrial                                    |              | 123.046      | 53.176     |
|  | Recycling Centres | 385.654   | 302.279  | TRADE - Construction & Demolition                                  |              | 0.000        | 0.000      |
|  | Sub total         | 1142.754  | 1757.580                                       | TOTAL WCA - TRADE  |              | 123.046      | 53.176     |
| WEEE   | Bring Bank        | 0.000     | 0.000  | Fly Tipped   |              | 0.000        | 0.000      |
|  | Kerbside          | 7.605     | 78.420   | Other (Non Household)  |              | 0.000        | 0.000      |
|  | Third Parties     | 0.000     | 0.000  | TOTAL WCA - OTHER  |              | 0.000        | 0.000      |
|  | Recycling Centres | 1369.530  | 1263.427                                       | Recycling Centre (WDA)   |              | 0.000        | 0.000      |
|  | Sub total         | 1377.135  | 1341.847                                       | TOTAL NON RECYCLED (WCA+WDA)                                       |              | 123.046      | 53.176     |
| Organic  | Food Waste        | 5748.560  | 6638.400                                       | <b>SUMMARY (Household Waste)</b>                                   |              |              |            |
|  | Garden/Food Mx    | 376.906   | 0.000  |  |              | 2016/17      | 2017/18    |
|  | Leaf Sweeping     | 1613.440  | 1382.420                                       | RECYCLED (Incl. Reuse)   |              | 10,670.470   | 13,274.520 |
|  | Third Parties     | 9.910     | 13.767   | COMPOSTED  |              | 7,748.816    | 8,034.587  |
|  | Recycling Centres | 9562.915  | 9955.995                                       | TOTAL (REC & COMP) (WCA)   |              | 18,419.286   | 21,309.107 |
| Other  | Bring Bank        | 0.330     | 10.375   | ENERGY RECOVERY (ERF)  |              | 19,635.976   | 14,742.874 |
|  | Kerbside          | 681.580   | 723.071  | OTHER (LANDFILL)   |              | 1,879.220    | 3,297.310  |
|  | Third Parties     | 0.000     | 0.000  | TOTAL (NON-RECYCLED) (WCA)   |              | 21,515.196   | 18,040.184 |
|  | Recycling Centres | 5081.529  | 3408.113                                       | TOTAL (Household Waste) (WCA)                                      |              | 39,934.482   | 39,349.291 |
|  | Sub total         | 5763.439  | 4141.559                                       |  |              |              |            |
| Reuse  | Bring Bank        | 0.000     | 0.000  | <b>SUMMARY (Non Household Waste)</b>                               |              |              |            |
|  | Kerbside          | 0.000     | 0.000  |  |              | 2016/17      | 2017/18    |
|  | Third Parties     | 32.167    | 21.427   | RECYCLED (Incl. REUSE)   |              | 0.000        | 0.500      |
|  | Recycling Centres | 115.540   | 137.357  | COMPOSTED  |              | 0.000        | 0.000      |
|  | Sub total         | 147.707   | 158.784  | TOTAL (REC & COMP) (WCA)   |              | 0.000        | 0.500      |
| SUB TOTALS   | Bring Bank        | 255.614   | 141.935  | ENERGY FROM WASTE (ERF)  |              | 0.000        | 53.176     |
|  | Kerbside (Dry)    | 10349.391 | 12999.952                                      | OTHER (LANDFILL)   |              | 123.05       | 0.00       |
|  | Third Parties     | 75.375    | 146.400  | TOTAL (NON-RECYCLED) (WCA)   |              | 123.046      | 53.176     |
|  | Organic (WCA)     | 7738.906  | 8020.820                                       | TOTAL (Non Household Waste) (WCA)                                  |              | 123.046      | 53.676     |
|  | TOTAL WCA         | 18419.286 | 21309.107                                      |  |              |              |            |
| TOTAL WDA (Recycling Centres)  | 18425.382         | 16353.636 | <b>SUMMARY (LACW)</b>                          |  |              |              |            |
| TOTAL RECYCLED (Household)   | 36844.668         | 37662.743 |  |  | 2016/17      | 2017/18      |            |
|  |                   |           | LACW (REC & COMP)                              |  | 18,419.286   | 21,309.607   |            |
|  |                   |           | LACW (NON RECYCLED)                            |  | 21,638.242   | 18,093.360   |            |
|  |                   |           | TOTAL LACW (WCA)                               |  | 40,057.528   | 39,402.967   |            |
|  |                   |           | PERFORMANCE INDICATORS                         |  | 2016/17      | 2017/18      |            |
|  |                   |           | <b>NI192 (Recycling Rate %)</b>                |  | <b>46.1%</b> | <b>54.2%</b> |            |
|  |                   |           | BVPI 84a (kgs waste per head)                  |  | 285.2        | 276.4        |            |
|  |                   |           | NI191 (kgs residual per household)             |  | 320          | 265          |            |
|  |                   |           | NI193 (% MSW (LACW) landfilled)*               |  | 5.0%         | 8.4%         |            |
|  |                   |           | *Indicative. WDA/UA indicator only.            |  |              |              |            |
|  |                   |           | Recycling Rate (H/H) (WCA + WDA)               |  | 60.3%        | 63.0%        |            |
|  |                   |           | Recycling Rate (HWRC) (WDA)                    |  | 87.4%        | 80.7%        |            |
|  |                   |           | NOTE: Recycling Centres includes non household |  |              |              |            |
|  |                   |           | <b>RECYCLED (Non Household Waste)</b>          |  |              |              |            |
|  |                   | 2016/17   | 2017/18  | <b>WASTE GROWTH</b>  |              |              |            |
| WCA  | TRADE             | 0.000     | 0.000  |  |              | 2016/17      | 2017/18    |
|  | Fly Tipped        | 0.000     | 0.500  | TOTAL HOUSEHOLD (WCA)  |              | 4.2%         | -1.5%      |
|  | Other             | 0.000     | 0.000  | TOTAL HOUSEHOLD (WDA)  |              | 0.5%         | -3.6%      |
| TOTAL WCA  |                   | 0.000     | 0.500  | TOTAL HOUSEHOLD (WCA+WDA)  |              | 2.9%         | -2.2%      |
| WDA  | TRADE (Green)     | 30.625    | 32.125   | <b>POPULATION</b>  |              |              |            |
|  | TRADE (Card)      | 2.000     | 0.500  |  |              | 139,908      | 142,265    |
|  | Soil & Rubble     | 535.660   | 497.040  | <b>DWELLING STOCK</b>  |              |              |            |
|  | Plasterboard      | 81.620    | 101.160  |  |              | 67,300       | 68,070     |
|  | Other             | 0.000     | 0.000  | LACW - Local Authority Collected Waste (Household + Non Household) |              |              |            |
| TOTAL WDA  |                   | 649.905   | 630.825  | ERF: Input - Includes IBA (recovered) and Healthcare Wastes.       |              |              |            |
| TOTAL RECYCLED (Non Household)   |                   | 649.905   | 631.325  |  |              |              |            |

| EXETER   |                   | 2017/18   |                                       | Status:   | FINAL      |            |
|--|-------------------|-----------|---------------------------------------|---|------------|------------|
| <i>Data Source: Statistics Payments and Recharges (SPR). National Statistics available from WasteDataFlow: www.wastedataflow.org</i> |                   |           |                                       |   |            |            |
| <b>RECYCLED (Household Waste)</b>  |                   |           | <b>NON RECYCLED (Household Waste)</b> |   |            |            |
|  |                   | 2016/17   | 2017/18                               | 2016/17   | 2017/18    |            |
| Glass  | Bring Bank        | 2126.080  | 2190.970                              | Dustbin   | 22049.250  | 22177.650  |
|  | Kerbside          | 52.650    | 79.630                                | MRF (Reject)  | 1177.580   | 1519.900   |
|  | Third Parties     | 0.000     | 0.000                                 | Bulky Collection                                      | 0.000      | 15.240     |
|  | Recycling Centres | 283.920   | 296.110                               | Healthcare  | 4.305      | 3.667      |
|  | Sub total         | 2462.650  | 2566.710                              | Street Cleansing                                      | 1663.580   | 1651.020   |
| Paper & Card   | Bring Bank        | 138.460   | 127.260                               | IVC (Reject)  | 0.000      | 0.000      |
|  | Kerbside          | 4483.590  | 4045.260                              | Other   | 0.000      | 0.000      |
|  | Third Parties     | 324.170   | 146.040                               | TOTAL WCA   | 24894.715  | 25367.477  |
|  | Recycling Centres | 884.341   | 788.800                               | Recycling Centres - Other                             | 500.999    | 1564.790   |
|  | Sub total         | 5830.561  | 5107.360                              | Recycling Centres - ERF                               | 2456.560   | 3118.775   |
| Textiles   | Bring Bank        | 85.730    | 107.945                               | TOTAL WDA   | 2957.559   | 4683.565   |
|  | Kerbside          | 7.100     | 5.500                                 | TOTAL NON RECYCLED (WCA+WDA)                          | 27852.274  | 30051.042  |
|  | Third Parties     | 0.000     | 0.000                                 | <b>NON RECYCLED (Non Household Waste)</b>             |            |            |
|  | Recycling Centres | 153.136   | 169.155                               |   | 2016/17    | 2017/18    |
|  | Sub total         | 245.966   | 282.600                               | TRADE - Commercial & Industrial                       | 2438.092   | 2040.870   |
| Plastic  | Bring Bank        | 0.000     | 0.000                                 | TRADE - Construction & Demolition                     | 0.000      | 0.000      |
|  | Kerbside          | 993.890   | 990.240                               | TOTAL WCA - TRADE                                     | 2438.092   | 2040.870   |
|  | Third Parties     | 0.000     | 0.000                                 | Fly Tipped  | 3.900      | 0.000      |
|  | Recycling Centres | 198.139   | 189.998                               | Other (Non Household)                                 | 4.048      | 0.000      |
|  | Sub total         | 1192.029  | 1180.238                              | TOTAL WCA - OTHER                                     | 7.948      | 0.000      |
| WEEE   | Bring Bank        | 0.000     | 0.000                                 | Recycling Centre (WDA)                                | 0.625      | 0.000      |
|  | Kerbside          | 12.240    | 12.195                                | TOTAL NON RECYCLED (WCA+WDA)                          | 2446.665   | 2040.870   |
|  | Third Parties     | 0.000     | 0.000                                 | <b>SUMMARY (Household Waste)</b>                      |            |            |
|  | Recycling Centres | 1349.092  | 1262.785                              |   | 2016/17    | 2017/18    |
|  | Sub total         | 1361.332  | 1274.980                              | RECYCLED (Incl. Reuse)                                | 8,768.946  | 8,256.178  |
| Organic  | Food Waste        | 0.000     | 0.000                                 | COMPOSTED   | 2,755.810  | 3,047.580  |
|  | Garden/Food Mx    | 2517.380  | 2755.200                              | TOTAL (REC & COMP) (WCA)                              | 11,524.756 | 11,303.758 |
|  | Leaf Sweeping     | 238.430   | 292.380                               | ENERGY RECOVERY (ERF)                                 | 23,145.895 | 22,193.197 |
|  | Third Parties     | 0.000     | 0.000                                 | OTHER (LANDFILL)                                      | 1,748.820  | 3,174.280  |
|  | Recycling Centres | 4376.620  | 4702.250                              | TOTAL (NON-RECYCLED) (WCA)                            | 24,894.715 | 25,367.477 |
| Sub total  | 7132.430          | 7749.830  | TOTAL (Household Waste) (WCA)         | 36,419.471  | 36,671.235 |            |
| Other  | Bring Bank        | 4.030     | 3.640                                 | <b>SUMMARY (Non Household Waste)</b>                  |            |            |
|  | Kerbside          | 411.980   | 431.520                               |   | 2016/17    | 2017/18    |
|  | Third Parties     | 0.000     | 0.000                                 | RECYCLED (Incl. REUSE)                                | 538.290    | 560.550    |
|  | Recycling Centres | 5909.613  | 3837.786                              | COMPOSTED   | 0.000      | 0.000      |
|  | Sub total         | 6325.623  | 4272.946                              | TOTAL (REC & COMP) (WCA)                              | 538.290    | 560.550    |
| Reuse  | Bring Bank        | 0.000     | 0.000                                 | ENERGY FROM WASTE (ERF)                               | 2,225.172  | 1,785.210  |
|  | Kerbside          | 0.000     | 0.000                                 | OTHER (LANDFILL)                                      | 220.868    | 255.660    |
|  | Third Parties     | 129.026   | 115.978                               | TOTAL (NON-RECYCLED) (WCA)                            | 2,446.040  | 2,040.870  |
|  | Recycling Centres | 274.910   | 247.926                               | TOTAL (Non Household Waste) (WCA)                     | 2,984.330  | 2,601.420  |
|  | Sub total         | 403.936   | 363.904                               | <b>SUMMARY (LACW)</b>                                 |            |            |
| SUB TOTALS   | Bring Bank        | 2354.300  | 2429.815                              |   | 2016/17    | 2017/18    |
|  | Kerbside (Dry)    | 5961.450  | 5564.345                              | LACW (REC & COMP)                                     | 12,063.046 | 11,864.308 |
|  | Third Parties     | 453.196   | 262.018                               | LACW (NON RECYCLED)                                   | 27,340.755 | 27,408.347 |
|  | Organic (WCA)     | 2755.810  | 3047.580                              | TOTAL LACW (WCA)                                      | 39,403.801 | 39,272.655 |
|  | TOTAL WCA         | 11524.756 | 11303.758                             | <b>PERFORMANCE INDICATORS</b>                         |            |            |
| TOTAL WDA (Recycling Centres)  | 13429.771         | 11494.810 |                                       | 2016/17   | 2017/18    |            |
| TOTAL RECYCLED (Household)   | 24954.527         | 22798.568 | NI192 (Recycling Rate %)              | 31.6%   | 30.8%      |            |
| <b>RECYCLED (Non Household Waste)</b>  |                   |           | <b>RECYCLED (Non Household Waste)</b> |   |            |            |
|  |                   | 2016/17   | 2017/18                               | BVPI 84a (kgs waste per head)                         | 279.6      | 283.6      |
| WCA  | TRADE             | 489.700   | 513.260                               | NI191 (kgs residual per household)                    | 452        | 454        |
|  | Fly Tipped        | 48.590    | 47.290                                | NI193 (% MSW (LACW) landfilled)*                      | 5.0%       | 8.7%       |
|  | Other             | 0.000     | 0.000                                 | <i>*Indicative. WDA/UA indicator only.</i>            |            |            |
| TOTAL WCA  | 538.290           | 560.550   | Recycling Rate (H/H) (WCA + WDA)      | 47.3%   | 43.1%      |            |
| WDA  | TRADE (Green)     | 50.700    | 35.200                                | Recycling Rate (HWRC) (WDA)                           | 83.0%      | 72.4%      |
|  | TRADE (Card)      | 0.000     | 0.000                                 | <i>NOTE: Recycling Centres includes non household</i> |            |            |
|  | Soil & Rubble     | 814.645   | 649.620                               | <b>WASTE GROWTH</b>                                   |            |            |
|  | Plasterboard      | 105.005   | 106.960                               |   | 2016/17    | 2017/18    |
|  | Other             | 1.515     | 0.510                                 | TOTAL HOUSEHOLD (WCA)                                 | 2.7%       | 0.7%       |
| TOTAL WDA  | 971.865           | 792.290   | TOTAL HOUSEHOLD (WDA)                 | 3.3%  | -1.3%      |            |
| TOTAL RECYCLED (Non Household)   | 1510.155          | 1352.840  | TOTAL HOUSEHOLD (WCA+WDA)             | 2.9%  | 0.1%       |            |
|  |                   |           | <b>POPULATION</b>                     |   |            |            |
|  |                   |           | DWELLING STOCK                        |   |            |            |
|  |                   |           | 129,801                               |   |            |            |
|  |                   |           | 55,070                                |   |            |            |
|  |                   |           | 128,916                               |   |            |            |
|  |                   |           | 55,930                                |   |            |            |
| LACW - Local Authority Collected Waste (Household + Non Household)   |                   |           |                                       |   |            |            |
| ERF: Input - Includes IBA (recovered) and Healthcare Wastes.   |                   |           |                                       |   |            |            |

| MID DEVON  |                           | 2017/18           |                  | Status: | FINAL |
|--|---------------------------|-------------------|------------------|---------|-------|
| <i>Data Source: Statistics Payments and Recharges (SPR). National Statistics available from WasteDataFlow: www.wastedataflow.org</i> |                           |                   |                  |         |       |
| <b>RECYCLED (Household Waste)</b>  |                           |                   | 2016/17          | 2017/18 |       |
| Glass  | Bring Bank                | 121.250           | 125.000          |         |       |
|  | Kerbside                  | 2029.300          | 2013.000         |         |       |
|  | Third Parties             | 0.000             | 0.000            |         |       |
|  | Recycling Centres         | 58.840            | 58.120           |         |       |
|  | <b>Sub total</b>          | <b>2209.390</b>   | <b>2196.120</b>  |         |       |
| Paper & Card   | Bring Bank                | 79.650            | 72.900           |         |       |
|  | Kerbside                  | 2997.900          | 2943.060         |         |       |
|  | Third Parties             | 39.400            | 25.580           |         |       |
|  | Recycling Centres         | 336.260           | 349.530          |         |       |
|  | <b>Sub total</b>          | <b>3453.210</b>   | <b>3391.070</b>  |         |       |
| Textiles   | Bring Bank                | 28.520            | 30.538           |         |       |
|  | Kerbside                  | 63.770            | 41.180           |         |       |
|  | Third Parties             | 0.000             | 0.000            |         |       |
|  | Recycling Centres         | 48.205            | 45.475           |         |       |
|  | <b>Sub total</b>          | <b>140.495</b>    | <b>117.193</b>   |         |       |
| Plastic  | Bring Bank                | 0.000             | 0.000            |         |       |
|  | Kerbside                  | 677.660           | 717.171          |         |       |
|  | Third Parties             | 3.088             | 0.000            |         |       |
|  | Recycling Centres         | 134.861           | 132.898          |         |       |
|  | <b>Sub total</b>          | <b>815.609</b>    | <b>850.069</b>   |         |       |
| WEEE   | Bring Bank                | 0.000             | 0.000            |         |       |
|  | Kerbside                  | 21.085            | 11.325           |         |       |
|  | Third Parties             | 0.000             | 0.000            |         |       |
|  | Recycling Centres         | 637.833           | 632.167          |         |       |
|  | <b>Sub total</b>          | <b>658.918</b>    | <b>643.492</b>   |         |       |
| Organic  | Food Waste                | 0.000             | 2489.910         |         |       |
|  | Garden/Food Mx            | 6718.520          | 4034.240         |         |       |
|  | Leaf Sweeping             | 1319.920          | 894.700          |         |       |
|  | Third Parties             | 625.591           | 643.610          |         |       |
|  | Recycling Centres         | 1672.470          | 1730.770         |         |       |
| <b>Sub total</b>   | <b>10336.501</b>          | <b>9793.230</b>   |                  |         |       |
| Other  | Bring Bank                | 4.000             | 4.912            |         |       |
|  | Kerbside                  | 336.117           | 334.323          |         |       |
|  | Third Parties             | 9.100             | 0.000            |         |       |
|  | Recycling Centres         | 2171.091          | 1616.372         |         |       |
|  | <b>Sub total</b>          | <b>2520.308</b>   | <b>1955.607</b>  |         |       |
| Reuse  | Bring Bank                | 0.000             | 0.000            |         |       |
|  | Kerbside                  | 0.000             | 0.000            |         |       |
|  | Third Parties             | 64.061            | 108.000          |         |       |
|  | Recycling Centres         | 20.820            | 34.473           |         |       |
|  | <b>Sub total</b>          | <b>84.881</b>     | <b>142.473</b>   |         |       |
| SUB TOTALS   | Bring Bank                | 233.420           | 233.350          |         |       |
|  | Kerbside (Dry)            | 6125.832          | 6060.059         |         |       |
|  | Third Parties             | 741.240           | 777.190          |         |       |
|  | Organic (WCA)             | 8038.440          | 7418.850         |         |       |
|  | <b>TOTAL WCA</b>          | <b>15138.932</b>  | <b>14489.449</b> |         |       |
| <b>TOTAL WDA (Recycling Centres)</b>   | <b>5080.380</b>           | <b>4599.805</b>   |                  |         |       |
| <b>TOTAL RECYCLED (Household)</b>  | <b>20219.312</b>          | <b>19089.254</b>  |                  |         |       |
| <b>RECYCLED (Non Household Waste)</b>  |                           |                   | 2016/17          | 2017/18 |       |
| WCA  | TRADE                     | 129.615           | 152.110          |         |       |
|  | Fly Tipped                | 1.178             | 2.196            |         |       |
|  | Other                     | 0.000             | 0.000            |         |       |
|  | <b>TOTAL WCA</b>          | <b>130.793</b>    | <b>154.306</b>   |         |       |
| WDA  | TRADE (Green)             | 0.000             | 0.150            |         |       |
|  | TRADE (Card)              | 0.000             | 0.000            |         |       |
|  | Soil & Rubble             | 214.680           | 253.760          |         |       |
|  | Plasterboard              | 41.550            | 63.040           |         |       |
|  | Other                     | 0.038             | 0.000            |         |       |
| <b>TOTAL WDA</b>   | <b>256.268</b>            | <b>316.950</b>    |                  |         |       |
| <b>TOTAL RECYCLED (Non Household)</b>  | <b>387.061</b>            | <b>471.256</b>    |                  |         |       |
| <b>NON RECYCLED (Household Waste)</b>  |                           |                   | 2016/17          | 2017/18 |       |
| Dustbin  |                           | 13112.525         | 13044.807        |         |       |
|  | MRF (Reject)              | 0.000             | 0.000            |         |       |
|  | Bulky Collection          | 33.644            | 44.540           |         |       |
|  | Healthcare                | 33.589            | 13.585           |         |       |
|  | Street Cleansing          | 6.460             | 364.660          |         |       |
|  | IVC (Reject)              | 3.400             | 0.000            |         |       |
|  | Other                     | 0.000             | 0.000            |         |       |
|  | <b>TOTAL WCA</b>          | <b>13189.618</b>  | <b>13467.592</b> |         |       |
|  | Recycling Centres - Other | 1449.516          | 1831.206         |         |       |
|  | Recycling Centres - ERF   | 0.000             | 426.144          |         |       |
| <b>TOTAL WDA</b>   | <b>1449.516</b>           | <b>2257.350</b>   |                  |         |       |
| <b>TOTAL NON RECYCLED (WCA+WDA)</b>  | <b>14639.134</b>          | <b>15724.942</b>  |                  |         |       |
| <b>NON RECYCLED (Non Household Waste)</b>  |                           |                   | 2016/17          | 2017/18 |       |
| TRADE - Commercial & Industrial  |                           | 3289.905          | 3105.983         |         |       |
| TRADE - Construction & Demolition  |                           | 83.480            | 70.540           |         |       |
| <b>TOTAL WCA - TRADE</b>   | <b>3373.385</b>           | <b>3176.523</b>   |                  |         |       |
| Fly Tipped   |                           | 7.619             | 55.590           |         |       |
| Other (Non Household)  |                           | 5.480             | 0.000            |         |       |
| <b>TOTAL WCA - OTHER</b>   | <b>13.099</b>             | <b>55.590</b>     |                  |         |       |
| Recycling Centre (WDA)   |                           | 0.000             | 0.000            |         |       |
| <b>TOTAL NON RECYCLED (WCA+WDA)</b>  | <b>3386.484</b>           | <b>3232.113</b>   |                  |         |       |
| <b>SUMMARY (Household Waste)</b>   |                           |                   | 2016/17          | 2017/18 |       |
| RECYCLED (Incl. Reuse)   |                           | 6,474.901         | 6,426.989        |         |       |
| COMPOSTED  |                           | 8,664.031         | 8,062.460        |         |       |
| <b>TOTAL (REC &amp; COMP) (WCA)</b>  | <b>15,138.932</b>         | <b>14,489.449</b> |                  |         |       |
| ENERGY RECOVERY (ERF)  |                           | 2,769.113         | 5,407.399        |         |       |
| OTHER (LANDFILL)   |                           | 10,420.505        | 8,060.193        |         |       |
| <b>TOTAL (NON-RECYCLED) (WCA)</b>  | <b>13,189.618</b>         | <b>13,467.592</b> |                  |         |       |
| <b>TOTAL (Household Waste) (WCA)</b>   | <b>28,328.550</b>         | <b>27,957.041</b> |                  |         |       |
| <b>SUMMARY (Non Household Waste)</b>   |                           |                   | 2016/17          | 2017/18 |       |
| RECYCLED (Incl. REUSE)   |                           | 130.793           | 154.306          |         |       |
| COMPOSTED  |                           | 0.000             | 0.000            |         |       |
| <b>TOTAL (REC &amp; COMP) (WCA)</b>  | <b>130.793</b>            | <b>154.306</b>    |                  |         |       |
| ENERGY FROM WASTE (ERF)  |                           | 9.075             | 1,682.053        |         |       |
| OTHER (LANDFILL)   |                           | 3,377.409         | 1,550.060        |         |       |
| <b>TOTAL (NON-RECYCLED) (WCA)</b>  | <b>3,386.484</b>          | <b>3,232.113</b>  |                  |         |       |
| <b>TOTAL (Non Household Waste) (WCA)</b>   | <b>3,517.277</b>          | <b>3,386.419</b>  |                  |         |       |
| <b>SUMMARY (LACW)</b>  |                           |                   | 2016/17          | 2017/18 |       |
| LACW (REC & COMP)  |                           | 15,269.725        | 14,643.755       |         |       |
| LACW (NON RECYCLED)  |                           | 16,576.102        | 16,699.705       |         |       |
| <b>TOTAL LACW (WCA)</b>  | <b>31,845.827</b>         | <b>31,343.460</b> |                  |         |       |
| <b>PERFORMANCE INDICATORS</b>  |                           |                   | 2016/17          | 2017/18 |       |
| <b>NI192 (Recycling Rate %)</b>  |                           | <b>53.4%</b>      | <b>51.8%</b>     |         |       |
| BVPI 84a (kgs waste per head)  |                           | 354.2             | 345.4            |         |       |
| NI191 (kgs residual per household)   |                           | 374               | 379              |         |       |
| NI193 (% MSW (LACW) landfilled)*   |                           | 43.3%             | 30.7%            |         |       |
| <i>*Indicative. WDA/UA indicator only.</i>   |                           |                   |                  |         |       |
| Recycling Rate (H/H) (WCA + WDA)   |                           | 58.0%             | 54.8%            |         |       |
| Recycling Rate (HWRC) (WDA)  |                           | 78.6%             | 68.5%            |         |       |
| <i>NOTE: Recycling Centres includes non household</i>  |                           |                   |                  |         |       |
| <b>WASTE GROWTH</b>  |                           |                   | 2016/17          | 2017/18 |       |
| TOTAL HOUSEHOLD (WCA)  |                           | -5.6%             | -1.3%            |         |       |
| TOTAL HOUSEHOLD (WDA)  |                           | 17.0%             | 5.0%             |         |       |
| <b>TOTAL HOUSEHOLD (WCA+WDA)</b>   | <b>-2.1%</b>              | <b>-0.1%</b>      |                  |         |       |
| <b>POPULATION</b>  |                           |                   | 79,789           | 80,623  |       |
| <b>DWELLING STOCK</b>  |                           |                   | 35,250           | 35,570  |       |
| <i>LACW - Local Authority Collected Waste (Household + Non Household)</i>  |                           |                   |                  |         |       |
| <i>ERF: Input - Includes IBA (recovered) and Healthcare Wastes.</i>  |                           |                   |                  |         |       |

| NORTH DEVON  |                   | 2017/18   |  | Status:   | FINAL      |            |
|--|-------------------|-----------|--|---|------------|------------|
| <i>Data Source: Statistics Payments and Recharges (SPR). National Statistics available from WasteDataFlow: www.wastedataflow.org</i> |                   |           |  |   |            |            |
| <b>RECYCLED (Household Waste)</b>  |                   |           | <b>NON RECYCLED (Household Waste)</b>                              |   |            |            |
|  |                   | 2016/17   | 2017/18  | 2016/17   | 2017/18    |            |
| Glass  | Bring Bank        | 71.580    | 83.600   | Dustbin   | 21827.344  | 19935.206  |
|  | Kerbside          | 2429.014  | 2673.586   | MRF (Reject)  | 0.000      | 0.000      |
|  | Third Parties     | 0.000     | 0.000  | Bulky Collection                                      | 0.000      | 0.000      |
|  | Recycling Centres | 80.860    | 88.220   | Healthcare  | 83.551     | 68.607     |
|  | Sub total         | 2581.454  | 2845.406   | Street Cleansing                                      | 79.300     | 632.940    |
| Paper & Card   | Bring Bank        | 38.120    | 74.910   | IVC (Reject)  | 4.102      | 3.238      |
|  | Kerbside          | 3392.343  | 3388.008   | Other   | 0.000      | 0.000      |
|  | Third Parties     | 27.099    | 47.810   | TOTAL WCA   | 21994.297  | 20639.991  |
|  | Recycling Centres | 561.750   | 536.411  | Recycling Centres - Other                             | 2140.860   | 2567.490   |
|  | Sub total         | 4019.312  | 4047.139   | Recycling Centres - ERF                               | 0.000      | 708.374    |
| Textiles   | Bring Bank        | 0.000     | 0.000  | TOTAL WDA   | 2140.860   | 3275.864   |
|  | Kerbside          | 57.250    | 61.820   | TOTAL NON RECYCLED (WCA+WDA)                          | 24135.157  | 23915.855  |
|  | Third Parties     | 0.000     | 0.000  | <b>NON RECYCLED (Non Household Waste)</b>             |            |            |
|  | Recycling Centres | 134.770   | 127.990  |   | 2016/17    | 2017/18    |
|  | Sub total         | 192.020   | 189.810  | TRADE - Commercial & Industrial                       | 3623.826   | 3178.604   |
| Plastic  | Bring Bank        | 0.000     | 0.000  | TRADE - Construction & Demolition                     | 0.000      | 0.000      |
|  | Kerbside          | 649.620   | 644.158  | TOTAL WCA - TRADE                                     | 3623.826   | 3178.604   |
|  | Third Parties     | 0.000     | 0.000  | Fly Tipped  | 1.260      | 0.000      |
|  | Recycling Centres | 172.418   | 186.767  | Other (Non Household)                                 | 0.000      | 0.000      |
|  | Sub total         | 822.038   | 830.925  | TOTAL WCA - OTHER                                     | 1.260      | 0.000      |
| WEEE   | Bring Bank        | 0.000     | 0.000  | Recycling Centre (WDA)                                | 0.000      | 0.000      |
|  | Kerbside          | 54.479    | 71.290   | TOTAL NON RECYCLED (WCA+WDA)                          | 3625.086   | 3178.604   |
|  | Third Parties     | 0.000     | 0.000  | <b>SUMMARY (Household Waste)</b>                      |            |            |
|  | Recycling Centres | 986.187   | 969.187  |   | 2016/17    | 2017/18    |
|  | Sub total         | 1040.666  | 1040.477   | RECYCLED (Incl. Reuse)                                | 7,210.387  | 7,515.262  |
| Organic  | Food Waste        | 0.000     | 2421.410   | COMPOSTED   | 10,399.703 | 9,715.886  |
|  | Garden/Food Mx    | 9703.258  | 6955.412   | TOTAL (REC & COMP) (WCA)                              | 17,610.090 | 17,231.148 |
|  | Leaf Sweeping     | 497.060   | 125.600  | ENERGY RECOVERY (ERF)                                 | 83.551     | 68.607     |
|  | Third Parties     | 199.385   | 213.464  | OTHER (LANDFILL)                                      | 21,910.746 | 20,571.384 |
|  | Recycling Centres | 1417.410  | 1711.845   | TOTAL (NON-RECYCLED) (WCA)                            | 21,994.297 | 20,639.991 |
| Other  | Bring Bank        | 3.500     | 2.700  | TOTAL (Household Waste) (WCA)                         | 39,604.387 | 37,871.139 |
|  | Kerbside          | 377.122   | 382.720  | <b>SUMMARY (Non Household Waste)</b>                  |            |            |
|  | Third Parties     | 0.000     | 0.000  |   | 2016/17    | 2017/18    |
|  | Recycling Centres | 3610.081  | 2499.973   | RECYCLED (Incl. REUSE)                                | 335.683    | 239.170    |
|  | Sub total         | 3990.703  | 2885.393   | COMPOSTED   | 0.000      | 0.000      |
| Reuse  | Bring Bank        | 0.000     | 0.000  | TOTAL (REC & COMP) (WCA)                              | 335.683    | 239.170    |
|  | Kerbside          | 0.000     | 0.000  | ENERGY FROM WASTE (ERF)                               | 0.000      | 0.000      |
|  | Third Parties     | 110.260   | 84.660   | OTHER (LANDFILL)                                      | 3,625.086  | 3,178.604  |
|  | Recycling Centres | 81.270    | 71.913   | TOTAL (NON-RECYCLED) (WCA)                            | 3,625.086  | 3,178.604  |
|  | Sub total         | 191.530   | 156.573  | TOTAL (Non Household Waste) (WCA)                     | 3,960.769  | 3,417.774  |
| SUB TOTALS   | Bring Bank        | 113.200   | 161.210  | <b>SUMMARY (LACW)</b>                                 |            |            |
|  | Kerbside (Dry)    | 6959.828  | 7221.582   |   | 2016/17    | 2017/18    |
|  | Third Parties     | 336.744   | 345.934  | LACW (REC & COMP)                                     | 17,945.773 | 17,470.318 |
|  | Organic (WCA)     | 10200.318 | 9502.422   | LACW (NON RECYCLED)                                   | 25,619.383 | 23,818.595 |
|  | TOTAL WCA         | 17610.090 | 17231.148  | TOTAL LACW (WCA)                                      | 43,565.156 | 41,288.913 |
| TOTAL WDA (Recycling Centres)  | 7044.746          | 6192.306  | <b>PERFORMANCE INDICATORS</b>                                      |   |            |            |
| TOTAL RECYCLED (Household)   | 24654.836         | 23423.454 |  | 2016/17   | 2017/18    |            |
| <b>RECYCLED (Non Household Waste)</b>  |                   |           | <b>NI192 (Recycling Rate %)</b>                                    |   |            |            |
|  |                   | 2016/17   | 2017/18  |   |            |            |
| WCA  | TRADE             | 335.683   | 239.170  |   |            |            |
|  | Fly Tipped        | 0.000     | 0.000  | BVPI 84a (kgs waste per head)                         | 417.4      | 395.9      |
|  | Other             | 0.000     | 0.000  |   |            |            |
|  | TOTAL WCA         | 335.683   | 239.170  | NI191 (kgs residual per household)                    | 492        | 458        |
| WDA  | TRADE (Green)     | 12.450    | 24.275   | NI193 (% MSW (LACW) landfilled)*                      | 58.6%      | 57.5%      |
|  | TRADE (Card)      | 0.000     | 0.000  | <i>*Indicative. WDA/UA indicator only.</i>            |            |            |
|  | Soil & Rubble     | 334.156   | 363.680  | Recycling Rate (H/H) (WCA + WDA)                      | 50.5%      | 49.5%      |
|  | Plasterboard      | 77.220    | 91.040   | Recycling Rate (HWRC) (WDA)                           | 77.7%      | 67.1%      |
|  | Other             | 0.083     | 0.000  | <i>NOTE: Recycling Centres includes non household</i> |            |            |
| TOTAL WDA  | 423.909           | 478.995   | <b>WASTE GROWTH</b>  |   |            |            |
| TOTAL RECYCLED (Non Household)   | 759.592           | 718.165   |  | 2016/17   | 2017/18    |            |
|  |                   |           | TOTAL HOUSEHOLD (WCA)  |   |            |            |
|  |                   |           | TOTAL HOUSEHOLD (WDA)  |   |            |            |
|  |                   |           | TOTAL HOUSEHOLD (WCA+WDA)  |   |            |            |
|  |                   |           | POPULATION   |   |            |            |
|  |                   |           | DWELLING STOCK   |   |            |            |
|  |                   |           | LACW - Local Authority Collected Waste (Household + Non Household) |   |            |            |
|  |                   |           | ERF: Input - Includes IBA (recovered) and Healthcare Wastes.       |   |            |            |

| SOUTH HAMS   |                           | 2017/18           |                  | Status: | FINAL |
|--|---------------------------|-------------------|------------------|---------|-------|
| <i>Data Source: Statistics Payments and Recharges (SPR). National Statistics available from WasteDataFlow: www.wastedataflow.org</i> |                           |                   |                  |         |       |
| <b>RECYCLED (Household Waste)</b>  |                           |                   | 2016/17          | 2017/18 |       |
| Glass  | Bring Bank                | 2396.720          | 2173.680         |         |       |
|  | Kerbside                  | 0.000             | 0.000            |         |       |
|  | Third Parties             | 0.000             | 0.000            |         |       |
|  | Recycling Centres         | 230.310           | 306.400          |         |       |
|  | <b>Sub total</b>          | <b>2627.030</b>   | <b>2480.080</b>  |         |       |
| Paper & Card   | Bring Bank                | 128.420           | 74.220           |         |       |
|  | Kerbside                  | 4223.540          | 4184.550         |         |       |
|  | Third Parties             | 6.823             | 0.000            |         |       |
|  | Recycling Centres         | 474.170           | 514.840          |         |       |
|  | <b>Sub total</b>          | <b>4832.953</b>   | <b>4773.610</b>  |         |       |
| Textiles   | Bring Bank                | 96.255            | 112.762          |         |       |
|  | Kerbside                  | 0.000             | 0.000            |         |       |
|  | Third Parties             | 12.704            | 9.176            |         |       |
|  | Recycling Centres         | 83.296            | 103.975          |         |       |
|  | <b>Sub total</b>          | <b>192.255</b>    | <b>225.913</b>   |         |       |
| Plastic  | Bring Bank                | 0.000             | 0.000            |         |       |
|  | Kerbside                  | 491.317           | 521.809          |         |       |
|  | Third Parties             | 0.000             | 0.000            |         |       |
|  | Recycling Centres         | 76.975            | 146.872          |         |       |
|  | <b>Sub total</b>          | <b>568.292</b>    | <b>668.681</b>   |         |       |
| WEEE   | Bring Bank                | 0.000             | 0.000            |         |       |
|  | Kerbside                  | 8.055             | 10.980           |         |       |
|  | Third Parties             | 0.000             | 0.000            |         |       |
|  | Recycling Centres         | 865.611           | 881.210          |         |       |
|  | <b>Sub total</b>          | <b>873.666</b>    | <b>892.190</b>   |         |       |
| Organic  | Food Waste                | 0.000             | 0.000            |         |       |
|  | Garden/Food Mx            | 10293.269         | 9935.200         |         |       |
|  | Leaf Sweeping             | 420.690           | 320.540          |         |       |
|  | Third Parties             | 274.096           | 283.530          |         |       |
|  | <b>Recycling Centres</b>  | <b>1748.785</b>   | <b>1912.185</b>  |         |       |
| <b>Sub total</b>   | <b>12736.840</b>          | <b>12451.455</b>  |                  |         |       |
| Other  | Bring Bank                | 17.757            | 45.847           |         |       |
|  | Kerbside                  | 355.780           | 377.862          |         |       |
|  | Third Parties             | 0.000             | 19.707           |         |       |
|  | Recycling Centres         | 3002.542          | 2308.572         |         |       |
|  | <b>Sub total</b>          | <b>3376.079</b>   | <b>2751.988</b>  |         |       |
| Reuse  | Bring Bank                | 0.000             | 0.000            |         |       |
|  | Kerbside                  | 0.000             | 0.000            |         |       |
|  | Third Parties             | 173.916           | 176.164          |         |       |
|  | Recycling Centres         | 43.843            | 80.938           |         |       |
|  | <b>Sub total</b>          | <b>217.759</b>    | <b>257.102</b>   |         |       |
| SUB TOTALS   | Bring Bank                | 2639.152          | 2406.509         |         |       |
|  | Kerbside (Dry)            | 5078.692          | 5095.201         |         |       |
|  | Third Parties             | 467.539           | 488.577          |         |       |
|  | Organic (WCA)             | 10713.959         | 10255.740        |         |       |
|  | <b>TOTAL WCA</b>          | <b>18899.342</b>  | <b>18246.027</b> |         |       |
| <b>TOTAL WDA (Recycling Centres)</b>   | <b>6525.532</b>           | <b>6254.992</b>   |                  |         |       |
| <b>TOTAL RECYCLED (Household)</b>  | <b>25424.874</b>          | <b>24501.019</b>  |                  |         |       |
| <b>RECYCLED (Non Household Waste)</b>  |                           |                   | 2016/17          | 2017/18 |       |
| WCA  | TRADE                     | 541.580           | 440.820          |         |       |
|  | Fly Tipped                | 1.344             | 0.462            |         |       |
|  | Other                     | 0.000             | 0.000            |         |       |
|  | <b>TOTAL WCA</b>          | <b>542.924</b>    | <b>441.282</b>   |         |       |
| WDA  | TRADE (Green)             | 0.225             | 0.225            |         |       |
|  | TRADE (Card)              | 5.500             | 2.500            |         |       |
|  | Soil & Rubble             | 208.780           | 275.760          |         |       |
|  | Plasterboard              | 18.780            | 43.740           |         |       |
|  | Other                     | 0.113             | 0.000            |         |       |
| <b>TOTAL WDA</b>   | <b>233.398</b>            | <b>322.225</b>    |                  |         |       |
| <b>TOTAL RECYCLED (Non Household)</b>  | <b>776.322</b>            | <b>763.507</b>    |                  |         |       |
| <b>NON RECYCLED (Household Waste)</b>  |                           |                   | 2016/17          | 2017/18 |       |
| Dustbin  |                           | 15511.233         | 15465.613        |         |       |
|  | MRF (Reject)              | 72.461            | 77.927           |         |       |
|  | Bulky Collection          | 0.000             | 0.000            |         |       |
|  | Healthcare                | 63.424            | 69.785           |         |       |
|  | Street Cleansing          | 0.000             | 0.000            |         |       |
|  | IVC (Reject)              | 29.931            | 0.000            |         |       |
|  | Other                     | 0.000             | 0.000            |         |       |
|  | <b>TOTAL WCA</b>          | <b>15677.049</b>  | <b>15613.325</b> |         |       |
|  | Recycling Centres - Other | 6.491             | 13.516           |         |       |
|  | Recycling Centres - ERF   | 2026.960          | 2862.687         |         |       |
| <b>TOTAL WDA</b>   | <b>2033.451</b>           | <b>2876.203</b>   |                  |         |       |
| <b>TOTAL NON RECYCLED (WCA+WDA)</b>  | <b>17710.500</b>          | <b>18489.528</b>  |                  |         |       |
| <b>NON RECYCLED (Non Household Waste)</b>  |                           |                   | 2016/17          | 2017/18 |       |
| TRADE - Commercial & Industrial  |                           | 2867.447          | 2485.867         |         |       |
| TRADE - Construction & Demolition  |                           | 0.000             | 0.000            |         |       |
| <b>TOTAL WCA - TRADE</b>   | <b>2867.447</b>           | <b>2485.867</b>   |                  |         |       |
| Fly Tipped   |                           | 0.000             | 43.100           |         |       |
| Other (Non Household)  |                           | 0.000             | 0.000            |         |       |
| <b>TOTAL WCA - OTHER</b>   | <b>0.000</b>              | <b>43.100</b>     |                  |         |       |
| Recycling Centre (WDA)   |                           | 0.000             | 0.000            |         |       |
| <b>TOTAL NON RECYCLED (WCA+WDA)</b>  | <b>2867.447</b>           | <b>2528.967</b>   |                  |         |       |
| <b>SUMMARY (Household Waste)</b>   |                           |                   | 2016/17          | 2017/18 |       |
| RECYCLED (Incl. Reuse)   |                           | 7,911.287         | 7,706.757        |         |       |
| COMPOSTED  |                           | 10,988.055        | 10,539.270       |         |       |
| <b>TOTAL (REC &amp; COMP) (WCA)</b>  | <b>18,899.342</b>         | <b>18,246.027</b> |                  |         |       |
| ENERGY RECOVERY (ERF)  |                           | 15,574.657        | 15,535.398       |         |       |
| OTHER (LANDFILL)   |                           | 102.392           | 77.927           |         |       |
| <b>TOTAL (NON-RECYCLED) (WCA)</b>  | <b>15,677.049</b>         | <b>15,613.325</b> |                  |         |       |
| <b>TOTAL (Household Waste) (WCA)</b>   | <b>34,576.391</b>         | <b>33,859.352</b> |                  |         |       |
| <b>SUMMARY (Non Household Waste)</b>   |                           |                   | 2016/17          | 2017/18 |       |
| RECYCLED (Incl. REUSE)   |                           | 137.524           | 441.282          |         |       |
| COMPOSTED  |                           | 405.400           | 0.000            |         |       |
| <b>TOTAL (REC &amp; COMP) (WCA)</b>  | <b>542.924</b>            | <b>441.282</b>    |                  |         |       |
| ENERGY FROM WASTE (ERF)  |                           | 2,867.447         | 2,485.867        |         |       |
| OTHER (LANDFILL)   |                           | 0.000             | 43.100           |         |       |
| <b>TOTAL (NON-RECYCLED) (WCA)</b>  | <b>2,867.447</b>          | <b>2,528.967</b>  |                  |         |       |
| <b>TOTAL (Non Household Waste) (WCA)</b>   | <b>3,410.371</b>          | <b>2,970.249</b>  |                  |         |       |
| <b>SUMMARY (LACW)</b>  |                           |                   | 2016/17          | 2017/18 |       |
| LACW (REC & COMP)  |                           | 19,442.266        | 18,687.309       |         |       |
| LACW (NON RECYCLED)  |                           | 18,544.496        | 18,142.292       |         |       |
| <b>TOTAL LACW (WCA)</b>  | <b>37,986.762</b>         | <b>36,829.601</b> |                  |         |       |
| <b>PERFORMANCE INDICATORS</b>  |                           |                   | 2016/17          | 2017/18 |       |
| <b>NI192 (Recycling Rate %)</b>  |                           | <b>54.7%</b>      | <b>53.9%</b>     |         |       |
| BVPI 84a (kgs waste per head)  |                           | 408.1             | 394.7            |         |       |
| NI191 (kgs residual per household)   |                           | 361               | 357              |         |       |
| NI193 (% MSW (LACW) landfilled)*   |                           | 0.3%              | 0.3%             |         |       |
| <i>*Indicative. WDA/UA indicator only.</i>   |                           |                   |                  |         |       |
| Recycling Rate (H/H) (WCA + WDA)   |                           | 58.9%             | 57.0%            |         |       |
| Recycling Rate (HWRC) (WDA)  |                           | 76.9%             | 69.6%            |         |       |
| <i>NOTE: Recycling Centres includes non household</i>  |                           |                   |                  |         |       |
| <b>WASTE GROWTH</b>  |                           |                   | 2016/17          | 2017/18 |       |
| TOTAL HOUSEHOLD (WCA)  |                           | -0.1%             | -2.1%            |         |       |
| TOTAL HOUSEHOLD (WDA)  |                           | 0.6%              | 6.7%             |         |       |
| <b>TOTAL HOUSEHOLD (WCA+WDA)</b>   | <b>0.1%</b>               | <b>-0.3%</b>      |                  |         |       |
| <b>POPULATION</b>  |                           |                   | 84,306           | 85,340  |       |
| <b>DWELLING STOCK</b>  |                           |                   | 43,480           | 43,770  |       |
| <i>LACW - Local Authority Collected Waste (Household + Non Household)</i>  |                           |                   |                  |         |       |
| <i>ERF: Input - Includes IBA (recovered) and Healthcare Wastes.</i>  |                           |                   |                  |         |       |

| TEIGNBRIDGE  |                           | 2017/18   |            | Status:    | FINAL |
|--|---------------------------|-----------|------------|------------|-------|
| <i>Data Source: Statistics Payments and Recharges (SPR). National Statistics available from WasteDataFlow: www.wastedataflow.org</i> |                           |           |            |            |       |
| <b>RECYCLED (Household Waste)</b>  |                           |           | 2016/17    | 2017/18    |       |
| Glass  | Bring Bank                | 569.710   | 564.756    |            |       |
|  | Kerbside                  | 3546.866  | 3686.620   |            |       |
|  | Third Parties             | 0.000     | 0.000      |            |       |
|  | Recycling Centres         | 24.340    | 17.160     |            |       |
|  | Sub total                 | 4140.916  | 4268.536   |            |       |
| Paper & Card   | Bring Bank                | 1015.961  | 962.575    |            |       |
|  | Kerbside                  | 4777.119  | 4483.799   |            |       |
|  | Third Parties             | 40.360    | 43.080     |            |       |
|  | Recycling Centres         | 517.140   | 478.420    |            |       |
|  | Sub total                 | 6350.580  | 5967.874   |            |       |
| Textiles   | Bring Bank                | 246.761   | 270.069    |            |       |
|  | Kerbside                  | 99.276    | 81.505     |            |       |
|  | Third Parties             | 0.000     | 0.000      |            |       |
|  | Recycling Centres         | 86.525    | 89.900     |            |       |
|  | Sub total                 | 432.562   | 441.474    |            |       |
| Plastic  | Bring Bank                | 103.021   | 102.229    |            |       |
|  | Kerbside                  | 1259.152  | 1445.217   |            |       |
|  | Third Parties             | 0.000     | 0.000      |            |       |
|  | Recycling Centres         | 78.608    | 69.112     |            |       |
|  | Sub total                 | 1440.781  | 1616.558   |            |       |
| WEEE   | Bring Bank                | 0.018     | 0.105      |            |       |
|  | Kerbside                  | 34.339    | 36.145     |            |       |
|  | Third Parties             | 0.000     | 0.000      |            |       |
|  | Recycling Centres         | 938.970   | 920.164    |            |       |
|  | Sub total                 | 973.327   | 956.414    |            |       |
| Organic  | Food Waste                | 4698.479  | 5379.372   |            |       |
|  | Garden/Food Mx            | 7235.361  | 6980.630   |            |       |
|  | Leaf Sweeping             | 2501.820  | 1824.120   |            |       |
|  | Third Parties             | 36.980    | 34.030     |            |       |
|  | Recycling Centres         | 3464.065  | 3600.350   |            |       |
| Sub total  | 17936.705                 | 17818.502 |            |            |       |
| Other  | Bring Bank                | 14.206    | 17.222     |            |       |
|  | Kerbside                  | 788.615   | 663.491    |            |       |
|  | Third Parties             | 0.900     | 0.000      |            |       |
|  | Recycling Centres         | 4045.127  | 2733.025   |            |       |
|  | Sub total                 | 4848.848  | 3413.738   |            |       |
| Reuse  | Bring Bank                | 0.000     | 0.000      |            |       |
|  | Kerbside                  | 0.000     | 0.000      |            |       |
|  | Third Parties             | 92.626    | 83.731     |            |       |
|  | Recycling Centres         | 160.974   | 200.404    |            |       |
|  | Sub total                 | 253.600   | 284.135    |            |       |
| SUB TOTALS   | Bring Bank                | 1949.677  | 1916.956   |            |       |
|  | Kerbside (Dry)            | 10505.367 | 10396.777  |            |       |
|  | Third Parties             | 170.866   | 160.841    |            |       |
|  | Organic (WCA)             | 14435.660 | 14184.122  |            |       |
|  | TOTAL WCA                 | 27061.570 | 26658.696  |            |       |
| TOTAL WDA (Recycling Centres)  | 9315.749                  | 8108.535  |            |            |       |
| TOTAL RECYCLED (Household)   | 36377.319                 | 34767.231 |            |            |       |
| <b>RECYCLED (Non Household Waste)</b>  |                           |           | 2016/17    | 2017/18    |       |
| WCA  | TRADE                     | 15.159    | 15.897     |            |       |
|  | Fly Tipped                | 11.922    | 60.350     |            |       |
|  | Other                     | 4.160     | 0.000      |            |       |
|  | TOTAL WCA                 | 31.241    | 76.247     |            |       |
| WDA  | TRADE (Green)             | 12.775    | 15.450     |            |       |
|  | TRADE (Card)              | 0.000     | 0.000      |            |       |
|  | Soil & Rubble             | 366.880   | 332.880    |            |       |
|  | Plasterboard              | 53.200    | 61.700     |            |       |
|  | Other                     | 0.000     | 0.000      |            |       |
| TOTAL WDA  | 432.855                   | 410.030   |            |            |       |
| TOTAL RECYCLED (Non Household)   | 464.096                   | 486.277   |            |            |       |
| <b>NON RECYCLED (Household Waste)</b>  |                           |           | 2016/17    | 2017/18    |       |
| Dustbin  |                           | 19852.400 | 19818.249  |            |       |
|  | MRF (Reject)              | 0.000     | 0.000      |            |       |
|  | Bulky Collection          | 0.000     | 0.000      |            |       |
|  | Healthcare                | 79.323    | 7.958      |            |       |
|  | Street Cleansing          | 1608.390  | 1664.700   |            |       |
|  | IVC (Reject)              | 15.449    | 0.000      |            |       |
|  | Other                     | 0.000     | 0.000      |            |       |
|  | TOTAL WCA                 | 21555.562 | 21490.907  |            |       |
|  | Recycling Centres - Other | 20.747    | 21.070     |            |       |
|  | Recycling Centres - ERF   | 2260.830  | 3463.372   |            |       |
|  | TOTAL WDA                 | 2281.577  | 3484.442   |            |       |
| TOTAL NON RECYCLED (WCA+WDA)   | 23837.139                 | 24975.349 |            |            |       |
| <b>NON RECYCLED (Non Household Waste)</b>  |                           |           | 2016/17    | 2017/18    |       |
| TRADE - Commercial & Industrial  |                           |           | 345.880    | 317.461    |       |
| TRADE - Construction & Demolition  |                           |           | 0.000      | 0.000      |       |
| TOTAL WCA - TRADE  |                           |           | 345.880    | 317.461    |       |
| Fly Tipped   |                           |           | 502.980    | 423.620    |       |
| Other (Non Household)  |                           |           | 210.020    | 210.020    |       |
| TOTAL WCA - OTHER  |                           |           | 713.000    | 633.640    |       |
| Recycling Centre (WDA)   |                           |           | 0.000      | 0.000      |       |
| TOTAL NON RECYCLED (WCA+WDA)   |                           |           | 1058.880   | 951.101    |       |
| <b>SUMMARY (Household Waste)</b>   |                           |           | 2016/17    | 2017/18    |       |
| RECYCLED (Incl. Reuse)   |                           |           | 12,588.930 | 12,440.544 |       |
| COMPOSTED  |                           |           | 14,472.640 | 14,218.152 |       |
| TOTAL (REC & COMP) (WCA)   |                           |           | 27,061.570 | 26,658.696 |       |
| ENERGY RECOVERY (ERF)  |                           |           | 21,378.753 | 21,490.907 |       |
| OTHER (LANDFILL)   |                           |           | 176.809    | 0.000      |       |
| TOTAL (NON-RECYCLED) (WCA)   |                           |           | 21,555.562 | 21,490.907 |       |
| TOTAL (Household Waste) (WCA)  |                           |           | 48,617.132 | 48,149.603 |       |
| <b>SUMMARY (Non Household Waste)</b>   |                           |           | 2016/17    | 2017/18    |       |
| RECYCLED (Incl. REUSE)   |                           |           | 20.975     | 76.247     |       |
| COMPOSTED  |                           |           | 10.266     | 0.000      |       |
| TOTAL (REC & COMP) (WCA)   |                           |           | 31.241     | 76.247     |       |
| ENERGY FROM WASTE (ERF)  |                           |           | 653.460    | 628.620    |       |
| OTHER (LANDFILL)   |                           |           | 405.420    | 322.481    |       |
| TOTAL (NON-RECYCLED) (WCA)   |                           |           | 1,058.880  | 951.101    |       |
| TOTAL (Non Household Waste) (WCA)  |                           |           | 1,090.121  | 1,027.348  |       |
| <b>SUMMARY (LACW)</b>  |                           |           | 2016/17    | 2017/18    |       |
| LACW (REC & COMP)  |                           |           | 27,092.811 | 26,734.943 |       |
| LACW (NON RECYCLED)  |                           |           | 22,614.442 | 22,442.008 |       |
| TOTAL LACW (WCA)   |                           |           | 49,707.253 | 49,176.951 |       |
| <b>PERFORMANCE INDICATORS</b>  |                           |           | 2016/17    | 2017/18    |       |
| <b>NI192 (Recycling Rate %)</b>  |                           |           | 55.7%      | 55.4%      |       |
| BVPI 84a (kgs waste per head)  |                           |           | 373.7      | 365.7      |       |
| NI191 (kgs residual per household)   |                           |           | 355        | 350        |       |
| NI193 (% MSW (LACW) landfilled)*   |                           |           | 1.2%       | 0.7%       |       |
| <i>*Indicative. WDA/UA indicator only.</i>   |                           |           |            |            |       |
| Recycling Rate (H/H) (WCA + WDA)   |                           |           | 60.4%      | 58.2%      |       |
| Recycling Rate (HWRC) (WDA)  |                           |           | 81.0%      | 71.0%      |       |
| <i>NOTE: Recycling Centres includes non household</i>  |                           |           |            |            |       |
| <b>WASTE GROWTH</b>  |                           |           | 2016/17    | 2017/18    |       |
| TOTAL HOUSEHOLD (WCA)  |                           |           | 0.3%       | -1.0%      |       |
| TOTAL HOUSEHOLD (WDA)  |                           |           | 8.0%       | 0.0%       |       |
| TOTAL HOUSEHOLD (WCA+WDA)  |                           |           | 1.7%       | -0.8%      |       |
| <b>POPULATION</b>  |                           |           | 129,856    | 131,437    |       |
| <b>DWELLING STOCK</b>  |                           |           | 60,680     | 61,330     |       |
| <i>LACW - Local Authority Collected Waste (Household + Non Household)</i>  |                           |           |            |            |       |
| <i>ERF: Input - Includes IBA (recovered) and Healthcare Wastes.</i>  |                           |           |            |            |       |



| TORRIDGE   |                           | 2017/18          |                   | Status:           | FINAL |
|--|---------------------------|------------------|-------------------|-------------------|-------|
| <i>Data Source: Statistics Payments and Recharges (SPR). National Statistics available from WasteDataFlow: www.wastedataflow.org</i> |                           |                  |                   |                   |       |
| <b>RECYCLED (Household Waste)</b>  |                           |                  | 2016/17           | 2017/18           |       |
| Glass  | Bring Bank                | 106.360          | 96.360            |                   |       |
|  | Kerbside                  | 1752.255         | 1637.610          |                   |       |
|  | Third Parties             | 0.000            | 0.000             |                   |       |
|  | Recycling Centres         | 72.380           | 71.740            |                   |       |
|  | <b>Sub total</b>          | <b>1930.995</b>  | <b>1805.710</b>   |                   |       |
| Paper & Card   | Bring Bank                | 68.715           | 36.830            |                   |       |
|  | Kerbside                  | 2322.780         | 2340.640          |                   |       |
|  | Third Parties             | 11.442           | 8.123             |                   |       |
|  | Recycling Centres         | 402.280          | 400.238           |                   |       |
|  | <b>Sub total</b>          | <b>2805.217</b>  | <b>2785.831</b>   |                   |       |
| Textiles   | Bring Bank                | 2.160            | 0.000             |                   |       |
|  | Kerbside                  | 17.540           | 14.423            |                   |       |
|  | Third Parties             | 17.537           | 1.914             |                   |       |
|  | Recycling Centres         | 55.967           | 58.995            |                   |       |
|  | <b>Sub total</b>          | <b>93.204</b>    | <b>75.332</b>     |                   |       |
| Plastic  | Bring Bank                | 0.000            | 0.000             |                   |       |
|  | Kerbside                  | 290.710          | 285.910           |                   |       |
|  | Third Parties             | 0.000            | 0.000             |                   |       |
|  | Recycling Centres         | 144.443          | 137.018           |                   |       |
|  | <b>Sub total</b>          | <b>435.153</b>   | <b>422.928</b>    |                   |       |
| WEEE   | Bring Bank                | 0.000            | 0.000             |                   |       |
|  | Kerbside                  | 11.564           | 11.725            |                   |       |
|  | Third Parties             | 0.000            | 0.000             |                   |       |
|  | Recycling Centres         | 658.092          | 649.149           |                   |       |
|  | <b>Sub total</b>          | <b>669.656</b>   | <b>660.874</b>    |                   |       |
| Organic  | Food Waste                | 0.000            | 0.000             |                   |       |
|  | Garden/Food Mx            | 6631.364         | 6389.829          |                   |       |
|  | Leaf Sweeping             | 207.760          | 110.660           |                   |       |
|  | Third Parties             | 0.000            | 0.000             |                   |       |
|  | Recycling Centres         | 1141.985         | 1098.280          |                   |       |
| <b>Sub total</b>   | <b>7981.109</b>           | <b>7598.769</b>  |                   |                   |       |
| Other  | Bring Bank                | 5.402            | 6.255             |                   |       |
|  | Kerbside                  | 174.825          | 172.730           |                   |       |
|  | Third Parties             | 1.440            | 0.000             |                   |       |
|  | Recycling Centres         | 2269.408         | 1702.492          |                   |       |
|  | <b>Sub total</b>          | <b>2451.075</b>  | <b>1881.477</b>   |                   |       |
| Reuse  | Bring Bank                | 0.000            | 0.000             |                   |       |
|  | Kerbside                  | 0.000            | 0.000             |                   |       |
|  | Third Parties             | 35.222           | 38.668            |                   |       |
|  | Recycling Centres         | 106.166          | 98.552            |                   |       |
|  | <b>Sub total</b>          | <b>141.388</b>   | <b>137.220</b>    |                   |       |
| SUB TOTALS   | Bring Bank                | 182.637          | 139.445           |                   |       |
|  | Kerbside (Dry)            | 4569.674         | 4463.038          |                   |       |
|  | Third Parties             | 65.641           | 48.705            |                   |       |
|  | Organic (WCA)             | 6839.124         | 6500.489          |                   |       |
|  | <b>TOTAL WCA</b>          | <b>11657.076</b> | <b>11151.677</b>  |                   |       |
| <b>TOTAL WDA (Recycling Centres)</b>   | <b>4850.721</b>           | <b>4216.464</b>  |                   |                   |       |
| <b>TOTAL RECYCLED (Household)</b>  | <b>16507.797</b>          | <b>15368.141</b> |                   |                   |       |
| <b>RECYCLED (Non Household Waste)</b>  |                           |                  | 2016/17           | 2017/18           |       |
| WCA  | TRADE                     | 0.000            | 0.000             |                   |       |
|  | Fly Tipped                | 0.000            | 0.000             |                   |       |
|  | Other                     | 0.000            | 0.000             |                   |       |
|  | <b>TOTAL WCA</b>          | <b>0.000</b>     | <b>0.000</b>      |                   |       |
| WDA  | TRADE (Green)             | 6.475            | 1.400             |                   |       |
|  | TRADE (Card)              | 0.000            | 0.000             |                   |       |
|  | Soil & Rubble             | 212.467          | 208.581           |                   |       |
|  | Plasterboard              | 39.780           | 49.900            |                   |       |
|  | Other                     | 0.053            | 0.000             |                   |       |
| <b>TOTAL WDA</b>   | <b>258.775</b>            | <b>259.881</b>   |                   |                   |       |
| <b>TOTAL RECYCLED (Non Household)</b>  | <b>258.775</b>            | <b>259.881</b>   |                   |                   |       |
| <b>NON RECYCLED (Household Waste)</b>  |                           |                  | 2016/17           | 2017/18           |       |
| Dustbin  |                           | 15342.072        | 15106.828         |                   |       |
|  | MRF (Reject)              | 198.230          | 345.260           |                   |       |
|  | Bulky Collection          | 0.000            | 0.000             |                   |       |
|  | Healthcare                | 25.072           | 22.318            |                   |       |
|  | Street Cleansing          | 430.140          | 420.220           |                   |       |
|  | IVC (Reject)              | 2.918            | 1.711             |                   |       |
|  | Other                     | 0.000            | 0.000             |                   |       |
|  | <b>TOTAL WCA</b>          | <b>15998.432</b> | <b>15896.337</b>  |                   |       |
|  | Recycling Centres - Other | 36.545           | 1331.255          |                   |       |
|  | Recycling Centres - ERF   | 996.040          | 364.888           |                   |       |
| <b>TOTAL WDA</b>   | <b>1032.585</b>           | <b>1696.143</b>  |                   |                   |       |
| <b>TOTAL NON RECYCLED (WCA+WDA)</b>  | <b>17031.017</b>          | <b>17592.480</b> |                   |                   |       |
| <b>NON RECYCLED (Non Household Waste)</b>  |                           |                  | 2016/17           | 2017/18           |       |
| TRADE - Commercial & Industrial  |                           |                  | 15.008            | 6.592             |       |
| TRADE - Construction & Demolition  |                           |                  | 0.000             | 0.000             |       |
| <b>TOTAL WCA - TRADE</b>   |                           |                  | <b>15.008</b>     | <b>6.592</b>      |       |
| Fly Tipped   |                           |                  | 1.660             | 1.780             |       |
| Other (Non Household)  |                           |                  | 0.000             | 0.000             |       |
| <b>TOTAL WCA - OTHER</b>   |                           |                  | <b>1.660</b>      | <b>1.780</b>      |       |
| Recycling Centre (WDA)   |                           |                  | 0.000             | 0.000             |       |
| <b>TOTAL NON RECYCLED (WCA+WDA)</b>  |                           |                  | <b>16.668</b>     | <b>8.372</b>      |       |
| <b>SUMMARY (Household Waste)</b>   |                           |                  | 2016/17           | 2017/18           |       |
| RECYCLED (Incl. Reuse)   |                           |                  | 4,817.952         | 4,651.188         |       |
| COMPOSTED  |                           |                  | 6,839.124         | 6,500.489         |       |
| <b>TOTAL (REC &amp; COMP) (WCA)</b>  |                           |                  | <b>11,657.076</b> | <b>11,151.677</b> |       |
| ENERGY RECOVERY (ERF)  |                           |                  | 25.072            | 22.318            |       |
| OTHER (LANDFILL)   |                           |                  | 15,973.360        | 15,874.019        |       |
| <b>TOTAL (NON-RECYCLED) (WCA)</b>  |                           |                  | <b>15,998.432</b> | <b>15,896.337</b> |       |
| <b>TOTAL (Household Waste) (WCA)</b>   |                           |                  | <b>27,655.508</b> | <b>27,048.014</b> |       |
| <b>SUMMARY (Non Household Waste)</b>   |                           |                  | 2016/17           | 2017/18           |       |
| RECYCLED (Incl. REUSE)   |                           |                  | 0.000             | 0.000             |       |
| COMPOSTED  |                           |                  | 0.000             | 0.000             |       |
| <b>TOTAL (REC &amp; COMP) (WCA)</b>  |                           |                  | <b>0.000</b>      | <b>0.000</b>      |       |
| ENERGY FROM WASTE (ERF)  |                           |                  | 0.000             | 1.280             |       |
| OTHER (LANDFILL)   |                           |                  | 16.668            | 7.092             |       |
| <b>TOTAL (NON-RECYCLED) (WCA)</b>  |                           |                  | <b>16.668</b>     | <b>8.372</b>      |       |
| <b>TOTAL (Non Household Waste) (WCA)</b>   |                           |                  | <b>16.668</b>     | <b>8.372</b>      |       |
| <b>SUMMARY (LACW)</b>  |                           |                  | 2016/17           | 2017/18           |       |
| LACW (REC & COMP)  |                           |                  | 11,657.076        | 11,151.677        |       |
| LACW (NON RECYCLED)  |                           |                  | 16,015.100        | 15,904.709        |       |
| <b>TOTAL LACW (WCA)</b>  |                           |                  | <b>27,672.176</b> | <b>27,056.386</b> |       |
| <b>PERFORMANCE INDICATORS</b>  |                           |                  | 2016/17           | 2017/18           |       |
| <b>NI192 (Recycling Rate %)</b>  |                           |                  | <b>42.2%</b>      | <b>41.2%</b>      |       |
| BVPI 84a (kgs waste per head)  |                           |                  | 412.4             | 398.2             |       |
| NI191 (kgs residual per household)   |                           |                  | 503               | 494               |       |
| NI193 (% MSW (LACW) landfilled)*   |                           |                  | 57.8%             | 58.7%             |       |
| <i>*Indicative. WDA/UA indicator only.</i>   |                           |                  |                   |                   |       |
| Recycling Rate (H/H) (WCA + WDA)   |                           |                  | 49.2%             | 46.6%             |       |
| Recycling Rate (HWRC) (WDA)  |                           |                  | 83.2%             | 72.5%             |       |
| <i>NOTE: Recycling Centres includes non household</i>  |                           |                  |                   |                   |       |
| <b>WASTE GROWTH</b>  |                           |                  | 2016/17           | 2017/18           |       |
| TOTAL HOUSEHOLD (WCA)  |                           |                  | 1.6%              | -2.2%             |       |
| TOTAL HOUSEHOLD (WDA)  |                           |                  | 5.7%              | 0.5%              |       |
| TOTAL HOUSEHOLD (WCA+WDA)  |                           |                  | 2.3%              | -1.7%             |       |
| <b>POPULATION</b>  |                           |                  | 66,977            | 67,821            |       |
| <b>DWELLING STOCK</b>  |                           |                  | 31,830            | 32,210            |       |
| <i>LACW - Local Authority Collected Waste (Household + Non Household)</i>  |                           |                  |                   |                   |       |
| <i>ERF: Input - Includes IBA (recovered) and Healthcare Wastes.</i>  |                           |                  |                   |                   |       |

| WEST DEVON   |                           | 2017/18           |                 | Status: | FINAL |
|--|---------------------------|-------------------|-----------------|---------|-------|
| <i>Data Source: Statistics Payments and Recharges (SPR). National Statistics available from WasteDataFlow: www.wastedataflow.org</i> |                           |                   |                 |         |       |
| <b>RECYCLED (Household Waste)</b>  |                           |                   | 2016/17         | 2017/18 |       |
| Glass  | Bring Bank                | 218.190           | 214.780         |         |       |
|  | Kerbside                  | 1653.770          | 1551.300        |         |       |
|  | Third Parties             | 0.000             | 0.000           |         |       |
|  | Recycling Centres         | 41.240            | 43.820          |         |       |
|  | <b>Sub total</b>          | <b>1913.200</b>   | <b>1809.900</b> |         |       |
| Paper & Card   | Bring Bank                | 122.700           | 99.260          |         |       |
|  | Kerbside                  | 1959.312          | 1799.600        |         |       |
|  | Third Parties             | 6.354             | 7.966           |         |       |
|  | Recycling Centres         | 401.680           | 415.260         |         |       |
|  | <b>Sub total</b>          | <b>2490.046</b>   | <b>2322.086</b> |         |       |
| Textiles   | Bring Bank                | 39.031            | 38.375          |         |       |
|  | Kerbside                  | 1.660             | 1.660           |         |       |
|  | Third Parties             | 1.621             | 1.409           |         |       |
|  | Recycling Centres         | 65.241            | 61.680          |         |       |
|  | <b>Sub total</b>          | <b>107.553</b>    | <b>103.124</b>  |         |       |
| Plastic  | Bring Bank                | 24.280            | 19.840          |         |       |
|  | Kerbside                  | 262.080           | 238.320         |         |       |
|  | Third Parties             | 0.643             | 1.531           |         |       |
|  | Recycling Centres         | 159.693           | 162.461         |         |       |
|  | <b>Sub total</b>          | <b>446.696</b>    | <b>422.152</b>  |         |       |
| WEEE   | Bring Bank                | 0.000             | 0.000           |         |       |
|  | Kerbside                  | 8.690             | 8.730           |         |       |
|  | Third Parties             | 0.000             | 0.000           |         |       |
|  | Recycling Centres         | 680.602           | 648.994         |         |       |
|  | <b>Sub total</b>          | <b>689.292</b>    | <b>657.724</b>  |         |       |
| Organic  | Food Waste                | 1689.460          | 1675.380        |         |       |
|  | Garden/Food Mx            | 3322.300          | 2345.570        |         |       |
|  | Leaf Sweeping             | 535.480           | 926.020         |         |       |
|  | Third Parties             | 43.460            | 36.145          |         |       |
|  | <b>Recycling Centres</b>  | <b>1870.260</b>   | <b>2315.170</b> |         |       |
| <b>Sub total</b>   | <b>7460.960</b>           | <b>7298.285</b>   |                 |         |       |
| Other  | Bring Bank                | 18.212            | 15.322          |         |       |
|  | Kerbside                  | 203.480           | 149.654         |         |       |
|  | Third Parties             | 16.312            | 16.517          |         |       |
|  | Recycling Centres         | 2087.933          | 1495.609        |         |       |
|  | <b>Sub total</b>          | <b>2325.937</b>   | <b>1677.102</b> |         |       |
| Reuse  | Bring Bank                | 0.000             | 0.000           |         |       |
|  | Kerbside                  | 0.000             | 0.000           |         |       |
|  | Third Parties             | 102.675           | 97.632          |         |       |
|  | Recycling Centres         | 27.222            | 23.993          |         |       |
|  | <b>Sub total</b>          | <b>129.897</b>    | <b>121.625</b>  |         |       |
| SUB TOTALS   | Bring Bank                | 422.413           | 387.577         |         |       |
|  | Kerbside (Dry)            | 4088.992          | 3749.264        |         |       |
|  | Third Parties             | 171.065           | 161.200         |         |       |
|  | Organic (WCA)             | 5547.240          | 4946.970        |         |       |
|  | <b>TOTAL WCA</b>          | <b>10229.710</b>  | <b>9245.011</b> |         |       |
| <b>TOTAL WDA (Recycling Centres)</b>   | <b>5333.871</b>           | <b>5166.987</b>   |                 |         |       |
| <b>TOTAL RECYCLED (Household)</b>  | <b>15563.581</b>          | <b>14411.998</b>  |                 |         |       |
| <b>RECYCLED (Non Household Waste)</b>  |                           |                   | 2016/17         | 2017/18 |       |
| WCA  | TRADE                     | 0.000             | 0.000           |         |       |
|  | Fly Tipped                | 2.329             | 0.820           |         |       |
|  | Other                     | 0.000             | 0.000           |         |       |
|  | <b>TOTAL WCA</b>          | <b>2.329</b>      | <b>0.820</b>    |         |       |
| WDA  | TRADE (Green)             | 1.200             | 0.000           |         |       |
|  | TRADE (Card)              | 11.000            | 10.000          |         |       |
|  | Soil & Rubble             | 190.240           | 211.960         |         |       |
|  | Plasterboard              | 41.620            | 53.260          |         |       |
|  | Other                     | 0.000             | 0.000           |         |       |
| <b>TOTAL WDA</b>   | <b>244.060</b>            | <b>275.220</b>    |                 |         |       |
| <b>TOTAL RECYCLED (Non Household)</b>  | <b>246.389</b>            | <b>276.040</b>    |                 |         |       |
| <b>NON RECYCLED (Household Waste)</b>  |                           |                   | 2016/17         | 2017/18 |       |
| Dustbin  |                           | 8597.920          | 8672.620        |         |       |
|  | MRF (Reject)              | 0.000             | 0.000           |         |       |
|  | Bulky Collection          | 69.900            | 48.400          |         |       |
|  | Healthcare                | 42.992            | 45.689          |         |       |
|  | Street Cleansing          | 70.800            | 35.240          |         |       |
|  | IVC (Reject)              | 0.000             | 0.000           |         |       |
|  | Other                     | 0.000             | 0.000           |         |       |
|  | <b>TOTAL WCA</b>          | <b>8781.612</b>   | <b>8801.949</b> |         |       |
|  | Recycling Centres - Other | 11.600            | 13.729          |         |       |
|  | Recycling Centres - ERF   | 1384.960          | 1930.565        |         |       |
| <b>TOTAL WDA</b>   | <b>1396.560</b>           | <b>1944.294</b>   |                 |         |       |
| <b>TOTAL NON RECYCLED (WCA+WDA)</b>  | <b>10178.172</b>          | <b>10746.243</b>  |                 |         |       |
| <b>NON RECYCLED (Non Household Waste)</b>  |                           |                   | 2016/17         | 2017/18 |       |
| TRADE - Commercial & Industrial  |                           | 0.000             | 0.000           |         |       |
| TRADE - Construction & Demolition  |                           | 0.000             | 0.000           |         |       |
| <b>TOTAL WCA - TRADE</b>   | <b>0.000</b>              | <b>0.000</b>      |                 |         |       |
| Fly Tipped   |                           | 13.220            | 6.900           |         |       |
| Other (Non Household)  |                           | 0.000             | 0.000           |         |       |
| <b>TOTAL WCA - OTHER</b>   | <b>13.220</b>             | <b>6.900</b>      |                 |         |       |
| Recycling Centre (WDA)   |                           | 0.000             | 0.000           |         |       |
| <b>TOTAL NON RECYCLED (WCA+WDA)</b>  | <b>13.220</b>             | <b>6.900</b>      |                 |         |       |
| <b>SUMMARY (Household Waste)</b>   |                           |                   | 2016/17         | 2017/18 |       |
| RECYCLED (Incl. Reuse)   |                           | 4,639.010         | 4,261.896       |         |       |
| COMPOSTED  |                           | 5,590.700         | 4,983.115       |         |       |
| <b>TOTAL (REC &amp; COMP) (WCA)</b>  | <b>10,229.710</b>         | <b>9,245.011</b>  |                 |         |       |
| ENERGY RECOVERY (ERF)  |                           | 8,781.612         | 8,801.949       |         |       |
| OTHER (LANDFILL)   |                           | 0.000             | 0.000           |         |       |
| <b>TOTAL (NON-RECYCLED) (WCA)</b>  | <b>8,781.612</b>          | <b>8,801.949</b>  |                 |         |       |
| <b>TOTAL (Household Waste) (WCA)</b>   | <b>19,011.322</b>         | <b>18,046.960</b> |                 |         |       |
| <b>SUMMARY (Non Household Waste)</b>   |                           |                   | 2016/17         | 2017/18 |       |
| RECYCLED (Incl. REUSE)   |                           | 2.329             | 0.820           |         |       |
| COMPOSTED  |                           | 0.000             | 0.000           |         |       |
| <b>TOTAL (REC &amp; COMP) (WCA)</b>  | <b>2.329</b>              | <b>0.820</b>      |                 |         |       |
| ENERGY FROM WASTE (ERF)  |                           | 13.220            | 6.900           |         |       |
| OTHER (LANDFILL)   |                           | 0.000             | 0.000           |         |       |
| <b>TOTAL (NON-RECYCLED) (WCA)</b>  | <b>13.220</b>             | <b>6.900</b>      |                 |         |       |
| <b>TOTAL (Non Household Waste) (WCA)</b>   | <b>15.549</b>             | <b>7.720</b>      |                 |         |       |
| <b>SUMMARY (LACW)</b>  |                           |                   | 2016/17         | 2017/18 |       |
| LACW (REC & COMP)  |                           | 10,232.039        | 9,245.831       |         |       |
| LACW (NON RECYCLED)  |                           | 8,794.832         | 8,808.849       |         |       |
| <b>TOTAL LACW (WCA)</b>  | <b>19,026.871</b>         | <b>18,054.680</b> |                 |         |       |
| <b>PERFORMANCE INDICATORS</b>  |                           |                   | 2016/17         | 2017/18 |       |
| <b>NI192 (Recycling Rate %)</b>  |                           | <b>53.8%</b>      | <b>51.2%</b>    |         |       |
| BVPI 84a (kgs waste per head)  |                           | 346.4             | 324.4           |         |       |
| NI191 (kgs residual per household)   |                           | 347               | 345             |         |       |
| NI193 (% MSW (LACW) landfilled)*   |                           | 0.0%              | 0.0%            |         |       |
| <i>*Indicative. WDA/UA indicator only.</i>   |                           |                   |                 |         |       |
| Recycling Rate (H/H) (WCA + WDA)   |                           | 60.5%             | 57.3%           |         |       |
| Recycling Rate (HWRC) (WDA)  |                           | 80.0%             | 73.7%           |         |       |
| <i>NOTE: Recycling Centres includes non household</i>  |                           |                   |                 |         |       |
| <b>WASTE GROWTH</b>  |                           |                   | 2016/17         | 2017/18 |       |
| TOTAL HOUSEHOLD (WCA)  |                           | -0.4%             | -5.1%           |         |       |
| TOTAL HOUSEHOLD (WDA)  |                           | -2.0%             | 5.7%            |         |       |
| <b>TOTAL HOUSEHOLD (WCA+WDA)</b>   | <b>-0.8%</b>              | <b>-2.3%</b>      |                 |         |       |
| <b>POPULATION</b>  |                           |                   | 54,582          | 55,329  |       |
| <b>DWELLING STOCK</b>  |                           |                   | 25,330          | 25,480  |       |
| <i>LACW - Local Authority Collected Waste (Household + Non Household)</i>  |                           |                   |                 |         |       |
| <i>ERF: Input - Includes IBA (recovered) and Healthcare Wastes.</i>  |                           |                   |                 |         |       |

| TORBAY   |   | 2017/18           |                   | Status: | FINAL |
|--|---|-------------------|-------------------|---------|-------|
| <i>Data Source: Statistics Payments and Recharges (SPR). National Statistics available from WasteDataFlow: www.wastedataflow.org</i> |   |                   |                   |         |       |
| <b>RECYCLED (Household Waste)</b>  |   |                   | 2016/17           | 2017/18 |       |
| Glass  | Bring Bank  | 336.300           | 331.800           |         |       |
|  | Kerbside  | 3337.620          | 3450.800          |         |       |
|  | Third Parties   | 0.000             | 0.000             |         |       |
|  | Recycling Centres                                     | 0.000             | 0.000             |         |       |
|  | <b>Sub total</b>                                      | <b>3673.920</b>   | <b>3782.600</b>   |         |       |
| Paper & Card   | Bring Bank  | 121.500           | 108.160           |         |       |
|  | Kerbside  | 6264.230          | 6377.740          |         |       |
|  | Third Parties   | 44.070            | 13.440            |         |       |
|  | Recycling Centres                                     | 0.000             | 10.740            |         |       |
|  | <b>Sub total</b>                                      | <b>6429.800</b>   | <b>6510.080</b>   |         |       |
| Textiles   | Bring Bank  | 105.970           | 126.460           |         |       |
|  | Kerbside  | 59.760            | 81.280            |         |       |
|  | Third Parties   | 31.250            | 34.240            |         |       |
|  | Recycling Centres                                     | 3.660             | 3.000             |         |       |
|  | <b>Sub total</b>                                      | <b>200.640</b>    | <b>244.980</b>    |         |       |
| Plastic  | Bring Bank  | 0.000             | 0.000             |         |       |
|  | Kerbside  | 1135.200          | 1052.620          |         |       |
|  | Third Parties   | 0.000             | 0.000             |         |       |
|  | Recycling Centres                                     | 6.860             | 0.000             |         |       |
|  | <b>Sub total</b>                                      | <b>1142.060</b>   | <b>1052.620</b>   |         |       |
| WEEE   | Bring Bank  | 0.000             | 0.000             |         |       |
|  | Kerbside  | 0.000             | 0.000             |         |       |
|  | Third Parties   | 0.000             | 0.000             |         |       |
|  | Recycling Centres                                     | 906.400           | 795.840           |         |       |
|  | <b>Sub total</b>                                      | <b>906.400</b>    | <b>795.840</b>    |         |       |
| Organic  | Food Waste  | 2950.600          | 2825.740          |         |       |
|  | Garden/Food Mx  | 0.000             | 0.000             |         |       |
|  | Leaf Sweeping   | 0.000             | 0.000             |         |       |
|  | Third Parties   | 77.060            | 60.950            |         |       |
|  | Recycling Centres                                     | 5618.350          | 6220.580          |         |       |
|  | <b>Sub total</b>                                      | <b>8646.010</b>   | <b>9107.270</b>   |         |       |
| Other  | Bring Bank  | 0.000             | 0.000             |         |       |
|  | Kerbside  | 495.130           | 504.440           |         |       |
|  | Third Parties   | 0.000             | 0.000             |         |       |
|  | Recycling Centres                                     | 3201.980          | 3446.920          |         |       |
|  | <b>Sub total</b>                                      | <b>3697.110</b>   | <b>3951.360</b>   |         |       |
| Reuse  | Bring Bank  | 0.000             | 0.000             |         |       |
|  | Kerbside  | 0.000             | 0.000             |         |       |
|  | Third Parties   | 15.308            | 21.830            |         |       |
|  | Recycling Centres                                     | 0.000             | 0.000             |         |       |
|  | <b>Sub total</b>                                      | <b>15.308</b>     | <b>21.830</b>     |         |       |
| <b>SUB TOTALS</b>  | Bring Bank  | 563.770           | 566.420           |         |       |
|  | Kerbside (Dry)  | 11291.940         | 11466.880         |         |       |
|  | Third Parties   | 167.688           | 130.460           |         |       |
|  | Organic (WCA)   | 2950.600          | 2825.740          |         |       |
|  | <b>TOTAL (Collected)</b>                              | <b>14973.998</b>  | <b>14989.500</b>  |         |       |
|  | <b>TOTAL (Recycling Centres)</b>                      | <b>9737.250</b>   | <b>10477.080</b>  |         |       |
|  | <b>TOTAL RECYCLED (Household)</b>                     | <b>24711.248</b>  | <b>25466.580</b>  |         |       |
| <b>RECYCLED (Non Household Waste)</b>  |   |                   | 2016/17           | 2017/18 |       |
|  | TRADE (Green)   | 0.000             | 0.000             |         |       |
|  | TRADE (Recycling)                                     | 1480.270          | 1757.120          |         |       |
|  | Soil & Rubble   | 731.160           | 687.040           |         |       |
|  | Plasterboard  | 40.560            | 64.700            |         |       |
|  | Other   | 0.000             | 0.000             |         |       |
|  | <b>TOTAL</b>  | <b>2251.990</b>   | <b>2508.860</b>   |         |       |
|  | <b>TOTAL RECYCLED (Non Household)</b>                 | <b>2251.990</b>   | <b>2508.860</b>   |         |       |
| <b>NON RECYCLED (Household Waste)</b>  |   |                   | 2016/17           | 2017/18 |       |
|  | Dustbin   | 27246.360         | 27367.760         |         |       |
|  | MRF (Reject)  | 13.740            | 36.850            |         |       |
|  | Bulky Collection                                      | 0.000             | 0.000             |         |       |
|  | Healthcare  | 3.140             | 4.620             |         |       |
|  | Street Cleansing                                      | 3033.040          | 2607.790          |         |       |
|  | IVC (Reject)  | 0.000             | 0.000             |         |       |
|  | Other   | 197.200           | 147.120           |         |       |
|  | <b>TOTAL (Collected)</b>                              | <b>30493.480</b>  | <b>30164.140</b>  |         |       |
|  | Recycling Centres - Other                             | 0.000             | 0.000             |         |       |
|  | Recycling Centres - ERF                               | 4334.180          | 4176.140          |         |       |
|  | <b>TOTAL (Recycling Centres)</b>                      | <b>4334.180</b>   | <b>4176.140</b>   |         |       |
|  | <b>TOTAL NON RECYCLED</b>                             | <b>34827.660</b>  | <b>34340.280</b>  |         |       |
| <b>NON RECYCLED (Non Household Waste)</b>  |   |                   | 2016/17           | 2017/18 |       |
|  | TRADE - Commercial & Industrial                       | 4869.910          | 4453.820          |         |       |
|  | TRADE - Construction & Demolition                     | 0.000             | 0.000             |         |       |
|  | <b>TOTAL - TRADE</b>                                  | <b>4869.910</b>   | <b>4453.820</b>   |         |       |
|  | Fly Tipped  | 119.400           | 329.770           |         |       |
|  | Other (Non Household)                                 | 371.620           | 137.640           |         |       |
|  | <b>TOTAL - OTHER</b>                                  | <b>491.020</b>    | <b>467.410</b>    |         |       |
|  | Recycling Centre                                      | 20.060            | 0.000             |         |       |
|  | <b>TOTAL NON RECYCLED</b>                             | <b>5380.990</b>   | <b>4921.230</b>   |         |       |
| <b>SUMMARY (Household Waste)</b>   |   |                   | 2016/17           | 2017/18 |       |
|  | RECYCLED (Incl. Reuse)                                | 16,065.238        | 16,359.310        |         |       |
|  | COMPOSTED   | 8,646.010         | 9,107.270         |         |       |
|  | <b>TOTAL (REC &amp; COMP)</b>                         | <b>24,711.248</b> | <b>25,466.580</b> |         |       |
|  | ENERGY RECOVERY (ERF)                                 | 34,793.860        | 34,303.430        |         |       |
|  | OTHER (LANDFILL)                                      | 33.800            | 36.850            |         |       |
|  | <b>TOTAL (NON-RECYCLED)</b>                           | <b>34,827.660</b> | <b>34,340.280</b> |         |       |
|  | <b>TOTAL (Household Waste)</b>                        | <b>59,538.908</b> | <b>59,806.860</b> |         |       |
| <b>SUMMARY (Non Household Waste)</b>   |   |                   | 2016/17           | 2017/18 |       |
|  | RECYCLED (Incl. REUSE)                                | 2,251.990         | 2,508.860         |         |       |
|  | COMPOSTED   | 0.000             | 0.000             |         |       |
|  | <b>TOTAL (REC &amp; COMP)</b>                         | <b>2,251.990</b>  | <b>2,508.860</b>  |         |       |
|  | ENERGY FROM WASTE (ERF)                               | 5,054.930         | 4,921.230         |         |       |
|  | OTHER (LANDFILL)                                      | 326.06            | 0.00              |         |       |
|  | <b>TOTAL (NON-RECYCLED)</b>                           | <b>5,380.990</b>  | <b>4,921.230</b>  |         |       |
|  | <b>TOTAL (Non Household Waste)</b>                    | <b>7,632.980</b>  | <b>7,430.090</b>  |         |       |
| <b>SUMMARY (LACW)</b>  |   |                   | 2016/17           | 2017/18 |       |
|  | LACW (REC & COMP)                                     | 26,963.238        | 27,975.440        |         |       |
|  | LACW (NON RECYCLED)                                   | 40,208.650        | 39,261.510        |         |       |
|  | <b>TOTAL LACW</b>                                     | <b>67,171.888</b> | <b>67,236.950</b> |         |       |
| <b>PERFORMANCE INDICATORS</b>  |   |                   | 2016/17           | 2017/18 |       |
|  | <b>NI192 (Recycling Rate %)</b>                       | <b>41.5%</b>      | <b>42.6%</b>      |         |       |
|  | BVPI 84a (kgs waste per head)                         | 446.3             | 446.5             |         |       |
|  | NI191 (kgs residual per household)                    | 525               | 513               |         |       |
|  | NI193 (% MSW (LACW) landfilled)                       | 0.5%              | 0.1%              |         |       |
|  | <i>*Indicative</i>                                    |                   |                   |         |       |
|  | Recycling Rate (HWRC)                                 | 69.1%             | 71.5%             |         |       |
|  | <i>NOTE: Recycling Centres includes non household</i> |                   |                   |         |       |
| <b>WASTE GROWTH</b>  |   |                   | 2016/17           | 2017/18 |       |
|  | <b>TOTAL HOUSEHOLD</b>                                | <b>0.2%</b>       | <b>0.5%</b>       |         |       |
|  | <b>TOTAL LACW</b>                                     | <b>-0.6%</b>      | <b>0.1%</b>       |         |       |
| <b>POPULATION</b>  |   |                   | 133,373           | 133,883 |       |
| <b>DWELLING STOCK</b>  |   |                   | 66,350            | 67,000  |       |
| <i>LACW - Local Authority Collected Waste (Household + Non Household)</i>  |   |                   |                   |         |       |
| <i>ERF: Input - Includes IBA (recovered) and Healthcare Wastes.</i>  |   |                   |                   |         |       |